

NARM Quarterly

North American Reciprocal
Museum (NARM) Association®



SPRING 1898

JOHN A. SALZER SEED CO.
LA CROSSE WIS.

FLOWERS OF PARADISE.
Imagination paints for us the Garden of Eden—Paradise—as a veritable bower of flowers and blossoms, of ferns and vines, of fragrant masses of blooming glories. We have endeavored to reproduce them in our "FLOWERS OF PARADISE".
Drawn from every nation, every country and clime, in endless sorts and countless varieties and numberless shapes, forms, sizes and colors.
A package of above Flowers of Paradise is given free of all cost with each order for 40 cents or more, from this catalogue. See also further description inside of front cover. Price per pkg. 25 cents, 3 pkgs. 50 cents.



Dreer's 'Gold Medal' Collection of Old Fashioned Hardy Flowers, Dreer's Garden Calendar 1902. Henry A. Dreer, Chestnut Street, Philadelphia. Courtesy of the U.S. Department of Agriculture, National Agricultural Library archive.org

This Spring issue of the NARM Quarterly features floral artwork from the late 1800's and early 1900's. While on the hunt for flowers to showcase on the cover we were surprised to discover the hidden treasures in the U.S. Department of Agriculture and Smithsonian online archives. Pages and pages of beautifully designed floral and vegetable scenes were created in the late nineteenth and early twentieth centuries by countless unsung artists for mail order seed and garden calendars, catalogs and packages. In the words of the Smithsonian archives:

"The real gems of the collection date from 1830 to the 1930's and are both beautiful and important publications that document the history of the seed and agricultural implement business and provide insight into the history of botany and plant research in the United States, through the introduction of plant varieties. Seed trade catalogs are also a window into the evolution of graphic arts in advertising and the changing fashions in flowers and vegetables."

Not only a wealth of visual delights, but historically significant and easily accessible to anyone, these beautiful plates also represent the treasures available in each of our NARM member institutions. NARM reciprocal benefits are a passport to discovery with countless exhibitions available across North America! We hope that when you prepare for spring break and summer vacations you will take some time to visit our participating institutions and discover some treasures of your own on your travels!

Virginia Phillippi
Executive Director

View the Smithsonian image library collection of seed and nursery catalogs at library.si.edu/image-gallery

View more Dreer's calendars and catalogs at archive.org

Front and back cover: Salzer John A., Seed Co. 1896. Catalogue of Plants and Seeds no. Spring 1896 (Damaged), Spring 1897, Spring 1898, Spring 1899, La Crosse WI. Courtesy of the Smithsonian Libraries library.si.edu

Contents

Meet our Newest Members.....4

Et cetera...

New and rejoining members....14

Other updates.....16

Exhibitions for rent.....20

MEET OUR NEWES

Saint Mary's College Museum of Art (SMC|MoA)



Moraga, California
925-631-4379
www.stmarys-ca.edu/museum

Saint Mary's College Museum of Art (SMC|MoA) is a landmark for art in Northern California, with a permanent collection of over 5,000 pieces. Inspired by its founder Brother Cornelius Braeg, MoA cares for the largest William Keith collection in the nation. The Museum provides educational and programming opportunities for Saint Mary's College of California students and the surrounding community. It is open Wed through Sun 10 am to 4 pm and (10 am to 9 pm) every third Thursday of the month.

Colorado Snowsports Museum and Hall of Fame

Vail, Colorado
970-476-1876
Snowsportsmuseum.org

The Colorado Snowsports Museum and Hall of Fame tells the stories of how skiing and snowboarding were introduced to Colorado and how they evolved. The Museum uses the latest in technology for in depth exploration of the resorts, competitors and individuals who have contributed significantly to the evolution of the snow sports in Colorado.



Milton, Georgia
678-458-4208
miltongahistoricalsociety.com

Milton Historical Society

Telling the rich but little-known history of the new City of Milton and surrounding area.

Evansville Wartime Museum



Evansville, Indiana
812-424-7461
evansvillewartimemuseum.org

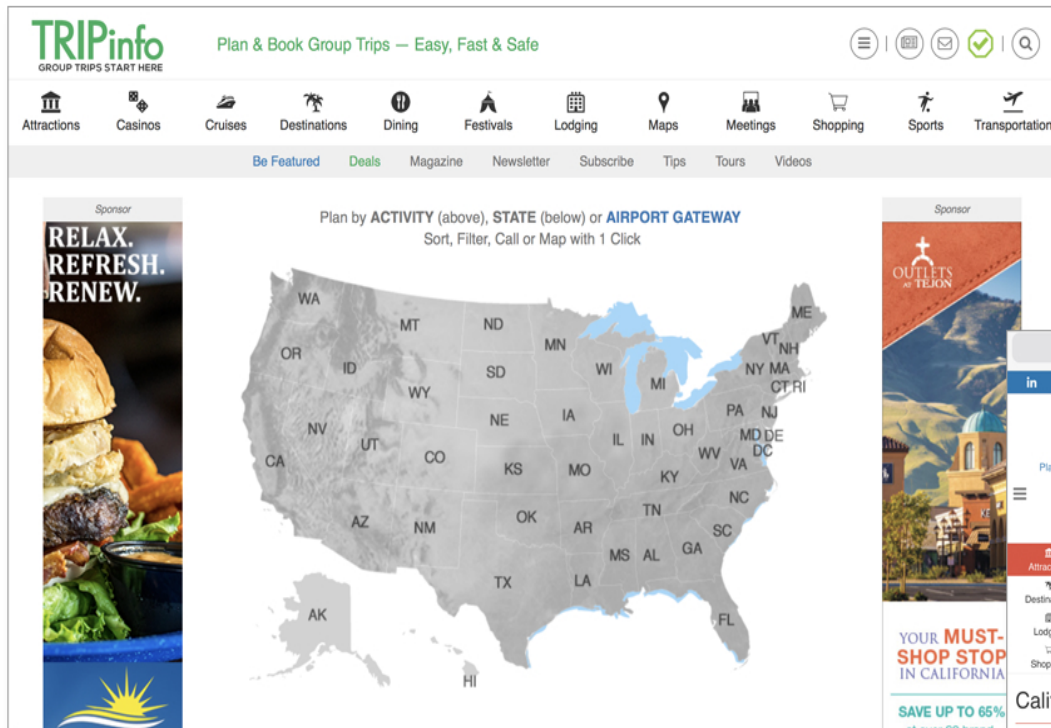
Evansville Wartime Museum is the place to visit for the surprising, interesting and world-changing story of one region's involvement in winning WWII. The stories we tell come from home front workers and battlefield warriors — the people who were there. Evansville was a center of WWII production, from making P-47 fighter planes and LSTs to billions of bullets. These and hundreds of other products helped the Allies fight the war on land, on sea and in the air. Beyond wartime goods, men and women of the armed forces from this region shipped out to the world's far-flung battle fronts. We share their stories.

T NARM MEMBERS

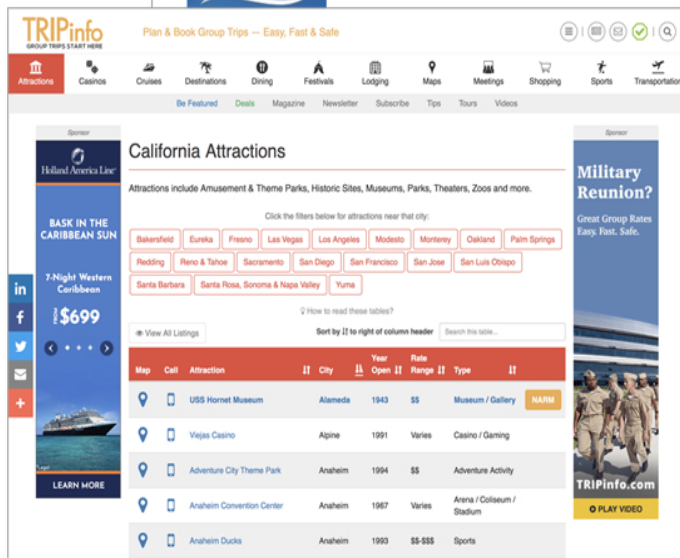


Spring Break!

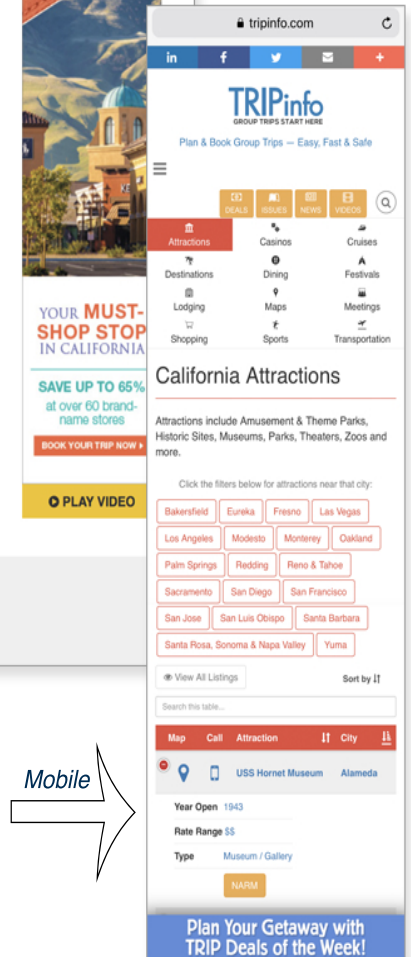
TRIPinfo Is Travel Planning Made Easy!



REUNIONS



Desktop



Mobile

- Book your flight/rent a car from the Transportation pages
- Plan and book your lodging from the Lodging pages
- Plan your tours and museum visits from the Attraction pages
- Plan your dining, shopping, festivals and more
- 1-Touch dialing to call the museum or attraction
- 1-Touch to Map and find directions to the museum or attraction

TRIPinfo.com shows you which cultural institutions are members of NARM.

All on one, easy to use, safe travel planning site!

Summer Getaways

Team Meetings

TRIPinfo
GROUP TRIPS START HERE



Maritime and Seafood Industry Museum

Biloxi, Mississippi
228-435-6320
maritimemuseum.org

The Maritime and Seafood Industry Museum was established in 1986 to preserve and interpret the maritime history and heritage of Biloxi and the Mississippi Gulf Coast. It accomplishes this mission through an array of exhibits on shrimping, oystering, recreational fishing, wetlands, managing marine resources,

charter boats, marine blacksmithing, wooden boat building, netmaking, catboats/Biloxi skiff, a shrimp peeling machine and numerous historic photographs and objects.

Frank Lloyd Wright's Graycliff

Derby, New York
716-947-9217
experiencegraycliff.org

Graycliff stands majestically on the shore of Lake Erie as a monument to one of the greatest American tales ever told. More than a home, Graycliff is one of Frank Lloyd Wright's most stunning examples of organic architecture, and to visitors, an unexpected departure from his signature Prairie style.

Today, the Graycliff Conservancy is dedicated to restoring Graycliff to its former glory, preserving its legacy for future generations.



A spirited extension of Buffalo's rebirth, you are invited to experience this unforgettable setting where a family's resolve was tested, and one man's struggle turned into triumph.

The Holocaust Memorial and Tolerance Center of Nassau County



Glen Cove, New York
516-571-8040
www.hmtcli.org

The Mission of the Holocaust Memorial and Tolerance Center of Nassau County is to teach the history of the Holocaust and its lessons through education and community outreach. We teach about the dangers of anti-semitism, racism, bullying and all other manifestations of intolerance. We promote resistance to prejudice and advocate respect for every human being.



The Drawing Center

New York, New York
212-219-2166
www.drawingcenter.org

The Drawing Center, a museum in Manhattan's SoHo district, explores the medium of drawing as primary, dynamic, and relevant to contemporary culture, the future of art, and creative thought. Its activities, which are both multidisciplinary and broadly historical, include exhibitions; Open Sessions, a curated artist program encouraging community and collaboration; the Drawing Papers publication series; and education and public programs. It was founded in 1977 by curator Martha Beck (1938–2014).

Photo: Paul Warchol, courtesy of WXY architecture.

Woodstock Artists Association and Museum

Woodstock, New York
845-679-2940
www.woodstockart.org

Since its founding in 1919, the Woodstock Artists Association & Museum (WAAM) has been committed to exhibiting, collecting and supporting artists of the Mid-Hudson region and sustaining the tradition of Woodstock as a "Colony of the Arts." Located in the center of the village of Woodstock, New York, the WAAM functions as a cultural center as well as a repository for the work of American artists associated with the Woodstock art colony.



Southeastern Narrow Gauge & Shortline Museum



Newton, North Carolina
980-858-4266
www.newtondepot.com

The Southeastern Narrow Gauge & Shortline Museum is a three part campus including the historic 1924 Newton Depot, a Model Railroad Center, and the Alexander Railroad Pavilion. The restored Depot features regional historic railroad artifacts. The Model Railroad center hosts 8 operating model layouts and a gift shop. The Alexander Pavilion houses full size railcars restored by the Alexander Chapter of the National Railway Historic Society.

Dunham Tavern Museum

Cleveland, Ohio
216-431-1060
dunhamtavern.org

Once a stagecoach stop on Buffalo-Cleveland-Detroit post road, today Dunham Tavern Museum is the oldest building still standing on its original site in the city of Cleveland. The 1824 home of Rufus and Jane Pratt Dunham in MidTown Cleveland is a designated Cleveland Landmark listed on the National Register of Historic Places. In stark contrast to the cityscape that surrounds it, the museum and its gardens offer a

glimpse of history and insight into the lifestyles of early Ohio settlers and travelers.



Museum of Contemporary Art moCa Cleveland



Cleveland, Ohio
216-421-8671
www.mocacleveland.org

The Museum of Contemporary Art is a unique and dynamic place for the visual art of our time. We challenge, inspire and teach a wide range of audiences. Our purpose is to push the boundaries of innovation, creativity and exploration through exhibitions, publications, education and outreach programs.

The Museum Broken Arrow

Broken Arrow, Oklahoma
918-258-2616
brokenarrowmuseum.org

Located in historic downtown Broken Arrow, near the site of the original train depot, The Museum Broken Arrow's mission is to be a place where our community comes together to explore Broken Arrow's past, appreciate its present, and imagine its future.

The Museum features exhibits, collections and photographs showcasing the rich history of Broken Arrow. The community's legacy lives on through interactive programming and events.



Tulsa Air and Space Museum & Planetarium



Tulsa, Oklahoma
918-834-9900
tulsamuseum.org

With a mission to preserve Oklahoma's aerospace history and to inspire science-based learning through discovery, the Tulsa Air and Space Museum & Planetarium (TASM) has carved out a unique niche in the Oklahoma museum community. TASM has been exposing visitors to real-world applications of STEM for over 15 years.

Albany Regional Museum

Albany, Oregon
541-967-7122
Armuseum.com

Changing exhibits & programs offer insight into the history & culture of the Albany, Oregon area.



Benton County Historical Society



Philomath, Oregon
541-929-6230
bentoncountymuseum.org

The Benton County Historical Society museums feature exhibitions of art and artifacts from the Society's vast 120,000 object-collection, which includes the former Horner museum collection from Oregon State University.

Benton County Historical Society operates two museums: Benton County Historical Society Museum and The Corvallis Museum.

National Liberty Museum

Philadelphia, Pennsylvania
215-925-2800
libertymuseum.org

The National Liberty Museum brings Liberty to life through stories of people whose character and courage have expanded liberty for all in order to educate and inspire visitors to think about liberty as an ongoing human quest.



Philadelphia Society for the Preservation of Landmarks Grumblethorpe Historic House and Garden



Philadelphia, Pennsylvania
215-843-4820
philalandmarks.org/grumblethorpe

The Philadelphia Society for the Preservation of Landmarks is an 87 year old non-profit that is dedicated to maintaining and preserving its four historic house museums.

Built in 1744, Grumblethorpe House and Gardens was the home to the Wister family, a prominent Quaker family in Philadelphia who dabbled in botany, science, astronomy and more.

Philadelphia Society for the Preservation of Landmarks Hill-Physick House

Philadelphia, Pennsylvania
215-925-7866
philalandmarks.org/physick-house

The Philadelphia Society for the Preservation of Landmarks is an 87 year old non-profit that is dedicated to maintaining and preserving its four historic house museums.

The Hill-Physick House, built in 1786 by Madeira wine importer Henry Hill, was home to the father of American surgery, Dr. Philip Syng Physick from 1815-1837.



Philadelphia Society for the Preservation of Landmarks Historic Waynesborough

Paoli, Pennsylvania
610-647-1779
philalandmarks.org/historic-waynesborough-

The Philadelphia Society for the Preservation of Landmarks is an 87 year old non-profit that is dedicated to maintaining and preserving its four historic house museums.

Built in 1724, Historic Waynesborough was home to "Mad" Anthony Wayne, famous general of the Revolutionary War.



Philadelphia Society for the Preservation of Landmarks Powel House

Philadelphia, Pennsylvania
215-627-0364
philalandmarks.org/powel-house

The Philadelphia Society for the Preservation of Landmarks is an 87 year old non-profit that is dedicated to maintaining and preserving its four historic house museums.

The Powel House, built in 1765, was home to Samuel Powel who was the last mayor of colonial Philadelphia and first mayor of the city after the revolutionary war and his wife, Elizabeth Powel, confidant of General Washington.



Cuero Heritage Museum

Cuero, Texas
361-485-8090
cueroheritagemuseum.org

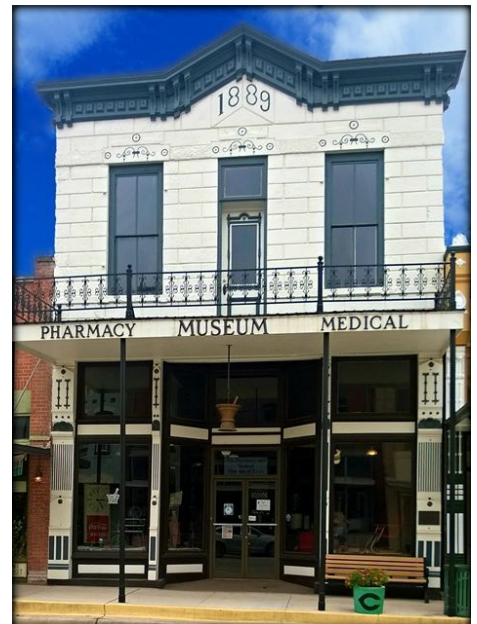
The Cuero Heritage Museum, located in the Cuero Federal Building, was the former Post Office built in 1915. The Museum offers many wonders and is dedicated to celebrating the people of Cuero and their unique heritage. Visit the permanent and rotating exhibits to visually explore the history of this quaint, yet fascinating town. Permanent exhibits include the Turkey Trot, Gobbler Football, WWII in Cuero, Coca Cola, world-renowned artist Martha Sawyers, and nearly 2,600 juice reamers!



Pharmacy & Medical Museum of Texas

Cuero, Texas
361-485-8090
pharmacyandmedicalmuseum.org

Built in 1889 by the Heaton Brothers, the Pharmacy & Medical Museum of Texas was designed to be a pharmacy/drugstore and never housed a different type of business until it became a museum. The interior is amazingly intact with the original 1889 wall cabinets, display counters and the pharmacist's preparation bench in their original locations. The first floor has been beautifully restored and houses displays of items from the late 1800's through the early 1900's. Walking through the various displays, one quickly realizes that early pharmacy/drugstores sold just about everything, not just medicines and medical equipment.



El Paso Museum of History



El Paso, Texas
915-212-0320
history.elpasotexas.gov

The El Paso Museum of History exists for the educational benefit of the community and visitors. It promotes the understanding and significance of the rich, multicultural and multinational history of the border region known as, The Pass of the North. Through exhibits and programs, the museum involves diverse audiences in exploring varieties of human experience and encourages individuals to explore the past and reflect on their own place in history.

Galveston Railroad Museum

Galveston, Texas
409-765-5700
galvestonrrmuseum.org

The Galveston Railroad Museum is a living history museum dedicated to the preservation and understanding of the role that railroads played in the development of transportation and commerce in our region. Through exhibitions of static and rolling stock and educational programs, the museum excites imagination and thoughtful reflection on invention, history, and our future.



The Heritage Society

Houston, Texas
713-655-1912
heritagesociety.org

The Heritage Society maintains ten historic structures, houses dating from 1823 to 1905 with guided tours and educational programs designed to promote awareness of Houston's diverse history. "Founded in 1954 by a number of public-spirited Houstonians to rescue the 1847 Kellum-Noble House from demolition, The Heritage Society has since saved an additional nine historic buildings, moved them from various locations to join the Kellum-Noble House in Sam Houston Park, and restored them to reflect their respective eras. These ten buildings, along with the Museum Gallery, serve as historic reference points and exhibition spaces for more than 23,000 artifacts that document life in Houston from the early 1800s to the mid-1900s.

Nora Eccles Harrison Museum of Art (NEHMA)

Logan, Utah
435-797-0163
artmuseum.usu.edu

The Nora Eccles Harrison Museum of Art (NEHMA) is dedicated to collecting, preserving, and exhibiting modern and contemporary visual art, with a collection focused on artists from western America.



Cowlitz County Historical Museum



Kelso, Washington
360-577-3119
co.cowlitz.wa.us/museum

The Cowlitz County Historical Museum collects, preserves, and interprets information and artifacts that tell the story of Cowlitz County and the Lower Columbia Region. Exhibits feature Native American culture, pioneer culture, wood products, riverine maritime and other local industries.

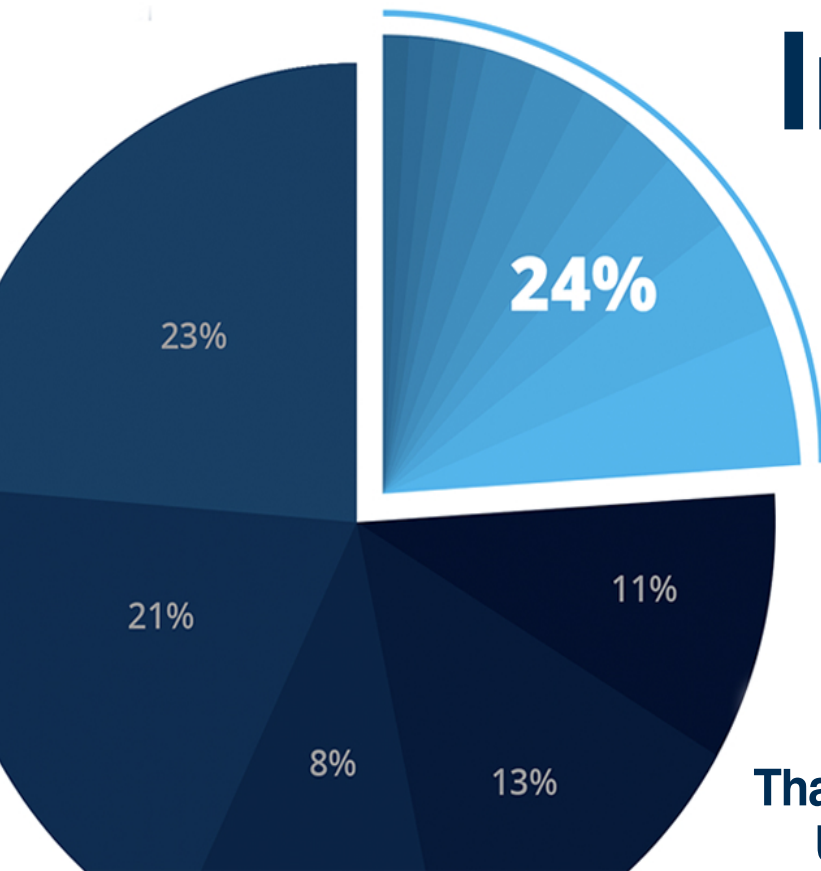
Influence...

The Influencers Where They Plan

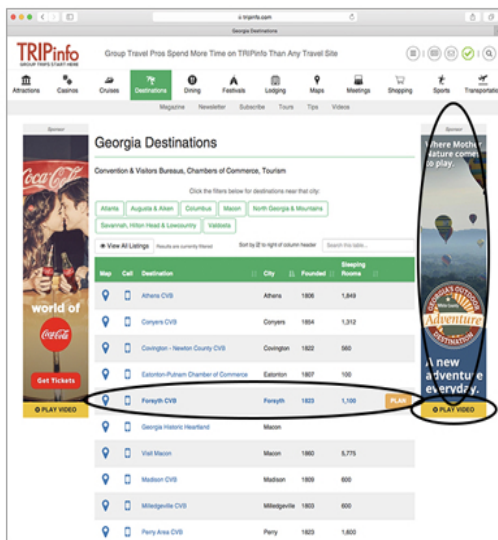
Group Planners Spend More Money Than All Other Leisure Travel Segments

They Need Travel Options, Logistics & Details...
Easy, Fast and Safe

That's Why 45,000+ Group Planners Use TRIPinfo.com Each Month



REACH THEM ON THESE 3 DIGITAL PLATFORMS AT A GREAT VALUE

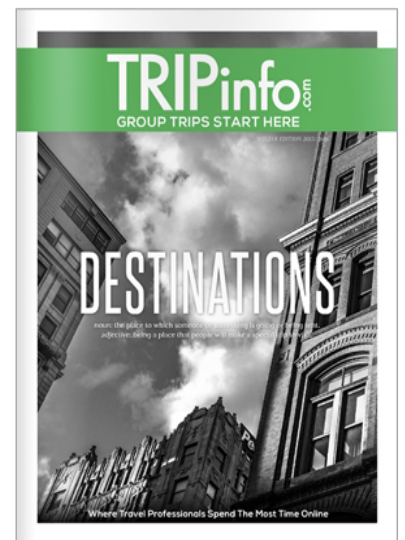


24/7/365

Online Display & Mobile Ads,
Featured Text Ads, Videos



Weekly Newsletter Features



Quarterly Digital Magazine

Start Today to Get ROI Reports:

1. \$ 45 / month to enroll a Featured Text Ad and "BOOK" button
2. \$ 125 / month to receive a Featured Text Ad and a Featured Video Package
3. \$ 350 / month to receive all of the above plus 1 of 2 Fixed Display Ads on a page



TRIPinfo
GROUP TRIPS START HERE

Tel: 770.825.0220

www.TRIPinfo.com

New and rejoining members 12 15 2018 - 3 14 2019

CALIFORNIA, Moraga, Saint Mary's College Museum of Art, 925-631-4379

COLORADO, Vail, Colorado Snowsports Museum and Hall of Fame, 970-476-1876

GEORGIA, Atlanta, The Museum of Contemporary Art of Georgia, 404-367-8700

GEORGIA, Milton, Milton Historical Society, 678-458-4208

ILLINOIS, Chicago, DuSable Museum of African American History, 773-947-0600

ILLINOIS, Evanston, Mary and Leigh Block Museum of Art at Northwestern University, 847-491-4001

INDIANA, Evansville, Evansville Wartime Museum, 812-424-7461

MASSACHUSETTS, Framingham, Danforth Art Museum at Framingham State University, 508-215-5110

MISSISSIPPI, Biloxi, Maritime and Seafood Industry Museum, 435-6320

NEW YORK, Derry, Frank Lloyd Wright's Graycliff, 716-947-9217

NEW YORK, Glen Cove, The Holocaust Memorial and Tolerance Center of Nassau County, 516-571-8040

NEW YORK, New York, The Drawing Center, 212-219-2166

NEW YORK, Woodstock, Woodstock Artists Association and Museum, 845-679-2940

NORTH CAROLINA, Newton, Southeastern Narrow Gauge & Shortline Museum, 980-858-4266

NORTH CAROLINA, Raleigh, CAM Raleigh, 919-261-5917

OHIO, Cincinnati, National Underground Railroad Freedom Center, 513-333-7739

OHIO, Cleveland, Dunham Tavern Museum, 216-431-1060

OHIO, Cleveland, Museum of Contemporary Art moCa Cleveland, 216-421-8671

OKLAHOMA, Broken Arrow, The Museum Broken Arrow, 918-258-2616

OKLAHOMA, Tulsa, Tulsa Air and Space Museum & Planetarium, 918-834-9900

OREGON, Albany, Albany Regional Museum, 541-967-7122

OREGON, Philomath, Benton County Historical Society, 541-929-6230

PENNSYLVANIA, Philadelphia, National Liberty Museum, 215-925-2800

PENNSYLVANIA, Philadelphia, Philadelphia Society for the Preservation of Landmarks/
Grumblethorpe Historic House and Garden, 215-843-4820

PENNSYLVANIA, Philadelphia, Philadelphia Society for the Preservation of Landmarks/Hill-
Physick House, 215-925-7866

PENNSYLVANIA, Philadelphia, Philadelphia Society for the Preservation of Landmarks/
Historic Waynesborough, 610-647-1779

PENNSYLVANIA, Philadelphia, Philadelphia Society for the Preservation of Landmarks/
Powel House, 215-627-0364

TEXAS, Cuero, Cuero Heritage Museum, 361-485-8090

TEXAS, Cuero, Pharmacy & Medical Museum of Texas, 361-485-8090

TEXAS, El Paso, El Paso Museum of History, 915-212-0320

TEXAS, Galveston, Galveston Railroad Museum, 409-765-5700

TEXAS, Houston, The Heritage Society, 713-655-1912

TEXAS, Lubbock, LHUCA , 806-762-8606

UTAH, Logan, Nora Eccles Harrison Museum of Art (NEHMA), 435-797-0163

WASHINGTON, Kelso, Cowlitz County Historical Museum, 360-577-3119

ET CETERA (CONTINUED)...

Other updates

CANADA, ON, Owen Sound, Tom Thomson Art Gallery, Remove: Not renewing this year

CANADA, PE, Charlottetown, Confederation Centre of the Arts, Remove: Not renewing this year

CALIFORNIA, Los Angeles, Craft & Folk Art Museum, Name change: Craft Contemporary

CALIFORNIA, Roseville, Maidu Museum & Historic Site, Remove: Lost Contact

CALIFORNIA, Sacramento, California State Railroad Museum, New website address: californiarailroad.museum

CALIFORNIA, San Diego, Junipero Serra Museum, Remove: Lost Contact

CALIFORNIA, Santa Rosa, Pacific Coast Air Museum, Remove: Not renewing this year

CALIFORNIA, Vallejo, Georgia Galleria Inc., Remove: Not renewing this year

INDIANA, Lafayette, Haan Mansion Museum of Indiana Art, Name change: Haan Museum of Indiana Art

MISSOURI, Saint Louis, World Chess Hall of Fame, Remove: Lost Contact

NEVADA, Las Vegas, The Neon Museum, Add restriction *NARM privileges may be restricted for concerts/lectures/special exhibitions and ticketed events.

NEVADA, Reno, University Galleries, Name change: The John & Geraldine Lilley Museum of Art

PENNSYLVANIA, Philadelphia, The Philadelphia Art Alliance, Remove: Not renewing this year

PENNSYLVANIA, Philadelphia, Philadelphia History Museum at the Atwater Kent, Remove: Not renewing this year

TENNESSEE, Nashville, Frist Art Museum, New website address: fristartmuseum.org

TEXAS, Albany, Old Jail Art Center, New website: theojac.org

MOBILE ENGAGEMENT PLATFORM by



CUSEUM

Engage your visitors, members, and patrons through the power of mobile.

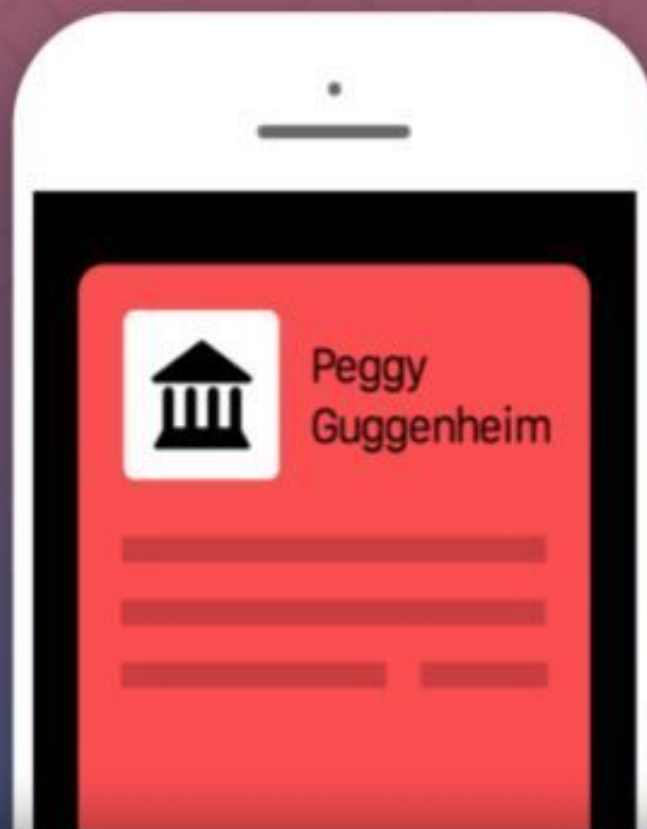
Cuseum is a platform that enables organizations to quickly, easily, and affordably power **mobile guide apps** to engage their visitors + deliver **digital membership cards** and campaigns to their members and patrons.



Drive more value



Increase renewals



Integrated



Save time & money

TRUSTED BY WORLD-CLASS CULTURAL ORGANIZATIONS



Interested in learning more?
We'd love to hear from you.

cuseum.com



Dan Sullivan

Head of Partnerships & Growth
dan@cuseum.com

Exhibitions for Rent

Paul Villinski: Farther



Paul Villinski, Burst, 2013, Vinyl LP records, wire, Installation and dimensions variable

A mid-career retrospective by New York-based sculptor Paul Villinski (American, born 1960). Villinski's sculptures and installations engage with subjects both sublime and neglected. Influenced by a lifelong concern for environmental issues, his work reinvisions seemingly useless and discarded materials, often trash found on the streets of New York City, into uplifting and humanizing works of art.

More information: <https://www.taubmanmuseum.org/calendar/10313/paul-villinski-farther>

Kids Design Glass

What started out as an educational project in the early 2000s has grown into a collection of art that pays tribute to children and their creativity.

Museum of Glass offers a variety of traveling exhibitions that highlight the diversity and excitement of the medium of glass.

Image: Duncan Noah (age 11), made by Museum of Glass Hot Shop Team; Green Guy, 2006. Blown and hot-sculpted glass with applied bits; 19 1/2 x 12 1/2 x 5 in. Collection of Museum of Glass, Tacoma, Washington, sponsored by Threshold Group. Photo by Russell Johnson and Jeff Curtis.



More information: <https://www.museumofglass.org/traveling-exhibitions>

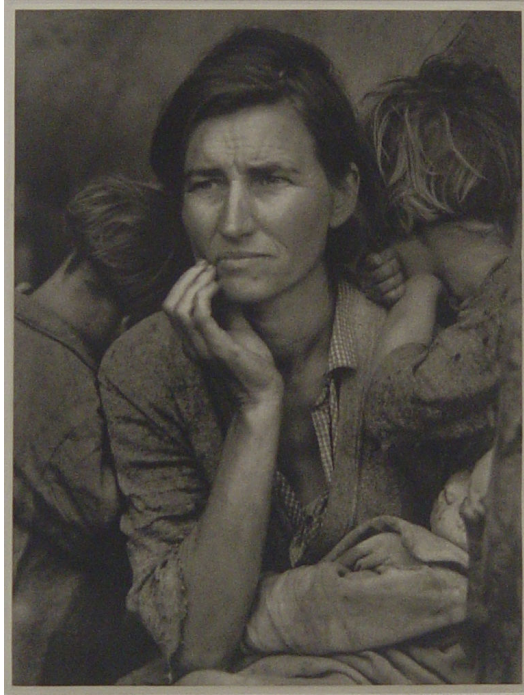


Image credits : Dorothea Lange, Migrant Mother, Nipomo, California, 1936, photogravure, Edition #36/300, Published by Aperture under the auspices of the Dorothea Lange Collection at the Oakland Museum.

Masters of American Photography

This exceptional exhibition features works from the Reading Public Museum's collection of photographs. The works elegantly represent the history of photography from the 1880s through the 1980s, with a particular emphasis on the first decades of the twentieth century. The exhibition includes iconic images by Eadweard Muybridge, Alfred Stieglitz, Ansel Adams, Walker Evans, Berenice Abbott, Edward Weston, Dorothea Lange, Margaret Bourke-White, Paul Strand, and others, exploring themes such as portraiture, landscape, still life, and the cultural history of America during the period.

More information: <https://www.readingpublicmuseum.org/touring-masters-of-american-photography>

Blacklist: The Hollywood Red Scare

In October 1947, the House Un-American Activities Committee (HUAC) called Hollywood figures to testify about allegations of communist propaganda in American films. Although the committee never found evidence of Communist propaganda, ten of the writers and directors called to testify were held in contempt of Congress, fined and sentenced to prison. Hollywood's power players responded to the proceedings by creating a self-imposed blacklist of those "Hollywood Ten" and others implicated in the proceedings.



More information: <https://jewishmuseummilwaukee.org/exhibits/traveling-exhibits/>

