

# NARM

*North American Reciprocal  
Museum (NARM) Association®*

---

# Quarterly

**Summer 2022**



KELLEY BOOZE  
PROJECT  
JERICHO





Kelley Booze, Hope Ahead (detail). Springfield, Ohio, 2021

Summer featured artist: Kelley Booze

Kelley Booze is inspired by observations and reflections about how we relate to our surroundings and the spaces we occupy. Her artworks are often influenced by industrial spaces and man-made places of utility that are now idle or dormant.

Fascinated by the adaptability and resilience of nature and its persistence in the human-altered urban landscape, Booze explores transitional, unused, and vacant spaces to provide a groundwork to examine perceptions of time, notions of memory, and the infrastructure of the natural world. There are often elements of commonly overlooked objects such as utility poles, fences and guardrails. Roads, sidewalks and power lines serve as a metaphor for the ever-present connections that are no longer utilized.

In addition to her studio practice, Booze teaches painting, drawing and other various classes and workshops. Her work is part of many private and public collections in the U. S., France, Germany, and Israel.

"Hope Ahead," the mural featured in this NARM Quarterly, was painted in May 2021 by Project Jericho youth under the guidance of Booze who was the lead artist and mural designer. Project Jericho provides in-depth visual and performing art experiences to youth and families in Clark County, Ohio.

The mural was created in partnership with Bike Greater Springfield and will be used not only as a wayfinding tool for those traveling along the bike path, but also as a symbol of the good that will come to Springfield after a year of isolation during the pandemic.

View Kelley's website here: [www.kelleybooze.com](http://www.kelleybooze.com)

(Cover and back page images: Kelley Booze, Hope Ahead. Springfield, Ohio, 2021)

# Contents

Meet our Newest Members.....4

Virtual Programming.....16

Et cetera...

New and rejoining members.....19

Other updates.....21



# MEET OUR NEWEST

## Isabel Anderson Comer Museum & Arts Center



Sylacauga, Alabama  
256-245-4016  
[comermuseum.weebly.com](http://comermuseum.weebly.com)

The mission of The Isabel Anderson Comer Museum and Arts Center is to promote the social, cultural, and historical arts in the community; to provide access to the arts and humanities by providing artistic expositions, displays, lectures, and cultural events through the involvement of civic, community, educational, and social organizations.

## Sharlot Hall Museum

Prescott, Arizona  
928-445-3122  
[www.sharlothallmuseum.org](http://www.sharlothallmuseum.org)

Sharlot Hall Museum is an educational and cultural center that fosters public and community understanding and appreciation of historical, social, cultural, and natural aspects of Arizona, with emphasis on the Central Highlands. We promote involvement in and support for research, collections, conservation, exhibits, and related programs.



## Shiloh Museum of Ozark History



Springdale, Arkansas  
479-750-8165  
[shilohmuseum.org](http://shilohmuseum.org)

A regional history museum focusing on the Northwest Arkansas Ozarks. The museum takes its name from the pioneer community of Shiloh, which became Springdale in the 1870s.

Most of what you'll see at the museum highlights the real shapers of Ozark history—the everyday men, women, and children who lived in our towns and rural communities. Along with exhibits, you can explore six historic buildings on the museum grounds. We also have a research library with a collection of over 500,000 photographs of Ozark life.



# T NARM MEMBERS





## Sunnyvale Heritage Park Museum



Sunnyvale, California  
408-749-0220  
[heritageparkmuseum.org](http://heritageparkmuseum.org)

Built in 2008, the Sunnyvale Heritage Park Museum welcomes visitors of all ages to explore Sunnyvale's history. From the Ohlone, to the valley of Heart's Delight, to today's Silicon Valley - the museum educates through story and hands-on experiences of the technology and people who have called Sunnyvale home.

## The Colorado Chautauqua

Boulder, Colorado  
303-442-3282  
[www.chautauqua.com](http://www.chautauqua.com)

The Colorado Chautauqua opened its doors in 1898 and is one of the few surviving campuses from the height of the Chautauqua movement of the late 19th and early 20th centuries. As a National Historic Landmark, the Colorado Chautauqua remains committed to its historic purpose, offering outstanding cultural and educational programs in our world-famous Chautauqua Auditorium and inviting Community house. Attracting more than a million visitors each year, the Colorado Chautauqua is nestled at the foot of the famous Flatirons mountains and sits just minutes from downtown Boulder and the University of Colorado.



## Poudre Landmarks Foundation



Fort Collins, Colorado  
970-221-0533  
[www.poudrelandmarks.org](http://www.poudrelandmarks.org)

The 1879 Avery House was originally owned by Franklin Avery who was a surveyor who helped design the street layout for Fort Collins. Built with locally-sourced sandstone, the original structure had just five rooms across two stories, but over the years the family expanded it several times. The Avery family occupied the home until 1962; it was then purchased by the City of Fort Collins in 1974 and was restored by the Poudre Landmarks Foundation, who oversees the historic site, and opened to the public in the early 1980's. Today, visitors can tour the home and explore its grounds. Among the items on display are historic costume collection pieces and period appropriate furniture.



# T N A R M M E M B E R S

## Dinosaur Ridge

Morrison, Colorado  
303-697-3466  
[dinoridge.org](http://dinoridge.org)

Dinosaur Ridge is the home of the world's first Stegosaurus discovery, with more than 250 amazing Cretaceous dinosaur tracks, dozens of Jurassic dinosaur bones, and many other trace fossils.

Our mission is that Dinosaur Ridge educates and inspires wonder in visitors of all backgrounds about the science and history of the fossils and natural resources found at Dinosaur Ridge, Triceratops Trail, and related paleontology sites. We practice responsible stewardship with a strong commitment and urgency to preserve the fossils and natural resources for future generations.

---

## Historic New England | Roseland Cottage

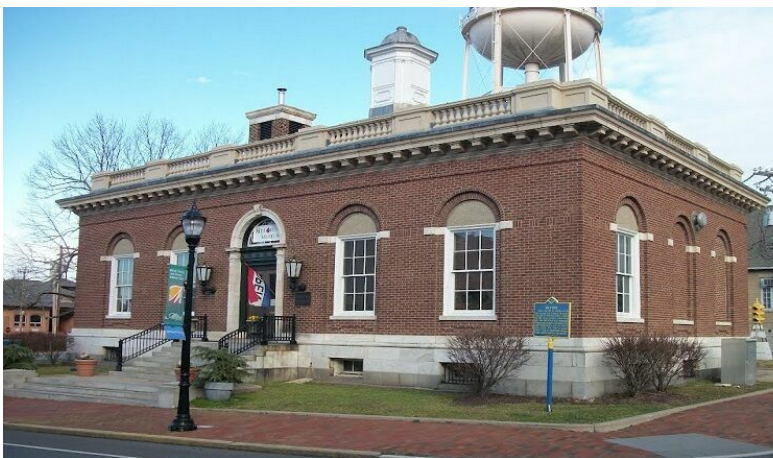
Woodstock, Connecticut  
860-928-4074  
[www.historicnewengland.org/property/roseland-cottage](http://www.historicnewengland.org/property/roseland-cottage)

Built in 1846 in the newly fashionable Gothic Revival style, Roseland Cottage was the summer home of Henry and Lucy Bowen and their young family. While this house is instantly recognizable for its pink exterior, Roseland Cottage has an equally colorful interior, featuring elaborate wall coverings, heavily patterned carpets, and stained glass, much of which survives unchanged from the Victorian era. The house is a National Historic Landmark.



---

## Milford Museum



Milford, Delaware  
302-424-1080  
[www.milforddemuseum.org](http://www.milforddemuseum.org)

The Milford Museum was established in 1983 in the original Post Office building in downtown Milford, Delaware. It is located at 121 South Walnut Street, Milford, DE, 19963. The Museum's Mission is to promote the history of Milford, her surrounding communities, and general Delaware history through exhibits and special programs. The building contains several permanent and changing exhibit galleries, plus a research library of Delaware publications.





## Pritzker Military Museum & Library

Chicago, Illinois  
312-374-9333  
[www.pritzkermilitary.org](http://www.pritzkermilitary.org)

A non-governmental, non-partisan organization, the Museum & Library features diverse collections, scholarly initiatives, and public programs from its flagship center in downtown Chicago. With national and global reach, we aim to share the stories of those who served, helping citizens everywhere appreciate the relationship between the armed forces and the civilians whose freedoms they protect. The Museum & Library is located on the 2nd and 3rd floors of the historic Monroe Building in downtown Chicago.

---

## Lincoln County Historical Association | Chapman-Hall House

Damariscotta, Maine  
207-882-6817  
[www.lincolncountyhistory.org/visit/museums/chapman-hall-house](http://www.lincolncountyhistory.org/visit/museums/chapman-hall-house)

Chapman-Hall House was named to honor the two families who resided in the house over a period of 153 years, the Chapman family from 1754 to 1835, and then the Hall family until 1907. This fine example of a Maine house in the Pre-Revolutionary period was built by Nathaniel Chapman in 1754. Nathaniel was a housewright in Ipswich, Massachusetts. At age 51 Nathaniel and his wife Miriam moved to the Damariscotta area (or Nobleboro, as it was known at the time), and began overseeing the building of houses.



---

## Lincoln County Historical Association | Pownalborough Court House



Dresden, Maine  
207-882-6817  
[www.lincolncountyhistory.org/visit/museums/pownalborough-court-house](http://www.lincolncountyhistory.org/visit/museums/pownalborough-court-house)

Designed by Boston architect Gershom Flagg and built in 1761 by the Kennebec Proprietors for the newly created Lincoln County, the Pownalborough Court House received such notable visitors as John Adams, Benedict Arnold, Robert Treat Paine, William Cushing, Reverend Jacob Bailey and two future Massachusetts governors: David Sewall and James Sullivan. Numerous trials were held here, including that of Judge North which was featured in the Pulitzer Prize winning book, *The Midwife's Tale* by Laurel Thatcher Ulrich, based on the diary of local resident Martha Ballard (1735-1812).



## Historic New England | Hamilton House



South Berwick, Maine

207-384-2454

[www.historicnewengland.org/property/hamilton-house](http://www.historicnewengland.org/property/hamilton-house)

Resting on thirty-five acres of fields and gardens, overlooking the Salmon Falls River, Hamilton House is recognized as one of the region's most beautiful historic sites.

Visit this picturesque National Historic Landmark to glimpse an early twentieth-century country house retreat for the Tysons and for the domestic staff who made their leisurely life at the site possible.

---

## Lincoln County Historical Association | Wiscasset Old Jail

Wiscasset, Maine

207-882-6817

[www.lincolncountyhistory.org/visit/museums/wiscasset-old-jail](http://www.lincolncountyhistory.org/visit/museums/wiscasset-old-jail)

The 1811 Old Lincoln County Jail in Wiscasset, with attached 1839 Jailer's House, offers visitors a rare view into an earlier criminal justice system and the lives of the people who enforced and endured it.

From 1820 to 1824 the Jail also served as the penitentiary for the new State of Maine. Lincoln County housed prisoners here until 1913 and continued to hold prisoners here on court days until 1953.



---

## Historic New England | The Eustis Estate



Milton, Massachusetts

617-994-6600

[www.historicnewengland.org/property/eustis-estate-museum-study-center](http://www.historicnewengland.org/property/eustis-estate-museum-study-center)

Explore a rare surviving example of late nineteenth-century architecture and design. Designed by renowned Boston architect W. Ralph Emerson and built in 1878, the Eustis Estate sits on eighty acres of picturesque landscape at the base of the Blue Hills. Full of stunning, intact architectural and design details, the Eustis Estate is a historic site unlike any other in the Greater Boston area.



## Liberty Hyde Bailey Museum

South Haven, Michigan  
269-637-3251  
[libertyhydebailey.org](http://libertyhydebailey.org)

The Liberty Hyde Bailey Museum & Gardens is located in the birthplace and childhood home of Liberty Hyde Bailey, Jr., America's "Father of Modern Horticulture", and a founder of the "New Agrarian" philosophy. Located in South Haven, Michigan, it is a National Historic Site, garden, park, museum and educational outreach center.



## Historic New England | Langdon House



Portsmouth, New Hampshire  
603-436-3205  
[www.historicnewengland.org/property/governor-john-langdon-house](http://www.historicnewengland.org/property/governor-john-langdon-house)

A National Historic Landmark, Langdon House is an exceptional 1784 Georgian mansion which George Washington "esteemed the first" in Portsmouth. Its reception rooms are of a grand scale suited to ceremonial occasions and are ornamented by elaborate wood carving in the Rococo style. The house tells the story of the early colony of New Hampshire, Portsmouth's mercantile boom, and the Colonial Revival movement.

## Remick Country Doctor Museum & Farm

Tamworth, New Hampshire  
603-323-7591  
[www.remickmuseum.org](http://www.remickmuseum.org)

Located in the village of Tamworth, Remick Country Doctor Museum & Farm is a historic site and working farm featuring exhibits, gardens, walking trails and more. Visitors are invited to explore 200+ years of NH's agricultural traditions, combined with the unique story of two country doctors, the Drs. Remick. Offering seasonal learning, family-friendly activities, tours and special events. Remick has twice been named an "Editors' Pick: Best of New England" by Yankee Magazine and voted a "Family Favorite" by the readers of Parenting NH Magazine.





# T N A R M M E M B E R S

## Granger Homestead and Carriage Museum

Canandaigua, New York  
585-394-1472  
[grangerhomestead.org](http://grangerhomestead.org)

The Granger Homestead was the home of Gideon Granger, the longest-serving Postmaster General in U.S. History under Presidents Jefferson and Madison. The frame structure of this historic site is composed of two sections: a Federal-style main block with central hall plan constructed in 1815-16; and a rear wing, added in 1860. The principal, west facade, faces North Main Street.



## George Eastman Museum



Rochester, New York  
585-327-4800  
[www.eastman.org](http://www.eastman.org)

The George Eastman Museum is located in Rochester, New York, on the estate of George Eastman, the pioneer of popular photography and motion picture film. Founded in 1947 as an independent nonprofit institution, it is the world's oldest photography museum and one of the oldest film archives. The museum holds un-

paralleled collections—encompassing several million objects—in the fields of photography, cinema, and photographic and cinematographic technology, and photographically illustrated books. The institution is also a longtime leader in film preservation and photographic conservation.

## Museum of the Cherokee Indian

Cherokee, North Carolina  
828-497-3481  
[mci.org](http://mci.org)

Established in 1948, the Museum of the Cherokee Indian is one of the longest-operating tribal museums in the United States. Recognized for its innovative storytelling, the Museum features exhibits, artwork, and hands-on technology that brings 12,000 years of Cherokee history to life.





## Cleveland Museum of Art

Cleveland, Ohio  
216-707-2266  
[www.clevelandart.org](http://www.clevelandart.org)

Since opening its doors in 1916, the Cleveland Museum of Art has gained worldwide recognition for the superb quality of its comprehensive collection. With more than 42,000 objects, the museum's collection spans 6,000 years of creative achievement. The museum completed its renovation and expansion in 2013; new permanent collection, temporary exhibition spaces, the award-winning ArtLens Gallery, and the Ames Family Atrium are now open to all. Special exhibitions and programs continue at the museum and throughout the community.



---

## Rutherford B. Hayes Presidential Library & Museums



Fremont, Ohio  
419-332-2081  
[www.rbhayes.org](http://www.rbhayes.org)

Visit President Rutherford and First Lady Lucy Hayes' wooded estate of Spiegel Grove, home of America's first presidential library. Tour the couple's 31-room Victorian mansion, see their tomb, visit the museum, explore the library and walk the mile of paved trails. The estate is also an arboretum with 1,700 trees and a variety of plants and spring wildflowers. Open year-round. Special events are offered throughout the year.

---

## Tulsa Historical Society and Museum

Tulsa, Oklahoma  
918-712-9484  
[www.tulsahistory.org](http://www.tulsahistory.org)

The Tulsa Historical Society and Museum (THSM) is the only museum in Tulsa focused on building, preserving, and presenting a broad-based general collection of Tulsa's history. The museum chronicles the city's vibrant past through eight rotating exhibit galleries, special events, and activities for adults and youth. Established in 1963, THSM holds an extensive collection of nearly 200,000 archival items and three-dimensional artifacts that help preserve Tulsa's past.





# T N A R M M E M B E R S

## Lincoln County Historical Society | Pacific Maritime Heritage Center



Newport, Oregon  
541-265-7509  
[oregoncoasthistory.org](http://oregoncoasthistory.org)

The Pacific Maritime Heritage Center is one of two museum locations operated by the Lincoln County Historical Society in Newport, Oregon. The exhibits and programming share the stories of those who desire to live and work where the sea meets land, and along its rivers and estuaries. This 30,000 sq. ft. interactive center incorporates the working wharf, educational programs, and local

maritime uses. The center features maritime-related exhibits and art. Located in an impressive building on Newport's historic Bayfront, the building and site were purchased by the Lincoln County Historical Society in 2004 and have undergone extensive renovation.

## Historic New England | Watson Farm

Jamestown, Rhode Island  
401-423-0005  
[www.historicnewengland.org/property/watson-farm](http://www.historicnewengland.org/property/watson-farm)

Before European settlement, the Narragansett tribe occupied Conanicut Island, clearing the land and planting crops. The resulting grasslands attracted colonial farmers for pasturing their sheep and cattle. In 1789 Job Watson purchased a piece of this rich farmland, and for the next two centuries five successive generations of the Watson family cultivated it. Still a working family farm today, explore this 265-acre property with a self-guided landscape walking tour.



## Sigal Music Museum

Greenville, South Carolina  
864-520-8807  
[sigalmusicmuseum.org](http://sigalmusicmuseum.org)

The Sigal Music Museum is home to one of the largest collections of historically significant musical instruments in the country. In addition to ever-changing displays of our permanent pieces, the museum hosts the exhibits of culturally important instruments on loan from various institutions and collections. Our museum also serves as a performance venue, providing space for intimate concerts by distinguished local and international artists. We also offer opportunities for audiences to hear special performances on select period instruments.



## Historic Rugby

Rugby, Tennessee  
423-628-2441 Ext. 1  
[www.historicrugby.org](http://www.historicrugby.org)

To carry out and encourage, within the context of a living historical village, the restoration, preservation, protection, management and the interpretation of the man-made and natural historic resources, and the British and Appalachian heritage for the education and benefit of all people.



---

## Dallas Heritage Village



Dallas, Texas  
214-413-5141  
[dallasheritagevillage.org](http://dallasheritagevillage.org)

The mission of Dallas Heritage Village is to collect, preserve, and teach the history of Dallas and North Central Texas. Located in historic Old City Park, the museum uses its collections of historic buildings and furnishings, representing the period 1840-1910, to sponsor research, publications, and exhibits, and to present educational programs and special events for diverse audiences of children, families, and adults.





## The *only* art museum search engine in the U.S.!

Discover more than 1200 museums across the U.S.  
... listed all in one place!

Wherever you are or wherever you're going,  
**ArtGeek** provides descriptive listings of *all* the

- art museums
- historic houses & artists' studios
- sculpture & botanical gardens, and
- other cultural venues hosting art exhibits



## Planning a trip?

Now it's easy and convenient to find art and museums that interest you  
wherever you are or wherever you go in the U.S.

- ✓ Searchable by city or state
- ✓ Editor-selected featured exhibitions
- ✓ Links to each museum's own website for FAQs
- ✓ Culture-travel blog, articles and reviews
- ✓ Book suggestions for culture-travelers

**ArtGeek™ is good news for art-lovers who travel!**



## Virtual Tour Presented by the American Sign Museum

Explore over 100 years of signs through a combination of an audio tour, videos, and photographs from the Museum's collection. The American Sign Museum is the largest museum of its kind and promotes American history and craftsmanship through the preservation of signs.

Link: [asm.oncell.com/en/index.html](http://asm.oncell.com/en/index.html)

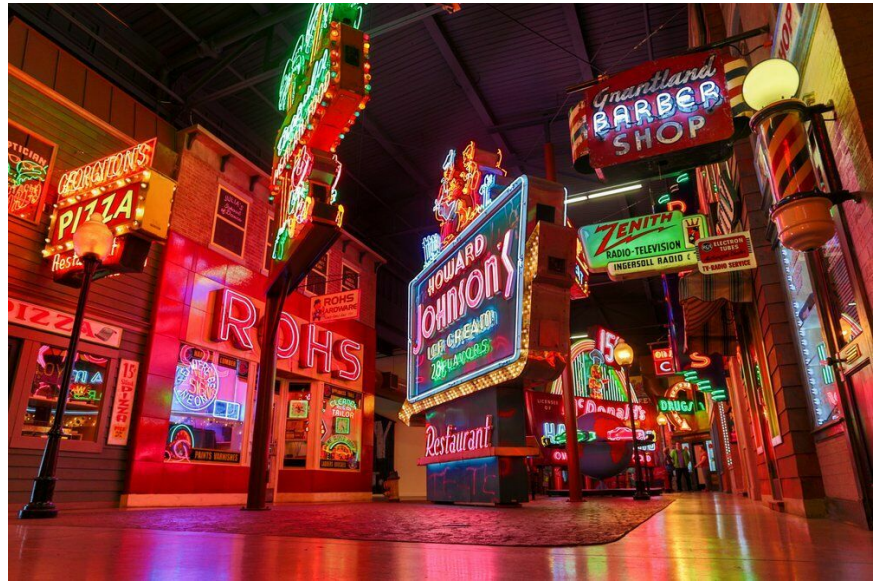


Image: Wayne Clause Medium

## Museum Programs on Vimeo Presented by the Jefferson Museum of Art & History



Revisit Past Programs Presented by the Jefferson Museum of Art & History

Select recordings from Jefferson County Historical Society's 2021 museum program season are available now on Vimeo. Programming includes all events from JCHS's 2021 First Friday Speaker Series, The Art of Making, a celebration of makers from throughout Jefferson County and the broader Olympic Peninsula in Washington State. Also featured is a panel discussion from the Jefferson Museum's 2021 Witnessing Climate Change exhibition. An interdisciplinary exhibition, Witnessing Climate Change featured nearly 50 years of research by ornithologist George Divoky rendered through the expeditionary art of Maria Coryell-Martin with support from educator Katie Morrison. The paintings and stories inspired by Divoky's research illustrate biological, atmospheric, and personal consequences of a warming Arctic.

Link: [vimeo.com/user112070940](https://vimeo.com/user112070940)

Expeditionary artist Maria Coryell-Martin on Cooper Island in 2019, collecting images and audio that became foundation of Witnessing Climate Change (photo courtesy of Maria Coryell-Martin)



## Virtual Studio Tours Presented by the The Brandywine River Museum of Art



Image: Daniel Jackson

The Brandywine River Museum of Art is excited to offer new virtual tours of the N. C. Wyeth Studio and Andrew Wyeth Studio—both National Historic Landmarks. This immersive, self-directed experience features a virtual 360-degree tour of each property, enhanced by the option to click on selected objects in each studio to access the fascinating stories of creative activity represented by each site. Both sites are also open seasonally to the public for in-person tours.

The virtual tours are best viewed on a computer.

Link: [www.brandywine.org/virtual-studios](http://www.brandywine.org/virtual-studios)

## 360 Virtual Tours Presented by the Museum of Contemporary Art Jacksonville



Image: Priya Kambli (Indian-American, born 1975), Baba (Mumas Bangles), 2012. From the series "Color Falls Down." Archival inkjet print. Courtesy the artist. Presented in the exhibition titled "Heirloom: Weaving Memory with the Now."

Take a virtual tour through the many varied and wonderful past exhibitions presented by the Museum of Contemporary Art Jacksonville.

Link: [www.360viewvirtualtours.com/moca](http://www.360viewvirtualtours.com/moca)



# Why Use a Portal?

People use portals **to get links** to search, videos, user posts, purchases, history, resale items...

Google

amazon

ebay

f

WIKIPEDIA

**TRIPinfo.com** is a **portal used for logistics and details** that are needed when planning Leisure Group Trips.

YouTube

yahoo!

craigslist

Instagram

twitter

Common Denominators	Popular Portals	TRIPinfo.com
<b>Pioneer</b>	Some of the first commercial websites launched in 1996	One of the first commercial travel websites – launched in 1996
<b>Purpose</b>	Trusted website, loyal audiences	Trusted website, loyal audience
<b>Design</b>	Simple, clean, and largely unchanged since launch	Simple, clean, and largely unchanged since launch
<b>Influence</b>	Among the most popular global websites...hundreds of millions, even billions of monthly visits	Most popular website in its category...consistently 40,000-50,000 monthly visits
<b>Pages per Visit, Time on Site</b>	Higher than non-portal sites	Higher than non-portal sites
<b>Bounce Rate</b>	Lower than non-portal sites	Lower than non-portal sites
<b>Privacy</b>		User privacy protected. Acceptable Ads Certified: Strict global standards for unobtrusive, self-selected, tasteful ads

**TRIPinfo**  
GROUP TRIPS START HERE



## **New and Rejoining members 3/15/2022 through 6/14/2022**

CANADA, NB, Fredericton, Beaverbrook Art Gallery, 506-458-2028

CANADA, QC, Montreal, Canadian Centre for Architecture, 514-939-7001

ALABAMA, Sylacauga, Isabel Anderson Comer Museum & Arts Center, 256-245-4016

ARIZONA, Prescott, Sharlot Hall Museum, 928-445-3122

ARKANSAS, Springdale, Shiloh Museum of Ozark History, 479-750-8165

CALIFORNIA, Sunnyvale, Sunnyvale Heritage Park Museum, 408-749-0220

COLORADO, Boulder, The Colorado Chautauqua, 303-442-3282

COLORADO, Fort Collins, Poudre Landmarks Foundation, 970-221-0533

COLORADO, Morrison, Dinosaur Ridge, 303-697-3466

CONNECTICUT, Woodstock, Historic New England | Roseland Cottage\*, 860-928-4074

DELAWARE, Milford, Milford Museum, 302-424-1080

ILLINOIS, Chicago, Pritzker Military Museum & Library, 312-374-9333

MAINE, Damariscotta, Lincoln County Historical Association | Chapman-Hall House, 207-882-6817

MAINE, Dresden, Lincoln County Historical Association | Pownalborough Court House,  
207-882-6817

MAINE, South Berwick, Historic New England | Hamilton House\*, 207-384-2454

MAINE, Wiscasset, Lincoln County Historical Association | Wiscasset Old Jail, 207-882-6817

MASSACHUSETTS, Milton, Historic New England | The Eustis Estate\*, 617-994-6600

MICHIGAN, South Haven, Liberty Hyde Bailey Museum, 269-637-3251

NEW HAMPSHIRE, Peterborough, Mariposa Museum & World Culture Center, 603-924-4555

NEW HAMPSHIRE, Portsmouth, Historic New England | Langdon House\*, 603-436-3205

NEW HAMPSHIRE, Tamworth, Remick Country Doctor Museum & Farm, 603-323-7591

NEW YORK, Canandaigua, Granger Homestead and Carriage Museum, 585-394-1472

NEW YORK, Rochester, George Eastman Museum\*\*, 585-327-4800






***With traditional membership cards, you might be spending more than you think.***

Find out what type of return on investment you can expect by offering your members digital membership cards.

**Digital Membership ROI & Savings Calculator!**

Check it out @ <https://cuseum.com/calculator>

**DIGITAL MEMBERSHIP CARDS** by  **CUSEUM**



### New and rejoining members 3/15/2022 - 6/14/2022 (continued)

NORTH CAROLINA, Cherokee, Museum of the Cherokee Indian, 828-497-3481

OHIO, Cleveland, Cleveland Museum of Art, 216-707-2266

OHIO, Fremont, Rutherford B. Hayes Presidential Library & Museums\*, 419-332-2081

OKLAHOMA, Tulsa, Tulsa Historical Society and Museum, 918-712-9484

OREGON, Newport, Lincoln County Historical Society | Pacific Maritime Heritage Center, 541-265-7509

PENNSYLVANIA, Philadelphia, Weitzman National Museum of American Jewish History\*\*\*, 215-923-3811

RHODE ISLAND, Jamestown, Historic New England | Watson Farm\*, 401-423-0005

SOUTH CAROLINA, Greenville, Sigal Music Museum, 864-520-8807

TENNESSEE, Rugby, Historic Rugby, 423-628-2441 Ext. 1

TEXAS, Dallas, Dallas Heritage Village, 214-413-5141

TEXAS, Houston, Houston Maritime Center, 713-666-1910

VIRGINIA, Richmond, Wilton House Museum, 804-282-5936

### Updates

CALIFORNIA, Claremont, Claremont Museum of Art, Name change, Claremont Lewis Museum of Art

DISTRICT OF COLUMBIA, Washington, Hillwood Estate, Museum and Gardens, Add restriction, \*

GEORGIA, Kennesaw, Smith-Gilbert Gardens, Add restriction, \*

MARYLAND, Baltimore, The Edgar Allan Poe House & Museum, Remove, Lost contact

MASSACHUSETTS, Danvers, Danvers Historical Society, Remove, Not renewing this year

MASSACHUSETTS, Dedham, Dedham Historical Society & Museum, Name change, Dedham Museum & Archive

MICHIGAN, Muskegon, Hackley & Hume Historic Site, Name change, Muskegon Historic Sites

MICHIGAN, Muskegon, Lakeshore Museum Center and its Historic Sites, Name change, Muskegon Museum of History & Science

MICHIGAN, Muskegon, Muskegon Heritage Museum, Name change, Muskegon Heritage Museum of Business & Industry

MINNESOTA, Duluth, Tweed Museum of Art, Remove, Lost contact

NEW YORK, Queens, Queens Museum, Remove, Lost contact

OKLAHOMA, Tulsa, Philbrook Museum of Art, Add restriction, \*

TENNESSEE, Tullahoma, Tullahoma Art Center, Remove, Lost contact

TEXAS, El Paso, El Paso Museum of History, Remove, Lost contact

WEST VIRGINIA, Huntington, Heritage Farm Museum & Village, Add restriction, \*\*\*



