

NA
RM

*North American Reciprocal
Museum (NARM) Association®*

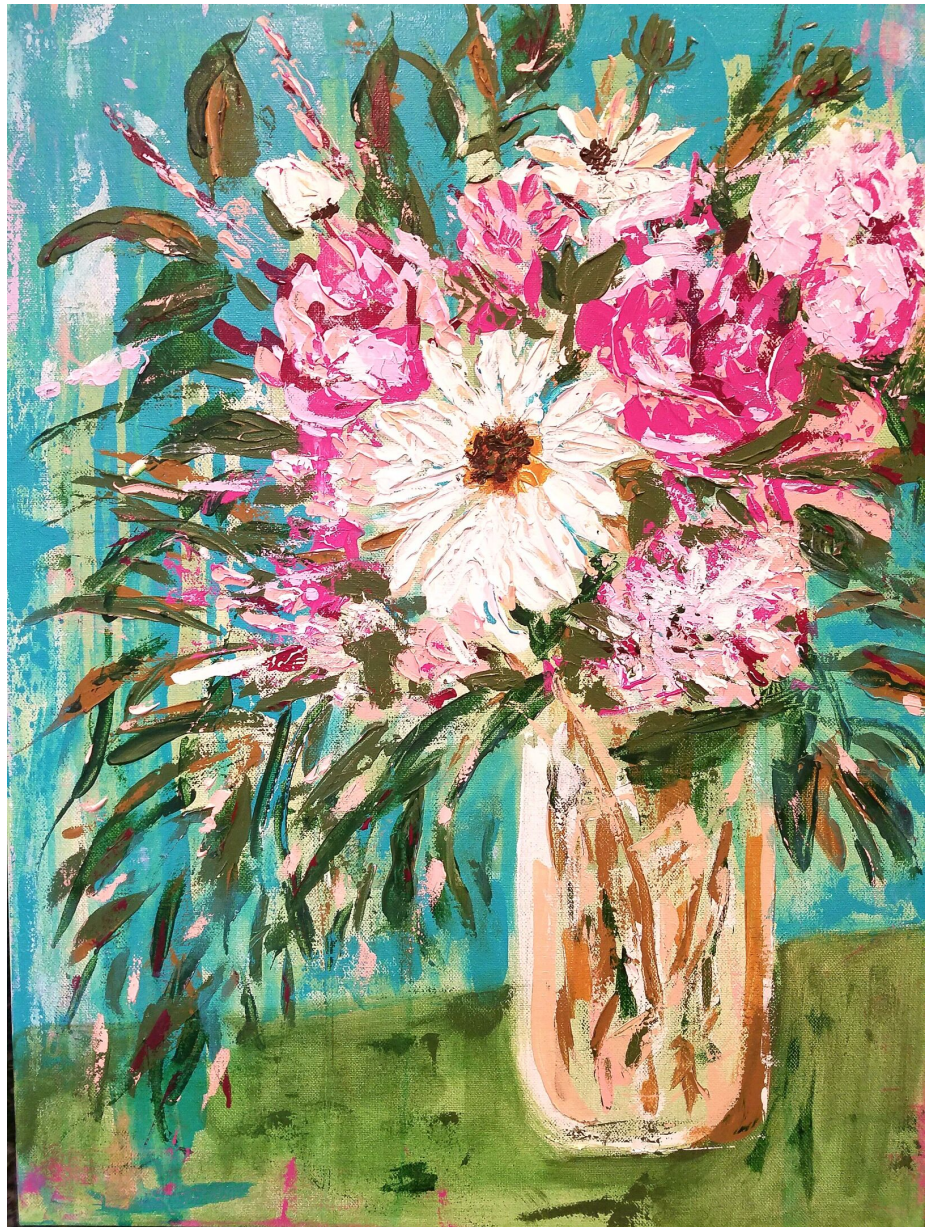
Quarterly
Spring 2023



Featured Artist:
Theresa Wells Stifel

Primarily self-taught, award-winning mixed media artist Theresa Wells Stifel enjoys integrating vintage notions and ephemera into her contemporary works. Being able to combine them into her work so they take a new function as art (rather than end up in a landfill) brings her joy.

Using these scraps in modern art creates new ways of connecting to the past and causing contemplation of the future. Her mission is to create a piece bold enough to stand on its own when viewed across a wide room but that is intricate enough to make you want to walk up close and marvel at the bits that make up the whole.



Wells Stifel has exhibited in both solo & group shows throughout Delaware, Maryland, Washington, DC and Virginia. Her work is held in private collections in the United States, Africa and Europe. Wells Stifel has completed commissions for private, design and corporate clients.

Contact information:
703-407-0770
TheresaWellsStifel.com
StifelandCapra.com

[Images used on front cover, page 2 and back cover: Theresa Wells Stifel, *Deborah's Daisy*]

Contents

Meet our Newest Members.....4

Virtual Programming.....19

Et cetera...

New and rejoining members.....23

Other updates.....25

The NARM Quarterly is a publication of the North American Reciprocal Museum (NARM) Association®, 2607 Woodruff Road, Ste E #412, Simpsonville, SC 29681. © North American Reciprocal Museum (NARM) Association®, all rights reserved in all media.

Artemizia Foundation

Bisbee, Arizona
520-366-6281
www.artemiziafoundation.org

The Artemizia Foundation champions Diversity in Gender, Orientation, Ethnicity & Worldview. Artemizia Foundation's new home at 818 Tombstone Canyon in historic Bisbee includes:

The Museum of Contemporary, Graffiti and Street Art where visitors can experience works by Banksy, Swoon, Warhol, Lady Pink, and more; Gallery 818 with exhibitions and cultural events featuring cutting-edge national and international artists; Mural Labyrinth with 12 interconnecting rooms and passageways, with murals, neon installations, paste-ups and surprises; a Sculpture Garden & Picnic Area where visitors can bring lunch or a snack and enjoy our gorgeous patio.



Bentonville History Museum



Bentonville, Arkansas
479-696-4210
www.bentonvillehistorymuseum.org

The Bentonville History Museum is a catalyst for engaging the broadening community. Our goal is to create a space to develop, preserve, and nourish the historical representation of our community. It is our mission and our unwavering objective to both celebrate and survey Bentonville's unique and varied history.

Bentonville has been a catalyst for change and action for decades. It is our mission to guide the future through the past and offer a hands-on exploration of the stories that have shaped our community and will continue to do so for generations to come.

Moulton Museum

Laguna Hill, California
949-868-7386
moultonmuseum.org

The Moulton Museum is expanding the collective understanding of the ranching era and its lasting impact on the economic, social, architectural, and cultural fabric of Orange County.

We actively archive, restore, and preserve Orange County historical artifacts and are committed to sharing the collection with the public through rotating exhibitions that feature Lewis F. Moulton's ranching legacy and more.



T NARM MEMBERS



MEET OUR NEWES

Art League of Lincoln



Lincoln, California
916-209-3499
artleagueoflincoln.com

As a community response to support local art, Art League of Lincoln (ALL) is a community-based arts organization dedicated to supporting the arts in the greater Lincoln area in order to promote, foster, and support the arts through exhibits, shows, tours, education, and other activities for artists and art appreciators. ALL gallery and center is located in downtown Lincoln, hosting exhibits, competitions, workshops, and educational events for adults and children and features a gift shop with items from participating local artists.

Fort Collins Museum of Discovery

Fort Collins, Colorado
970-221-6738
fcmo.org

Fort Collins Museum of Discovery is an all-ages, science, history and cultural museum established in 2008 through a public-private partnership between the City of Fort Collins and the Nonprofit Partner, Fort Collins Museum of Discovery (or FCMoD). The museum creates meaningful opportunities to learn, reflect, and have fun through hands-on and collections-based explorations in science and culture.



The Bruce Museum

Greenwich, Connecticut
203-869-0376
brucemuseum.org

The Bruce Museum is a world-class institution highlighting art, science and natural history.

T N A R M M E M B E R S

Military Heritage Museum

Punta Gorda, Florida
941-575-9002
militaryheritagemuseum.org

The Military Heritage Museum's purpose is to honor all who serve. From the Revolutionary War through modern conflicts and across all six military branches, the Museum utilizes multiple methods to educate its visitors on the heritage aspects of US military history. Through a blend of integrating its twenty thousand plus artifacts, veteran museum guides, flight simulators, graphics, live performance, and audiovisual, the Museum provides unique innovative experiences throughout its 17,000 sq. ft. facility.



Sebring Historical Society | Charles F. Weigle House Museum & Archives



Sebring, Florida
863-471-2522
www.sebringhistoricalsociety.info

Sebring Historical Society is home to both the Charles F. Weigle House Museum and the Sebring Historical Society Archives. Charles F. Weigle House Museum is a historic property where docents lead tours, tell the history of Sebring and Highlands County, Florida. Our archives collect printed material and artifacts dealing with local history. We have an extensive genealogy library collection with books and records. The Sebring Historical Society's museum collection tells the story of the people,

history, and culture of Sebring and Highlands County through an array of exciting and interesting exhibits.

Hammonds House Museum

Atlanta, Georgia
404-612-0481
www.hammondshouse.org

Nestled on a quiet street in Atlanta's historic West End, Hammonds House Museum (HHM) is a unique setting to explore the cultural diversity and legacy of artists of African descent. The Museum is the former residence of the late Dr. Otis Thrash Hammonds, a prominent physician and a passionate arts patron. After his death in June 1985, the Fulton County Board of Commissioners purchased the house and the collection of 250 artworks. Today, HHM boasts a permanent collection of more than 450 works dating from the mid-19th century by artists from America, Africa, and the Caribbean.



Historic Savannah Foundation | Davenport House Museum



Savannah, Georgia
912-236-8097
davenporthousemuseum.org

The Isaiah Davenport House is a historic home in Savannah, Georgia, United States, built in 1820. It has been operated as a historic house museum by the Historic Savannah Foundation since 1963.

Riley County Historical Society & Museum

Manhattan, Kansas
785-565-6490
www.rileychs.com

Established in 1914, the Riley County Historical Society & Museum (RCHSM) collects, preserves, and presents the heritage of Riley County and the State of Kansas, supporting, advocating for and promoting an interest and awareness of our local history and the Riley County Historical Museum for the benefit of all.

In addition to the Museum, the Society manages and operates a number of other historically significant properties and museums throughout the County.



John F. Kennedy Hyannis Museum



Hyannis, Massachusetts
508-790-3077
jfkhyannismuseum.org

The John F. Kennedy Hyannis Museum preserves and promotes the legacy of President Kennedy, his family and their deep connection to Cape Cod, where they enjoyed special days with family and friends.

Seasonal programs include the winter speaker series Coffee @ The Kennedy Museum, as well as weekly Director's Talks with behind the exhibit details, and member gatherings in the Courtyard or in the Scudder Family Center for Civic Engagement.

T N A R M M E M B E R S

Norway House

Minneapolis, Minnesota
612-871-2211
www.norwayhouse.org

Norway House is a forward-thinking, international business and culture organization in Minneapolis, Minnesota dedicated to establishing, renewing, and advancing connections between contemporary Norway and the United States through education and partnerships centered around the arts, business, and culture.



Canterbury Shaker Village



Canterbury, New Hampshire
603-783-9511
www.shakers.org

Canterbury Shaker Village is a historic site and museum in Canterbury, New Hampshire, United States. It was one of a number of Shaker communities founded in the 19th century. It is one of the most intact and authentic surviving Shaker community sites, and was declared a National Historic Landmark in 1993.

Jewish Heritage Museum of Monmouth County

Freehold, New Jersey
732-252-6990
www.jhmomc.org

The Jewish Heritage Museum of Monmouth County is dedicated to the promotion of public awareness of the County's Jewish heritage for the education and enjoyment of both children and adults. Its mission is to present exhibits, programs and publications that celebrate, preserve, explore and illustrate the rich and unique history of the Jewish residents of Monmouth County, New Jersey, and their contribution to the community.



MEET OUR NEWES

Roberson Museum and Science Center



Binghamton, New York
607-772-0660
www.roberson.org

Roberson Museum and Science Center is a cultural hub of activities and events, serving the greater Binghamton community. Our mission remains to engage and educate a diverse population by providing regionally significant exhibitions and programs in art, history, and science.

Open to the public since 1954, Roberson is an educational destination with a stunning array of engaging exhibits, community events, a planetarium, and a historic mansion.

Williamson-Pultneyville Historical Society

Williamson, New York
315-589-9892
www.w-phs.org

The Williamson-Pultneyville Historical Society is a 501(c)(3) nonprofit all-volunteer organization. Located in the historic district in the hamlet of Pultneyville, New York, the Society owns and manages three properties; The W-PHS house at 4130 Mill Street, Historic Gates Hall at 4107 Lake Road and Centennial Park in the center of the hamlet. The Society house features both permanent and revolving exhibits and extensive archives and is open to the public weekends mid-June through mid-October and by special appointment November-May. Gates Hall proudly bears the distinction as the oldest, continuously active small community theatre in the United States, residing on both the State and National Registers of Historic Places.



Cummings Center for the History of Psychology



Akron, Ohio
330-972-7285
www.uakron.edu/chp

The Cummings Center is home to the National Museum of Psychology and the Institute for Human Science and Culture. Through interactive exhibits, unique artifacts, and original artwork, visitors are invited to explore our shared humanity.

The National Museum of Psychology features both permanent and rotating exhibits on psychology's history as a profession, a science, and an agent of social change. Highlights include the home movies of Sigmund Freud, the simulated shock generator from Stanley Milgram's obedience studies, and more.

T N A R M M E M B E R S



Hancock Historical Museum

Findlay, Ohio
419-423-4433
www.hancockhistoricalmuseum.org

The Hancock Historical Museum is preserving the rich history of Hancock County to honor the past and inspire the future. Founded in 1970, the privately-funded museum includes nine buildings at two sites, and programming that reaches nearly 25,000 people annually. Highlights include the Victorian-era Hull House, Marathon Transportation Annex with Findlay-made Grant cars, Agriculture Building showcasing the evolution of farming practices in the region, and expansive exhibit center with rotating exhibits of special interest.

The Dalles Art Center

The Dalles, Oregon
541-296-4759
www.thedallesartcenter.org

The Dalles Art Center (TDAC) is a connecting hub to inspire and engage with art for The Dalles, Wasco County, and The Columbia Gorge. We produce nine exhibitions a year and support local and regional artists through are exhibition and sales galleries. All of the arts are supported at the center through monthly Writer's Talks, Live Performances and several public art programs that engage visitors and our community with the history and beauty of our region. TDAC offers workshops and classes in the arts for students and adults throughout the year.



Greenville Center for Creative Arts

Greenville, South Carolina
864-696-2661
artcentergreenville.org

Greenville Center for Creative Arts (GCCA) is Greenville, SC's year-round hub for unique visual arts experiences. At GCCA, you'll have the opportunity to see innovative exhibitions by local, regional, and nationally known artists, meet a variety of resident working artists in their studios, and express your creativity through a year-round curriculum of art classes and workshops. With three rotating gallery spaces, there is always something new to see at GCCA.



MEET OUR NEWES

Old Post Office Museum & Art Center



Graham, Texas
940-549-1470
www.opomac.net

The Old Post Office Museum & Art Center (OPOMAC) is dedicated to the development and maintenance of the general museum of history and fine arts for the education and enrichment of the citizens of Young County and its environs. OPOMAC collects, preserves and exhibits items related to the history of the Young County region.

Our goal is to bring about a better understanding and appreciation of history, art, and the natural environment of the area.

Czech Center Museum Houston

Houston, Texas
713-528-2060
www.czechcenter.org

The Czech Center Museum Houston provides unique educational experiences based on authentic objects, art, music, stories, and lives of Czechs, Slovaks, and people of all cultures who left their country to seek liberty and democracy in America.

Our purpose is to inspire people to learn from those who sought freedom despite oppressive rulers and systems. The museum strives to be an accessible resource, actively encouraging the study, appreciation, understanding, and enjoyment of diverse cultures and traditions.



Lake Jackson Historical

Lake Jackson, Texas
979-297-1570
www.ljhistory.org

Lake Jackson Historical Association (LJHA) operates the Lake Jackson Historical Museum, the Alden B. Dow Office Museum, and the Jackson Plantation Historic Site. The Historical Museum chronicles the rich history of the area from native Karankawa hunters to wartime industry and beyond. Learn about the streets named This Way and That Way; read about Tejano superstar Selena's early years; experience the Windecker Eagle airplane; watch a movie in the 1943 Lake Theater exhibit; and more.

T N A R M M E M B E R S

Park-McCullough Historic Governor's Mansion



North Bennington, Vermont
802-442-5441
www.parkmccullough.org

Park-McCullough is one of New England's finest, most significant, and best-preserved Victorian Mansions. It is an important example of a country house in the Second Empire Style and incorporates architectural features of the Romantic Revival style that was popular at the time. Yet, to a great extent, the Estate retains the integrity and impact of its original design. Built in 1864-65 by attorney and entrepreneur Trenor Park, the "Big House" as it was fondly referred to, was designed by Henry Dudley, a prolific New York architect of the famous firm Diaper and Dudley.

Virginia Quilt Museum

Harrisonburg, Virginia
540-433-3818
www.vaquiltmuseum.org

Nestled in the heart of the picturesque Shenandoah Valley in Harrisonburg, Virginia, the Museum promotes a unique blend of art and cultural heritage. With three floors of gallery space the museum celebrates the beauty of quilts through exhibitions that change at least three times a year. Historical, modern, art, and traditional quilts are featured simultaneously, allowing visitors the opportunity to explore the variety of styles, techniques, themes, and artistry found in quilts.



Wisconsin Historical Society | Circus World



Baraboo, Wisconsin
608-356-8341
www.circusworldbaraboo.org

Step into the color, excitement and thrills of life under the Big Top at Circus World. Located at the original home of the Ringling Bros. Circus in Baraboo, this National Historic Landmark site examines the innovations, excitement and wonder of the American circus.

Through your self-guided tour of the grounds, you'll explore seven massive buildings that bring to life the fascinating heritage of the more than 100 circuses that made their home in Wisconsin. You'll experience the legendary lives and profound pageantry that fueled America's most popular form of entertainment through engaging exhibits for all ages.

Wisconsin Historical Society | First Capitol

Belmont, Wisconsin
608-987-2122
firstcapitol.wisconsinhistory.org

Visiting First Capitol brings you back to Wisconsin's beginnings, in the rooms where it all happened. It was within the walls of these restored historic structures that debates raged over how this new territory would govern itself.

While at First Capitol, visitors can browse engaging exhibits and walk through the halls where the framework for Wisconsin's government was crafted, including the establishment of a judicial system, roads and railroads, and naming Madison as the permanent capital city.



Wisconsin Historical Society | Stonefield

Cassville, Wisconsin
608-725-5210
stonefield.wisconsinhistory.org

Stonefield's village includes 30 historic shops and factories that transport you back in time to the streets of Wisconsin over 100 years ago, including a newspaper office, cheese factory, bank, saloon, and more.

See the largest collection of farm equipment and vintage tractors in the state at the State Agricultural Museum. Visit the home of Wisconsin's first governor and see fascinating artifacts that tell the story of Wisconsin's transition from territory to state. With every step of the journey at Stonefield, visitors are immersed in the spirit of ingenuity that helped propel Wisconsin forward.

Cedarburg Art Museum

Cedarburg, Wisconsin
262-377-6123
www.cedarburgartmuseum.org

The Cedarburg Art Museum is an inclusive gathering space that celebrates both local and Wisconsin art through original exhibitions and programs. The museum supports, enhances, and furthers the creative arts in our community while providing a variety of inventive classes for all age groups. The Gift Shop offers unique items handmade by talented local artists, and our family-friendly Summer Beer Garden is a prime destination for live music performances and a beautiful sculpture garden. Visit us to experience a variety of special exhibitions, adult and children's programming, artist chats and receptions, and so much more.



T N A R M M E M B E R S

Wisconsin Historical Society | Old World Wisconsin

Eagle, Wisconsin
262-594-6301
oldworldwisconsin.
wisconsinhistory.org

Set against the backdrop of the Kettle Moraine State Forest and 600 acres of picturesque woodlands, prairie, and wetlands, visitors experience a one-of-a-kind place where the modern world fades away to reveal over a century of history. The site includes authentically restored historic homes, farms, stores, and workshops. Meet furry friends on the farms, see sparks fly in the blacksmith shop, and more.



Ephraim Historical Foundation & Historic Sites



Ephraim, Wisconsin
920-854-9688
ephraim.org

Founded in 1949 as a non-profit preservation organization, The Ephraim Historical Foundation is dedicated to preserving, sustaining, and sharing the history, culture, and beauty of Ephraim, Wisconsin. The Ephraim Historical Foundation operates a wide

variety of historic attractions in Ephraim across five historic sites. Visitors can explore all of the Ephraim Historical Foundation's historic properties and view exhibits for free. The Ephraim Historical Foundation also offers tram tours, kayak tours, and special walking tours.

Wisconsin Historical Society | Wade House

Greenbush, Wisconsin
920-526-3271
wadehouse.wisconsinhistory.org

Visiting Wade House takes visitors on a journey through Wisconsin's past with tours of the Wade House Inn, a blacksmith shop, a sawmill, and the Wesley W. Jung Carriage Museum. Wade House is named for the stagecoach hotel built by the first European settlers of the town, Sylvanus and Betsey Wade.

The inn, built between 1847 and 1851, was constructed conveniently between the cities of Fond du Lac and Sheboygan along a well-used stagecoach trail. This made the 27-room Greek Revival hotel a popular resting point for weary travelers.



Wisconsin Historical Society | Madeline Island Museum



La Pointe, Wisconsin

715-747-2415

madelineislandmuseum.wisconsinhistory.org

The Madeline Island Museum celebrates all of the cultures who have called the island home. The Ojibwe and other tribes made their home on Madeline Island, the largest of the Apostle Islands, for hundreds of years before European contact and also one of the earliest areas of European exploration and settlement in the interior of North America, serving as a post for the fur trade, commercial fishing, and missionary activities. Bella and Leo Capser opened the Madeline Island Museum in 1958, and their original collection of artifacts documenting the island's history can still be seen.

Wisconsin Historical Society | Black Point Estate & Gardens

Lake Geneva, Wisconsin

262-248-1888

blackpointestate.wisconsinhistory.org

Visiting Black Point Estate & Gardens feels like stepping back into a 19th-century dinner party, as visitors enjoy the cool lake breezes on the mansion's veranda, sip Seipp beer, and hear the soothing sounds of the 1911 Chickering piano. After a 45-minute scenic boat tour of beautiful Geneva Lake, visitors arrive at the expansive and elegant estate, spanning eight acres of land and 620 feet of undisturbed shoreline. The jewel of the experience is a 90-minute tour of the first two floors of the Queen Anne-style mansion that includes 20 rooms. Black Point is a rare time capsule that spans Wisconsin



Wisconsin Historical Society | Wisconsin Historical Museum



Madison, Wisconsin

608-264-6555

historicalmuseum.wisconsinhistory.org

Located at the top of State Street on Wisconsin's Capitol Square in Madison, the new 100,000-square-foot history center will more than double exhibition space of the previous museum, welcome 200,000 guests annually and double the number of students served to 60,000. Currently, visitors can access the Museum Store to shop some of the history of Wisconsin and find unique items that are sure to delight visitors of all ages, including books, home decor, jewelry, clothing, toys, and much more.

Wisconsin Historical Society | Pendarvis

Mineral Point, Wisconsin
608-987-2122
pendarvis.wisconsinhistory.org

Bob Neal and Edgar Hellum met in 1934 and dedicated their lives to saving the structures and stories of Mineral Point's mining history. The couple salvaged, restored, and made these buildings shine again, even establishing a popular restaurant on the site to fund their preservation efforts. Tucked away in a valley in historic Mineral Point, Pendarvis celebrates the groundbreaking community of some of the first Wisconsin "badgers." As you approach this charming neighborhood, the 19th century will instantly come alive through the quintessential limestone buildings and cozy nooks.



Wisconsin Historical Society | Reed School



Neillsville, Wisconsin
608-253-3523
reedschool.wisconsinhistory.org

Visiting Reed School takes you back to an era of education that is very different from the massive school buildings students attend today. In the early 1900s, more than 6,000 one-room schools just like this dotted the Wisconsin landscape, with one teacher instructing many grade levels at the same time. Reed School immerses visitors in this world, with exhibits outlining the history of the United States free school movement, along with displays of historic school supplies and newspaper volumes. Audio and visual screens share the stories and experiences of former students.

Wisconsin Historical Society | Villa Louis

Prairie du Chien, Wisconsin
608-326-2721
villalouis.wisconsinhistory.org

Early settlers to Prairie du Chien, the Dousmans made their fortune in the fur trade, land speculation, and business. Engaging interpreters will take you on a journey through time as you tour the family's stunning 1871 Italianate-style mansion, one of the most authentically furnished Victorian houses in America. Built over 150 years ago in 1871, the home boasted the innovative modern conveniences of indoor plumbing and steam heat, making it comfortable as well as stylish. Today the mansion has been meticulously restored to its historic 1890s appearance, standing as a showcase of Victorian architecture and design. Because of this historic past, visiting Villa Louis offers rare access to earlier, lesser-



MEET OUR NEWEST NARM MEMBERS

Wisconsin Historical Society | H.H. Bennett Studio and Museum

Wisconsin Dells, Wisconsin

608-253-3523

hhbennettstudio.wisconsinhistory.org

Visiting H.H. Bennett Studio & Museum takes you back to a Wisconsin Dells that is very different from the one today. Like the photography process perfected by the studio and museum's namesake, the captivating story develops through stunning images and artifacts, engaging exhibits, and hands-on experiences for all ages. Walk through the museum and see the stunning landscape photographs that helped attract some of the first tourists to the area. Steer a riverboat down the Wisconsin River and explore Wisconsin Dells history, including the history of the Ho-Chunk Nation, on whose ancestral land the museum stands today.



The *only* museum search tool!

Discover more than 1600 museums across the US
... listed all in one place!

- ✓ Searchable by city or state
- ✓ Editor-selected featured exhibitions
- ✓ Links to each museum's own website for details
- ✓ *Art Things Considered* art-travel blog

Planning a trip?

Wherever you are or wherever you go in the US,
[ArtGeek](#) provides descriptive listings and links to

- art museums
- historic houses & artists' studios
- sculpture & botanical gardens

ArtGeek is good news for art-lovers who travel!

[ArtGeek](#) is good news for art museums and gardens, too!

Click [here](#) to learn if your institution is listed.

If it's not but should be, please [contact](#) us.

A Rising Tide Lifts All Boats: Andrea Limauro Presented by The Brinton Museum



[Image: Andrea Limauro, A Rising Tide Lifts All Boats (detail), 2018]

Andrea Limauro (b. 1976, Rome, Italy) is a visual artist and city planner whose work explores migration and migrant identity issues, nationalistic narratives, gun violence, climate change, and other social topics. Through his attentive and laborious process of screen printing and careful painting, Limauro's works bring into focus the looming nature of disasters due to the effects of climate change. Through the employment of striking color combinations, metal leaf, patterns, and minute details, the illusion to a dystopian future of the DC region entices the eye.

View the exhibition: <https://www.tephraica.org/exhibitions/a-rising-tide-lifts-all-boats>

The Brinton 101
Presented by The Brinton Museum



Gregory Packard, Buffalo Charm., Oil, 8 x 12.

"The Brinton 101," small works show features nearly 100 talented artists from throughout the U.S. This show includes artwork in a variety of media and genres ranging from traditional landscapes and wildlife subjects to contemporary abstract oils, drawings, and other media.

Working in a small format, artists were invited to submit up to three pieces, each with two-dimensional works in an 8" x 10" format and sculptures in a size of 12" x 8" x 10" or smaller. "The Brinton 101" show is popular with collectors and patrons for its affordability and quality.

View the exhibition: <https://thebrintonmuseum.org/event/the-brinton-101-small-works-show/>

Felt Experience Presented by Brattleboro Museum & Art Center (BMAC)



Liam Lee, "Untitled, Grey" Tapestry, 2021 (detail). Felted merino wool on mohair. 102 in. x 96 in. Courtesy of Patrick Parrish Gallery, New York. Installation at Brattleboro Museum & Art Center

Felt is an ancient material, predating woven cloth. Used for utilitarian purposes such as clothing, rugs, saddles, hut coverings, and even armor, it has also been employed for centuries for ceremonial and religious purposes.

This exhibition surveys the work of five artists, based in New York, Canada, and California, who are working in felt today: Marjolein Dallinga, Ruth Jeyaveeran, Melissa Joseph, Liam Lee, and Stephanie Metz. Their studio practices range from the exploration of the personally and universally nostalgic (Joseph), to a desire to connect our interior and exterior worlds (Lee), to a coaxing out of the potential aliveness of the material (Dallinga), to an investigation of time and memory within repetitive motions of making (Jeyaveeran), to a masterful merging of opposing qualities through curiosity and play (Metz).

— Katherine Gass Stowe and Sarah Freeman, Curators

View the exhibition here: <https://my.matterport.com/show/?m=FA3CrSJ6Gd2>

Why Use a Portal?

People use portals **to get links** to search, videos, user posts, purchases, history, resale items...

Google

amazon

ebay



WIKIPEDIA

TRIPinfo.com is a **portal used for logistics and details** that are needed when planning Leisure Group Trips.

YouTube

yahoo!

craigslist

Instagram



Common Denominators	Popular Portals	TRIPinfo.com
Pioneer	Some of the first commercial websites launched in 1996	One of the first commercial travel websites – launched in 1996
Purpose	Trusted website, loyal audiences	Trusted website, loyal audience
Design	Simple, clean, and largely unchanged since launch	Simple, clean, and largely unchanged since launch
Influence	Among the most popular global websites...hundreds of millions, even billions of monthly visits	Most popular website in its category...consistently 40,000-50,000 monthly visits
Pages per Visit, Time on Site	Higher than non-portal sites	Higher than non-portal sites
Bounce Rate	Lower than non-portal sites	Lower than non-portal sites
Privacy		User privacy protected. Acceptable Ads Certified: Strict global standards for unobtrusive, self-selected, tasteful ads

TRIPinfo
GROUP TRIPS START HERE

New and Rejoining members 12/15/2022 through 3/14/2023

ALABAMA, Auburn, Jule Collins Smith Museum at Auburn University, 334-844-1484

ARIZONA, Bisbee, Artemizia Foundation, 520-366-6281

ARKANSAS, Bentonville, Bentonville History Museum, 479-696-4210

CALIFORNIA, Laguna Hills, Moulton Museum, 949-868-7386

CALIFORNIA, Lincoln, Art League of Lincoln, 916-209-3499

COLORADO, Fort Collins, Fort Collins Museum of Discovery, 970-221-6738

CONNECTICUT, Greenwich, The Bruce Museum, 203-869-0376

FLORIDA, Punta Gorda, Military Heritage Museum, 941-575-9002

FLORIDA, Sebring, Sebring Historical Society | Charles F. Weigle House Museum & Archives, 863-471-2522

GEORGIA, Atlanta, Hammonds House Museum, 404-612-0481

GEORGIA, St. Simons Island, Glynn Visual Arts, 912-638-8770

GEORGIA, Savannah, Historic Savannah Foundation | Davenport House Museum, 912-236-8097

KANSAS, Manhattan, Riley County Historical Society & Museum, 785-565-6490

MAINE, Livermore, Washburn-Norlands Living History Center, 207-897-4366

MASSACHUSETTS, Hyannis, John F. Kennedy Hyannis Museum, 508-790-3077

MINNESOTA, Minneapolis, Norway House, 612-871-2211

MISSISSIPPI, Oxford, The University of Mississippi Museum and Historic Houses, 662-915-7073

NEW HAMPSHIRE, Canterbury, Canterbury Shaker Village, 603-783-9511

NEW JERSEY, Freehold, Jewish Heritage Museum of Monmouth County, 732-252-6990

NEW YORK, Binghamton, Roberson Museum and Science Center, 607-772-0660

NEW YORK, Jamestown, National Comedy Center | Lucille Ball Desi Arnaz Museum***, 716-484-2222

NEW YORK, New York, Cooper Hewitt Smithsonian Design Museum, 212-849-2950

NEW YORK, Williamson, Williamson-Pultneyville Historical Society, 315-589-9892



With traditional membership cards, you might be spending more than you think.

Find out what type of return on investment you can expect by offering your members digital membership cards.

Digital Membership ROI & Savings Calculator!

Check it out @ <https://cuseum.com/calculator>

DIGITAL MEMBERSHIP CARDS by  **CUSEUM**

New and Rejoining 12/15/2022 through 3/14/2023 (continued...)

OHIO, Akron, Cummings Center for the History of Psychology, 330-972-7285

OHIO, Findlay, Hancock Historical Museum, 419-423-4433

OREGON, The Dalles, The Dalles Art Center, 541-296-4759

SOUTH CAROLINA, Greenville, Greenville Center for Creative Arts, 864-696-2661

TEXAS, Graham, Old Post Office Museum & Art Center, 940-549-1470

TEXAS, Houston, Czech Center Museum Houston, 713-528-2060

TEXAS, Lake Jackson, Lake Jackson Historical Association, 979-297-1570

VERMONT, North Bennington, Park-McCullough Historic Governor's Mansion, 802-442-5441

VIRGINIA, Harrisonburg, Virginia Quilt Museum, 540-433-3818

WASHINGTON, Seattle, Wing Luke Museum of the Asian Pacific American Experience*, 206-623-5124

WISCONSIN, Baraboo, Wisconsin Historical Society | Circus World, 608-356-8341

WISCONSIN, Belmont, Wisconsin Historical Society | First Capitol, 608-987-2122

WISCONSIN, Cassville, Wisconsin Historical Society | Stonefield, 608-725-5210

WISCONSIN, Cedarburg, Cedarburg Art Museum, 262-377-6123

WISCONSIN, Eagle, Wisconsin Historical Society | Old World Wisconsin, 262-594-6301

WISCONSIN, Ephraim, Ephraim Historical Foundation & Historic Sites, 920-854-9688

Other updates

BERMUDA, Paget, Masterworks Museum of Bermuda Art, Change location, Devonshire

ARIZONA, Prescott, Mountain Artists Guild, Inc., Remove, Not renewing this year

CALIFORNIA, San Francisco, Yerba Buena Center for the Arts, Remove, Lost contact

FLORIDA, Bonita Springs, Everglades Wonder Gardens, Name change, The Wonder Gardens

FLORIDA, Mount Dora, Modernism Museum Mount Dora, Remove, Not renewing this year

ILLINOIS, Chicago, National Hellenic Museum, Remove, Lost contact

MARYLAND, Frederick, The Historical Society of Frederick County, Remove, Lost contact

NEW YORK, New York, China Institute, Remove, Lost contact

NEW YORK, Syracuse, Museum of Science & Technology, Add restriction, *NARM privileges may be restricted for concerts/lectures/special exhibitions and ticketed events.

VIRGINIA, Portsmouth, Portsmouth Museums: Children's Museum of Virginia, Courthouse Galleries, Naval Shipyard Museum and Lightship Portsmouth, Remove, Not renewing this year

