

**NA  
RM**

*North American Reciprocal  
Museum (NARM) Association®*

---

***Quarterly***  
**Summer 2023**



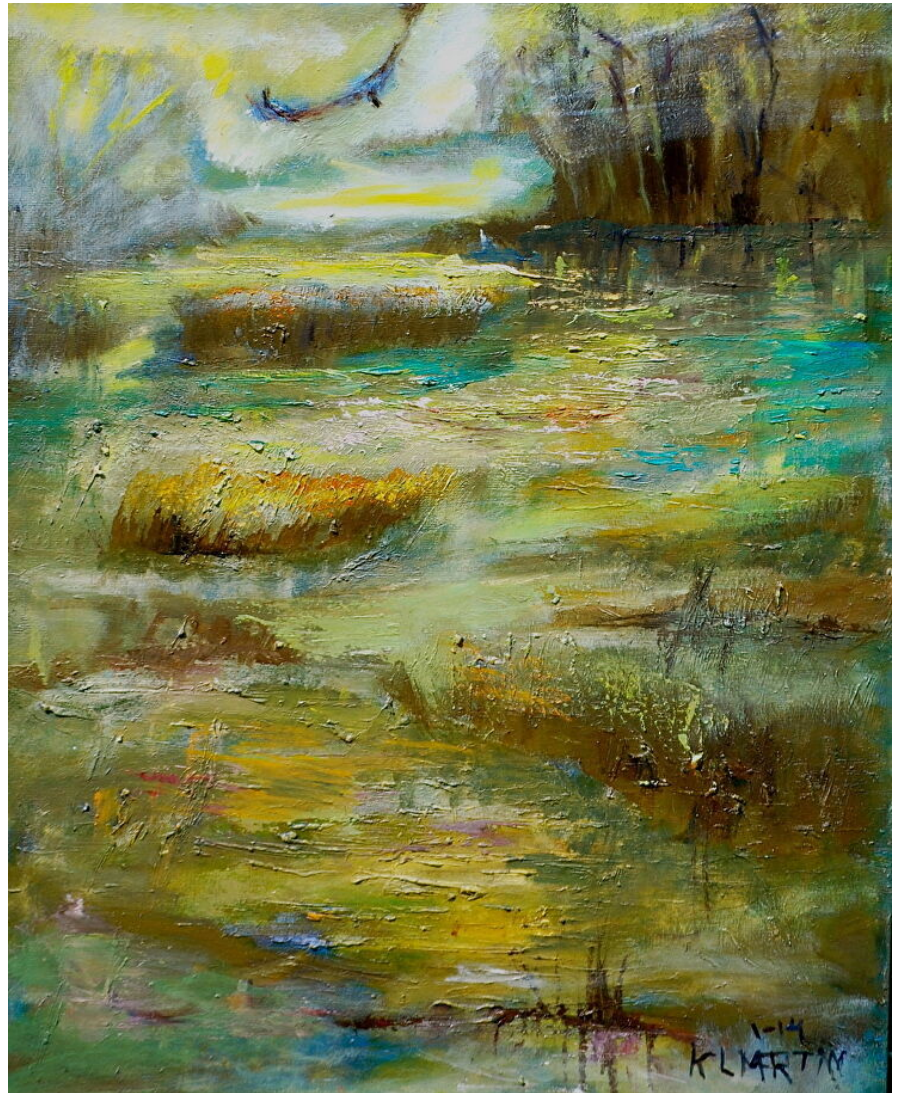


Featured Artist:  
Kenneth Martin

Kenneth Martin is a self-taught artist with a mission: teaching art to help others discover their own potential. He is an oil painter and portrait artist.

Martin's journey in art began when he was involved in a car accident in 1965 at 21 years old that left him a quadriplegic. After the accident, he began art therapy to help recover, but he really didn't see it that way. Martin actually found that painting added another dimension to who he was and after that experience he sought to help others find new dimensions and abilities that they have yet to explore.

Volunteering initially for the Veterans Administration, he now teaches free art classes for veterans at the Jepson Center and the Savannah Vet Center in Savannah, Georgia. With Martin's help, many veterans have been able to better transition back to civilian life through art.



Martin's paintings feature culturally significant themes: African American historical figures, education and the advancement of women, and self improvement. When Martin first came to Savannah he was fascinated by the eagles and their quiet, easy power, he says. He wanted to capture the Savannah marsh from their perspective: flying high and flying solo. The painting featured on the Summer Quarterly entitled "Solo" embodies his emotions and, he says, "causes me reflect, not just on the painting but why the impact of self expression is so extraordinarily necessary."

Contact information:  
[www.kennethmartinart.com](http://www.kennethmartinart.com)  
[klmart@aol.com](mailto:klmart@aol.com)

[Images used on front cover, page 2 and back cover: Kenneth Martin, Solo. Oil paint on canvas, 16 x 20 in.]

# Contents

Meet our Newest Members.....4

Virtual Programming.....13

Et cetera...

New and rejoining members.....17

Other updates.....19

The NARM Quarterly is a publication of the North American Reciprocal Museum (NARM) Association®, 2607 Woodruff Road, Ste E #412, Simpsonville, SC 29681. © North American Reciprocal Museum (NARM) Association®, all rights reserved in all media.



# MEET OUR NEWES



## River of Time Museum & Exploration Center

Fountain Hills, Arizona  
480-837-2612  
[www.riveroftime.center](http://www.riveroftime.center)

Located in the heart of beautiful Fountain Hills, Arizona, the River of Time Museum & Exploration Center is a distinctive non-profit organization with a focus on water conservation that's also an interactive, educational, family-fun destination. Explore how important water conservation is to life in the desert and learn how the history of this region and our present-day lives are connected. As you journey through our facility, take a tour, or enjoy an event or program, you will discover how desert dwellers – from the ancient Hohokam, the Yavapai, to early ranchers and modern-day settlers – have found ways to create an oasis in this area. We hope you'll leave us thinking about the steps you should take to preserve our most precious, life-giving resource – our water.

---

## Colusa County Arts Council

Colusa, California  
530-458-2222  
[colusa-county-arts.org](http://colusa-county-arts.org)

Established in 1991, The Colusa County Arts Council is a nonprofit offering county-wide arts programs that enrich our community, nurture artist development, provide educational arts programs, and give an artistic voice to the diverse cultures of Colusa County.



## Chabot Space & Science Center

Oakland, California  
510-336-7300  
[chabotspace.org](http://chabotspace.org)

Home of NASA Ames Visitor Center, Chabot Space & Science Center is a nonprofit science center that serves Oakland and the greater Bay Area with an Observatory, Planetarium, exhibition galleries and more.



# T NARM MEMBERS





# MEET OUR NEWES

## Fairfield Museum & History Center



Fairfield, Connecticut  
203-259-1598  
[www.fairfieldhistory.org](http://www.fairfieldhistory.org)

The Fairfield Museum and History Center believes in the power of history, art, and humanities to inspire the imagination, stimulate thought, and transform society. We connect people around the complex history of Fairfield, Connecticut, and its surrounding communities so that we may shape a more informed future together.

## Wethersfield Historical Society

Wethersfield, Connecticut  
860-529-7656  
[www.wethersfieldhistory.org](http://www.wethersfieldhistory.org)

Wethersfield Historical Society (WHS) is located in Connecticut's "Most Ancient Town". Old Wethersfield is the state's oldest and largest historic district, with a fascinating and diverse history that includes over 150 structures built before 1850. It is also one of Connecticut's first cultural districts, a vibrant, active, and inclusive community where the history that happens every day is just as important. WHS operates the Keeney Memorial Cultural Center which is the town's visitor center and includes the Wethersfield Museum with exhibitions of history and art as well as concerts, lectures, theatrical performances, and living history events.

The Wethersfield Historical Society also maintains the Hurlbut-Dunham House Museum and the Cove Warehouse Maritime Museum. The society's Old Academy Library contains an important archival collection and offers free assistance for genealogical and other researchers.



## Maui Ocean Center

Wailuku, Hawaii  
808-270-7000  
[mauioceancenter.com](http://mauioceancenter.com)

Since Maui Ocean Center opened in 1998, we have worked to protect Hawaii's remarkable marine life. We offer unparalleled encounters with amazing oceanic creatures, some existing only here in Hawaii. We care for one of the world's largest collections of live Pacific corals. Our exhibits and educational programs are designed to inspire Hawaii residents and visitors with a fresh appreciation for our surrounding sea and local culture.



# T NARM MEMBERS

## Basque Museum & Cultural Center



Boise, Idaho  
208-343-2671  
[basquemuseum.eus](http://basquemuseum.eus)

The Basque Museum & Cultural Center is located in the heart of the Basque Block in downtown Boise, Idaho. The mission is to preserve, promote, and perpetuate Basque history and culture. As the only Basque museum outside the Basque Country, it is an international leader in showcasing Basque and Basque-American history and culture and connecting people to Basque experiences around the world. The Basque Museum & Cultural Center empowers people of all backgrounds to explore points of connection and reflect on the common dignity of the human experience.

## South Side Community Art Center

Chicago, Illinois  
773-373-1026  
[www.sscartcenter.org](http://www.sscartcenter.org)

The South Side Community Art Center (SSCAC) is an historic arts organization located in Chicago's Bronzeville neighborhood whose mission is to conserve, preserve, and promote the legacy and future of African American art and artists while educating the community on the value of art and culture.



## Carnegie Museum of Montgomery County



Crawfordsville, Indiana  
765-362-4618  
[www.cdpl.lib.in.us/services/carnegie](http://www.cdpl.lib.in.us/services/carnegie)

The Carnegie Museum of Montgomery County is an interdisciplinary museum of history, science, and art and housed in Indiana's first Carnegie Library, a historic building which opened to the public in 1902; the museum opened in 2007.

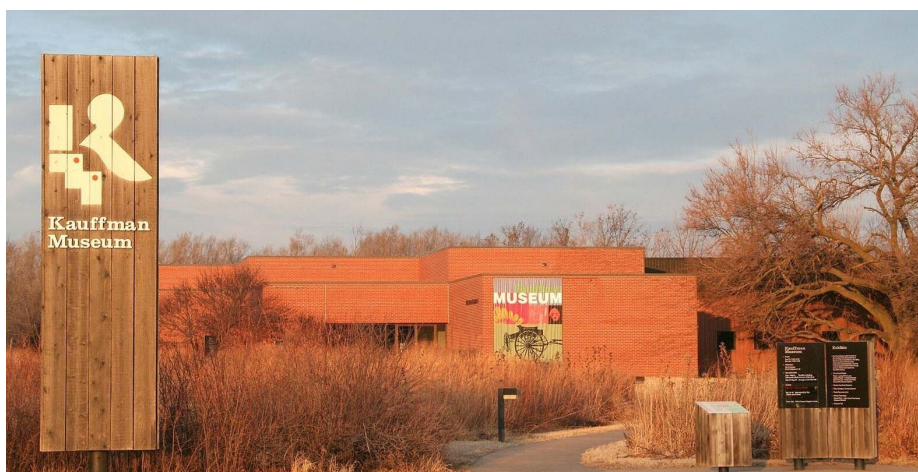
The Carnegie Museum has seven galleries on two floors with a variety of themes and rotating exhibits, focusing on the history of Montgomery County.



## Kauffman Museum at Bethel College

North Newton, Kansas  
316-283-1612  
[kauffmanmuseum.org](http://kauffmanmuseum.org)

Kauffman Museum's mission is to preserve the evolving story of central plains Mennonites, exploring their relationship to community, culture, and environment. This mission is achieved by: providing permanent and special exhibitions that interpret human and natural history; collecting artifacts from and stories about Mennonite people to illuminate universal themes of beliefs, identity, adaptation, and change; organizing educational programs for children, students, adults, and intergenerational audiences; and sharing museum resources with other communities through professional consultations, research, publication, and traveling exhibitions.



---

## New Orleans Pharmacy Museum

New Orleans, Louisiana  
504-565-8027  
[www.pharmacymuseum.org](http://www.pharmacymuseum.org)

The New Orleans Pharmacy Museum is located at the 1823 apothecary site of America's first licensed pharmacist, Louis J. Dufilho, Jr. It is a monument to the profession of pharmacy and the allied health professions.

The Museum's collection documents and illustrates the history of medicine during the 19th century. Tours of the museum offer visitors a better understanding of pharmacy, medicine and healthcare in the 19th century and the types of illnesses that prevailed. It also provides visitors with an opportunity to gain an appreciation of their common past and a civilizing sense of place, time and self that has proven vital to the welfare and advancement of all communities.



---

## Museum of Old Newbury

Newburyport, Massachusetts  
978-462-2681  
[www.newburyhistory.org](http://www.newburyhistory.org)

The Museum of Old Newbury is housed in the 1808 Cushing House, Newburyport's only National Historic Landmark. Against this historic backdrop, the stories of the Newburys unfold, including those of ship captains, craftsmen, politicians, and artists.

Visitors will see a mix of period rooms and gallery spaces that tell the stories of the past 300 years in the Newburys (consisting of Newburyport, Newbury, West Newbury, Byfield, and Plum Island). Many features, such as carpeting, light fixtures, balustrades, and faux-marbled floors, remain intact from the home's long occupancy by the Cushing family.





# T N A R M M E M B E R S

## Charles River Museum of Industry & Innovation

Waltham, Massachusetts  
781-893-5410  
[www.charlesrivermuseum.org](http://www.charlesrivermuseum.org)

The mission of the Charles River Museum of Industry & Innovation is to educate people about America's industrial history and to encourage and inspire future innovation. We do this by creating engaging experiences that highlight the many fascinating technical and business innovations that have taken place in this region and continue to change the world.



## Stuhr Museum



Grand Island, Nebraska  
308-385-5316  
[stuhrmuseum.org](http://stuhrmuseum.org)

Accredited by the American Alliance of Museums, Stuhr Museum gives visitors a chance to step back in time and explore the collective human experience of community building along the Platte River Valley. Stuhr Museum opened to the public in 1967 and has since become a destination for families and friends to come together through the shared interests of history, culture, and education.

## Walt Whitman Birthplace Association

Huntington Station, New York  
631-427-5240  
[www.waltwhitman.org](http://www.waltwhitman.org)

The Walt Whitman Birthplace Association, working in cooperation with NYS Office of Parks, Recreation & Historic Preservation, preserves the house where the poet was born and lived the early years of his life, and makes the poet's life and work accessible to all through guided tours, school programs, events and exhibits. The farm house was built by Walt's father circa 1810 and Walt was born here on May 31, 1819.





# MEET OUR NEWES

## The Clemente Soto Vélez Cultural and Educational Center

New York, New York  
212-260-4080  
[www.theclementecenter.org](http://www.theclementecenter.org)

The Clemente Soto Vélez Cultural & Educational Center Inc. is a Puerto Rican/Latinx multi-arts cultural institution that has demonstrated a broad-minded cultural vision and inclusive philosophy rooted in NYC's Lower East Side/Loisaida. While focused on the cultivation, presentation, and preservation of Puerto Rican and Latinx culture, we are equally committed to a multi-ethnic/international latitude, determined to operate in a polyphonic manner that provides affordable

working space and venues to artists, small arts organizations, emergent and independent community producers that reflect the cultural diversity of the LES and our City.



## Wilkes Art Gallery



North Wilkesboro, North Carolina  
336-667-2841  
[wilkesartgallery.org](http://wilkesartgallery.org)

Wilkes Art Gallery is a non-profit arts organization founded in 1962. Located in a 10,000 square-foot historic facility, the Gallery features over 3,500 square feet of exhibition space, an educational arts center with a complete ceramics studio, painting and drawing studios, two multi-purpose classrooms, and a gift shop featuring works from over 60 regional artisans. WAG year-round hosts exhibitions with free admission, offers a variety of classes, a summer arts camp, workshops, meet-the-artist events, community programming, and special outreach projects.

## Coos Art Museum

Coos Bay, Oregon  
541-267-3901  
[www.coosart.org](http://www.coosart.org)

Coos Art Museum serves as a cultural resource for Oregon's South Coast through exhibitions and educational programs that inspire appreciation and exploration of visual art. As a cultural center for the region and the only art museum on the entire Oregon Coast, the Museum is home to six exhibition galleries, totaling over 5,500 square feet of exhibition space. Exhibits at Coos Art Museum change frequently, between 18 and 25 exhibitions annually, and feature contemporary artists and works from its own 603-piece permanent collection of Northwest and contemporary art.

Education programs are offered year round. Topics range from drawing to art history, and also offer opportunities to develop artistic abilities. We offer beginner classes and workshops as well as intensive workshops and lectures for more artistically experienced adult audiences.





# T NARM MEMBERS

## Shofuso Japanese Cultural Center

Philadelphia, Pennsylvania  
215-878-5097  
[japanphilly.org](http://japanphilly.org)

Shofuso is a 1.2-acre Japanese garden recognized as the third-best Japanese garden in North America by Sukiya Living and named the "Best Hidden Tourist Attraction" by Philadelphia Magazine. Designed by architect Junzo Yoshimura, Shofuso was built in Japan in 1953 using traditional techniques and materials. It was shipped to New York and exhibited in the courtyard of the Museum of Modern Art in New York before moving to West Fairmount, Philadelphia in 1958. In 2007, international artist Hiroshi Senju, inspired by the garden's waterfall, donated 20 contemporary murals to Shofuso, which are permanently displayed inside the house.



## Shore History



Onancock, Virginia  
757-787-8012  
[shorehistory.org](http://shorehistory.org)

Shore History, is a 501(c)(3) nonprofit organization with the mission of collecting, preserving, and sharing Eastern Shore history and culture through exhibits, programming, collections, and archives. We own and operate Ker Place, a historic home museum, among a historic general store and centuries old cemetery.

Ker Place operates as a museum open to visitors and has trained volunteer docents giving guided tours of the interior and

exterior as well as various exhibits. The and the society's genealogy room, archives, and structure is used as museum exhibit space and the society's genealogy room, archives, and collections spaces. The smaller and newer section of the home is used as a gift shop with office space for staff. The house also serves as gallery space for important Eastern Shore artwork as well as for programs and temporary exhibits.

## Maymont

Richmond, Virginia  
804-525-9000  
[maymont.org](http://maymont.org)

Maymont is a quintessentially Richmond experience, designed to delight educate and inspire all ages. Open year-round, seven days a week, Maymont offers miles of paved walking paths across 100 acres of gently rolling riverside landscape, with a mature arboretum of native and exotic trees and landscaped Italian and Japanese-style gardens. Learn about native species on the Virginia Wildlife Trail or hand-feed friendly goats, sheep, and cows at Maymont Farm.







## The *only* museum search tool!

Discover more than 1600 museums across the US  
... listed all in one place!

- ✓ Searchable by city or state
- ✓ Editor-selected featured exhibitions
- ✓ Links to each museum's own website for details
- ✓ *Art Things Considered* art-travel blog

## Planning a trip?

Wherever you are or wherever you go in the US,  
ArtGeek provides descriptive listings and links to

- art museums
- historic houses & artists' studios
- sculpture & botanical gardens

## ArtGeek is good news for art-lovers who travel!

---

ArtGeek is good news for art museums and gardens, too!

Click [here](#) to learn if your institution is listed.

If it's not but should be, please [contact](#) us.



# VIRTUAL PROGRAMMING

## European Splendors: Highlights from the Kress Collection Presented by the Columbia Museum of Art



[Image: Pieter Claesz (Dutch), 1597-1661; Still Life, 1657; oil on oak panel]

"European Splendors" offers a chance to re-experience the CMA's Kress Collection — largely off view since 2017 — in a luxurious new way. Featuring an exciting arc of Italian art from the late medieval to the Baroque period shown alongside apothecary mortars and furniture pieces, this exhibition explores the renewed emphasis on the human condition and individualism within religious art and culminates in stunning examples of Dutch portraiture and still life. Italian landscapes by Bernardo Bellotto and Giovanni Paolo Pannini illustrate the impulse to bring a piece of history home from one's Grand Tour as well as the 18th-century mania for Greco-Roman ruins.

View the multi-media gallery here: <https://www.columbiamuseum.org/multimedia-gallery-tour-european-splendors>



## Volumes Presented by Berkshire Botanical Garden



[Image: Karlene Jean Kantner, Easter Dress.]

Berkshire Botanical Garden's first art exhibition of 2023 features works by the ceramic artist Karlene Jean Kantner. The show, "Volumes," will include nearly two dozen of her works.

Raised in Montana, a denizen of the outdoors, Kantner began her artistic undertakings as a child making fresh batches of hand-pressed, sunbaked "mud cookies" that looked good enough to eat. After earning her Bachelor of Fine Arts at the University of Montana and teaching art to children for several years, she came East with her partner, Chris Powell, a West Stockbridge native.

Once settled in the Berkshires, among her first acts was digging out a pit fire oven — that is to say, an open-air fire pit about a foot-and-a-half deep by four-feet wide in which she bakes much of her artwork, turning clay to ceramic. Her pit-firing is limited to Massachusetts' open-air brush-burning season (from Jan. 15 and May 1). The rest of the season, Kantner uses an electric kiln.

Last October, Kantner was wandering Berkshire Botanical Garden doing the very thing she has done since she was a child: She was at purposeful play in the natural world. With the help of the Garden's Director of Horticulture Eric Ruquist, she was collecting end-of-season stalks, seed pods, grasses, and amaranth, all to be incorporated into "Volumes."

View the exhibition here: <https://www.berkshirebotanical.org/volumes-karlene-jean-kantner>



## Gateway to Himalayan Art Presented by the Rubin Museum of Art



[Image: Mandala of Chakrasamvara, Tibet, 14th-15th century. Pigments on cloth. Mandala of Chakra.]

"Gateway to Himalayan Art" invites you to enter into the art and cultures of the greater Himalayan region—Indian, Nepalese, Bhutanese, Tibetan—and the interrelated Mongolian and Chinese traditions. Much of Himalayan art is informed by Buddhist, Hindu, and native religions, and images play a prominent role in cultural practices.

This exhibition introduces the fundamental visual language of Himalayan art, including the types of figures, gestures, and symbols and their meanings; the materials and technologies used to create works of art; and the living practices and intentions for commissioning these works in the context of secular and religious well-being.

View the exhibition here:

<https://projecthimalayanart.rubinmuseum.org/exhibition/>



# Why Use a Portal?

People use portals **to get links** to search, videos, user posts, purchases, history, resale items...

Google

amazon

ebay



WIKIPEDIA

**TRIPinfo.com** is a **portal used for logistics and details** that are needed when planning Leisure Group Trips.

YouTube

yahoo!

craigslist

Instagram



Common Denominators	Popular Portals	TRIPinfo.com
Pioneer	Some of the first commercial websites launched in 1996	One of the first commercial travel websites – launched in 1996
Purpose	Trusted website, loyal audiences	Trusted website, loyal audience
Design	Simple, clean, and largely unchanged since launch	Simple, clean, and largely unchanged since launch
Influence	Among the most popular global websites...hundreds of millions, even billions of monthly visits	Most popular website in its category...consistently 40,000-50,000 monthly visits
Pages per Visit, Time on Site	Higher than non-portal sites	Higher than non-portal sites
Bounce Rate	Lower than non-portal sites	Lower than non-portal sites
Privacy		User privacy protected. Acceptable Ads Certified: Strict global standards for unobtrusive, self-selected, tasteful ads

**TRIPinfo**  
GROUP TRIPS START HERE



## New and Rejoining members 3/15/2023 through 6/14/2023

ARIZONA, Fountain Hills, River of Time Museum & Exploration Center, 480-837-2612

CALIFORNIA, Colusa, Colusa County Arts Council, 530-458-2222

CALIFORNIA, Oakland, Chabot Space & Science Center, 510-336-7300

CALIFORNIA, San Francisco, Yerba Buena Center for the Arts, 415-978-2700

CONNECTICUT, Fairfield, Fairfield Museum & History Center, 203-259-1598

CONNECTICUT, Norwich, Slater Memorial Museum, 860-425-5563

CONNECTICUT, Wethersfield, Wethersfield Historical Society, 860-529-7656

HAWAII, Wailuku, Maui Ocean Center, 808-270-7000

IDAHO, Boise, Basque Museum & Cultural Center, 208-343-2671

ILLINOIS, Chicago, South Side Community Art Center, 773-373-1026

INDIANA, Crawfordsville, Carnegie Museum of Montgomery County, 765-362-4618

KANSAS, North Newton, Kauffman Museum at Bethel College, 316-283-1612

LOUISIANA, New Orleans, New Orleans Pharmacy Museum, 504-565-8027

MASSACHUSETTS, Newburyport, Museum of Old Newbury, 978-462-2681

MASSACHUSETTS, Waltham, Charles River Museum of Industry & Innovation, 781-893-5410

MISSOURI, Kansas City, Kansas City Museum, 816-513-0720

NEBRASKA, Grand Island, Stuhr Museum, 308-385-5316

NEW YORK, Huntington Station, Walt Whitman Birthplace Association, 631-427-5240

NEW YORK, New York, The Clemente Soto Vélaz Cultural and Educational Center, 212-260-4080

NORTH CAROLINA, North Wilkesboro, Wilkes Art Gallery, 336-667-2841

OREGON, Coos Bay, Coos Art Museum, 541-267-3901

PENNSYLVANIA, Philadelphia, Shofuso Japanese Cultural Center, 215-878-5097

SOUTH CAROLINA, Columbia, Historic Columbia, 803-252-1770

VIRGINIA, Onancock, Shore History, 757-787-8012

VIRGINIA, Richmond, Maymont, 804-525-9000





***With traditional membership cards, you might be spending more than you think.***

Find out what type of return on investment you can expect by offering your members digital membership cards.

**Digital Membership ROI & Savings Calculator!**

Check it out @ <https://cuseum.com/calculator>

**DIGITAL MEMBERSHIP CARDS** by  **CUSEUM**



### Other updates

CANADA ON, Toronto, The Bata Shoe Museum, Remove, Not renewing this year

MEXICO, Nuevo León, Monterrey, Museo de Arte Contemporáneo (MARCO), Remove, Lost contact

CALIFORNIA, El Segundo, Automobile Driving Museum, Update, Name change, The Zimmerman Automobile Driving Museum

CALIFORNIA, Long Beach, Earl Burns Miller Japanese Garden, Update, Phone number change, 562-985-8420

CALIFORNIA, Los Angeles, LA Plaza de Cultura y Artes, Remove, Temporarily suspending membership

CALIFORNIA, San Rafael, Marin History Museum, Update, Phone number change, 415-382-1182

LOUISIANA, Angola, The Angola Museum, Remove, Lost contact

MICHIGAN, Jackson, Ella Sharp Museum of Art History, Update, Phone number change, 517-787-2320

NEW JERSEY, Newark, The Newark Museum, Update, Name change, The Newark Museum of Art

NEW YORK, Bronx, The Bronx Museum of the Arts, Remove, Lost contact

NEW YORK, Ghent, Art Omi, Remove, Lost contact

NEW YORK, Woodstock, Woodstock Artists Association and Museum, Remove, Lost contact

SOUTH CAROLINA, Greenville, Greenville Center for Creative Arts, Update, Phone number change, 864-735-3948

TEXAS, Galveston, Galveston Railroad Museum, Remove, Not renewing this year

WASHINGTON, Tacoma, LeMay – America's Car Museum, Update, Remove restriction



