

**NA  
ARM**

*North American Reciprocal  
Museum (NARM) Association®*

---

**Quarterly**  
**Fall 2024**







### **Featured Artist: Peggy Blood**

Peggy Blood is a community artist, a member of the Telfair Friends of African American Art, a faculty member at Savannah State University, and the President of The National Alliance of Artists from Historical Black Colleges and Universities (NAAHBCU). Her work has been featured in China and India through the United States Department of State "Art in Embassies" program.

### **Artist's Statement:**

My love for nature is represented in all my paintings. Living in the south among beautiful trees, I am inspired by meandering creeks, majestic old trees, lush marsh lands, and vegetation trails. These are the foundations for my most recent paintings. The colorful brush markings start with delicate and strong strokes of color that mimic shapes of trees and vegetation.

Like people, trees have strong personalities and attitudes; some are bold, and overpowering, others are quiet, slim and/or graceful. Starting with a seed, small, fragile and innocent, a tree starts to develop and bloom. Loving life with determination, regardless of the challenges; they fight to thrive. Each changing season brings a promise for a new beginning. As the cycles of time past, a deterioration of the core changes its physical structure, purpose functionality and effectiveness within its environment.

As colors glide across the canvas mimicking shapes of trees, the ending results are unknown; my curiosity is heightening as the painting takes on a life of its own. The process may take months as I study and become acquainted with the formation of what is being created or revealed to me.

After a long period of study and examination the intensity of heavy impasto texture and colors start to develop, and the fragmentary passages begin to come to life. At this time, it has been transformed from a blank canvas into an episode that communicates beyond words I can articulate or convey. "Autum Spice," a prominent tree with colorful foliage and roots moving into the crisp season of fall, depicts the personalities of some of the trees in southern Georgia and represents my expressionistic interpretation of the life cycle of trees.

[https://art.state.gov/personnel/peggy\\_blood/](https://art.state.gov/personnel/peggy_blood/)  
<https://fineartamerica.com/profiles/peggy-blood>

[Images used on front cover, page 2 and back cover: Peggy Blood, Autum Spice, 2024]

# Contents

Meet our Newest Members.....4

Virtual Programming.....14

Et cetera...

New and rejoining members.....17

Other updates.....19



## Johnson Center for the Arts

Troy, Alabama  
334-670-2287  
jcatroy.org

The Johnson Center for the Arts is a cultural arts center and art museum that highlights the visual and performing arts experience, in both professional exposure and amateur education.



## Western Spirit: Scottsdale's Museum of the West



Scottsdale, Arizona  
480-686-9539  
westernspirit.org

Western Spirit: Scottsdale's Museum of the West is a premier cultural institution situated in Old Town Scottsdale, Arizona. Established in January 2015, the museum resides on the historic grounds of the Loloma Transit Station (N Marshall Way and E 1st St). With a sprawling two-story layout encompassing 43,000 square feet, the museum showcases the art, culture, and rich history spanning 19 states in the American West, Western Canada, and Mexico. Western Spirit boldly immerses guests in the unique story of the Greater Western region, illuminating the past to better shape our future.

## Washington County Historical Society

Fayetteville, Arkansas  
479-521-2970  
washcohistoricalsociety.org

The Washington County Historical Society (WCHS) was founded in 1951 with the mission to discover, preserve, and celebrate the history of Washington County, Arkansas, and to share that heritage with others. The WCHS maintains three local historic properties including Headquarters House Museum, built by the Tebbetts family in 1853 and acquired by the society in 1960. During the Civil War, it served as military headquarters at different times by both Union and Confederate forces. It now serves as WCHS headquarters and is operated as a period museum.





# T NARM MEMBERS





## Museo Italo Americano

San Francisco, California  
415-673-2200  
[museoitaloamericano.org](http://museoitaloamericano.org)

The Museo Italo Americano is a non-profit institution and the first museum in the United States devoted exclusively to Italian and Italian-American culture.

The mission of the Museo is twofold: to research, collect, and display works of Italian and Italian-American artists, and to promote educational programs for the appreciation of Italian art and culture, thereby preserving the heritage of Italian-Americans for future generations.



---

## Meriden Historical Society



Meriden, Connecticut  
203-639-1913  
[meridenhistoricalsociety.org](http://meridenhistoricalsociety.org)

The Meriden Historical Society Inc. is a membership supported, non-profit organization uniting those who are interested in the history of Meriden, Connecticut. The Society has two locations, The Andrews Homestead that chronicles the history of Meriden from colonial times to the present and the Meriden Museum & History Center, which has three galleries, a research center and a lecture hall. The Society offers outdoor tours, lectures, adult education, permanent and temporary exhibits as well as experienced researchers and community events.

---

## Lyme Academy of Fine Arts

Old Lyme, Connecticut  
860-434-5232  
[www.lymeacademy.edu](http://www.lymeacademy.edu)

With a faculty of internationally-recognized artists and scholars, the Lyme Academy of Fine Arts offers a comprehensive, multi-year program of disciplined study, integrating rigorous studio instruction in drawing and painting with anatomy, sculpture, and twenty-first century approaches to the histories of art. Our geography, located along the Connecticut River and in the heart of the celebrated Lyme Art Colony, and between the metropolitan centers of Boston and New York, is imbued with history, and remains an active site of progressive artists' congregation and camaraderie.





# T N A R M M E M B E R S

## Sarasota Music Archive

Sarasota, Florida  
941-861-1168  
sarasotamusicarchive.org

Founded in 1980, the Sarasota Music Archive has been saving and sharing all kinds of music and historical musical instruments and artifacts for free with the public. With an enviable collection of over 300,000 items, including vinyl records, historical sheet music, antique music books and scores, rare and unusual instruments, and much more, the archive hosts regular exhibitions through the community.



---

## Historical Society of Palm Beach County



West Palm Beach, Florida  
561-832-4164  
pbchistory.org

The Historical Society of Palm Beach County (HSPBC) is a nonprofit organization whose mission is to collect, preserve, and share the rich history and cultural heritage of Palm Beach County. The HSPBC maintains a large archive on the history of Palm Beach County, Florida, and the Caribbean. Through its archives, which includes four million photographic images, plus maps, newspapers, journals, periodicals, architectural drawings, and research files, the Society maintains an active research facility and documents the people and events that have shaped Palm Beach County.

---

## National Public Housing Museum

Chicago, Illinois  
773-245-1621  
www.nphm.org

The National Public Housing Museum (NPHM), incorporated in 2007, is the first U.S. cultural institution dedicated to the American public housing experience. Our mission is to preserve, promote, and propel the right to housing for all. NPHM uses art, historic artifacts, and oral histories to make housing issues understandable and actionable. We engage diverse voices to challenge discrimination and envision equitable futures. Located in the last remaining building of Chicago's historic Jane Addams Homes, NPHM is transforming it into a cultural hub, with completion set for mid-2024.





## Illinois Rock & Roll Museum on Route 66

Joliet, Illinois  
815-927-1540  
[www.RoadToRock.org](http://www.RoadToRock.org)

The Illinois Rock & Roll Museum on Route 66 is committed to preserving the rich history and contributions of musicians, performers and industry leaders who have impacted the music world and embodied the creative spirit of Illinois. We strive to inform, engage, and inspire our visitors through exhibits and programs that draw upon a diversity of cultures, history, and musical influence.



## Acadiana Center for the Arts

Lafayette, Louisiana  
337-233-7060  
[www.acadianacenterforthearts.org](http://www.acadianacenterforthearts.org)

Founded in 1975, Acadiana Center for the Arts (AcA) is a community-supported nonprofit organization that fosters art and culture in Acadiana. Since its founding, AcA has developed as a major force, shaping the future of public education and community development in South Louisiana.

## The Ipswich Museum

Ipswich, Massachusetts  
978-380-2656  
[www.ipswichmuseum.org](http://www.ipswichmuseum.org)

The Ipswich Museum was founded in 1890 as the Ipswich Museum Historical Society. Today, our collection reflects over 100 years of acquisition and preservation by these early visionaries. We continue to honor the original mission of the society to preserve Ipswich's social, cultural, and architectural history to make these treasures more accessible, relevant, and connected to our day-to-day lives.





# T N A R M M E M B E R S

## Historical Society of Old Yarmouth

Yarmouth Port, Massachusetts  
508-362-3021  
hsoy.org

The Historical Society of Old Yarmouth's vision is to explore, preserve & share our rich heritage so it isn't lost forever. With this in mind, the Society seeks to promote, preserve & present the history of the Town of Yarmouth, Massachusetts & its vicinity. Programs are aimed at improving the quality of life through educational & historical presentations, walks & special events. Historical buildings include a sea captain's home & museum, gate house, Quaker chapel, blacksmith shop & cobbler shop. Next to the Museum grows magnificent 120+ year old Weeping Beech tree, the largest on Cape Cod & part of 50 acres of nature trails belonging to the Society.



## Cranbrook Institute of Science



Bloomfield Hills, Michigan  
248-645-3209  
science.cranbrook.edu

Cranbrook Institute of Science is a natural history and science museum that fosters in its audiences a passion for understanding the world around them and a lifelong love of learning. Through its broadly based educational programs, its permanent and changing exhibits and its collections and research, the Institute develops a scientifically literate public able to cope with today's knowledge-based society. Moreover, Cranbrook Institute of Science generates the enthusiasm for learning about the natural world that will produce the scientists of tomorrow.

## New Hampshire Boat Museum

Moultonborough, New Hampshire  
603-569-4554  
www.nhbm.org

The New Hampshire Boat Museum (NHBM) is an experiential center that focuses on learning through doing by offering a plethora of hands-on programs and events.

NHBM was founded in 1992 by a group of antique and classic boating enthusiasts who wanted to share their love of New Hampshire's freshwater boating heritage. Today, the Museum's mission is to inspire an enduring connection, stewardship, and appreciation of the boating heritage of New Hampshire's fresh waterways through compelling exhibits, experiences, and educational programs.





## The Historical Society of Ocean Grove

Ocean Grove, New Jersey  
732-774-1869  
[historicalsocietyofoceangrove.org](http://historicalsocietyofoceangrove.org)

The beautiful seaside resort in Oak Grove, New Jersey, was established in 1869 for healthful recreation and spiritual growth and renewal. With the largest collection of Victorian style homes in the United States, Oak Grove is a National Historic District.

The Historical Society of Ocean Grove has pledged itself to preserve, document and encourage community interest in this National Historic District.



## Erie Canal Museum

Syracuse, New York  
315-471-0593  
[www.eriecanalmuseum.org](http://www.eriecanalmuseum.org)

The Erie Canal Museum opened its doors in 1962 housed in the last existing weighlock building in the United States. The National Register 1850 Syracuse Weighlock Building, a small Greek revival building located in the heart of Downtown Syracuse, was originally built for a purpose similar to weigh stations on highways today, collecting tolls on cargo in order to pay for construction and maintenance. The Museum is dedicated to sharing the history of the 363 mile waterway that originally opened in 1825, forever impacting the history of our nation.

## Ohio Glass Museum

Lancaster, Ohio  
740-687-0101  
[ohioglassmuseum.org](http://ohioglassmuseum.org)

The Ohio Glass Museum was established in 2002 to revere the importance of the glassmaking industry in the history of Lancaster and Fairfield County. Ohio has been home to numerous glass companies over the years due to an abundant supply of natural gas and sandstone in the area. For nearly 150 years, the glass industry has contributed to the industrial development, economic growth, and culture of the state of Ohio.





# T N A R M M E M B E R S

## TileWorks of Bucks County

Doylestown, Pennsylvania  
215-239-9797  
[www.thetileworks.org](http://www.thetileworks.org)

The Moravian Pottery and Tile Works is a working history museum, contemporary tiling and National Historic Landmark in Bucks County, Pennsylvania. Through artisanal tile making, engaging programs, and community building initiatives, TileWorks creates an environment for learning, exploration, and storytelling for all to experience.



## Houston Center For Photography



Houston, Texas  
713-529-4755  
[hconline.org](http://hconline.org)

Houston Center for Photography is an organization dedicated to the art of photography.

Starting in 1981 as a small visual artists' organization, HCP has grown to become an exemplary fine art organization. Our gallery features some of the finest works of contemporary photography. HCP also offers over 300 photography classes and workshops year-round.

## MidMountain

Natural Bridge Station, Virginia  
[midmountain.org](http://midmountain.org)

MidMountain is an arts collective and project in constant growth that believes in the power of people to reclaim space and caring for your neighbors. Our mission is to grow a resilient creative community by sharing time and natural space to develop the art of storytelling while literally nourishing our neighbors. We must imagine a better future where we celebrate differences that make us collectively stronger to grow that future.





# MEET OUR NEWEST NARM MEMBERS

## Edmonds Historical Museum



Edmonds, Washington  
425-774-0900  
[historicedmonds.org](http://historicedmonds.org)

The Edmonds Historical Museum is a private non-profit organization established by volunteers to collect, preserve and display the historical origins of the City of Edmonds and surrounding area. The Museum is located in Edmonds' 1910 Carnegie Library building. Its doors opened to the public in 1973 and now serves as a repository for community donations of historic items as well as a showcase of exhibits related to local and regional history.

## The Northwest Railway Museum

Snoqualmie, Washington  
425-888-3030  
[trainmuseum.org](http://trainmuseum.org)

The Northwest Railway Museum is our region's largest railway museum with 5.5 miles of historic track and campuses. The Museum exhibits, preserves, restores, and operates trains on which the public can experience the excitement of a working railway. The Museum's historic Snoqualmie Depot interprets how the railway changed the Snoqualmie Valley. The Train Shed is where many of the Museum's restored large artifacts are housed in addition to a growing number of smaller exhibits and displays interpreting how the railway changed everything.



## National Museum of Wildlife Art

Jackson, Wyoming  
307-733-5771  
[www.wildlifeart.org](http://www.wildlifeart.org)

The National Museum of Wildlife Art, founded in 1987, is a Jackson Hole museum holding more than 5,000 artworks representing wild animals from around the world. Featuring work by prominent artists such as Georgia O'Keeffe, Andy Warhol, Robert Kuhn, John James Audubon, and Carl Rungius, the Museum's unsurpassed permanent collection chronicles much of the history of wildlife in art from 2500 B.C. E. to the present.





# Your member engagement platform



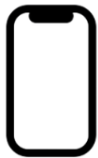
**Digital Membership**



**SMS / Text Messaging**



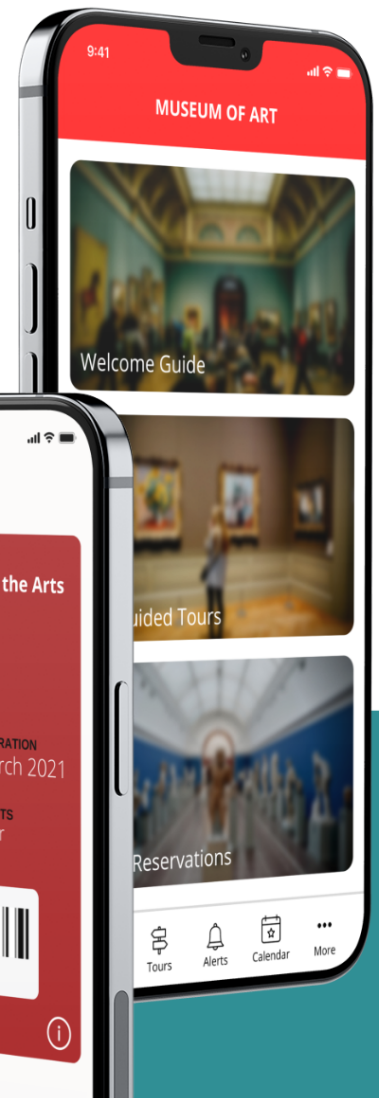
**Member Portal**



**Visitor Engagement**



**Loyalty & Rewards**



Hundreds of museums and cultural organizations leverage Cuseum's solutions to help you drive visitor, member, and patron engagement.

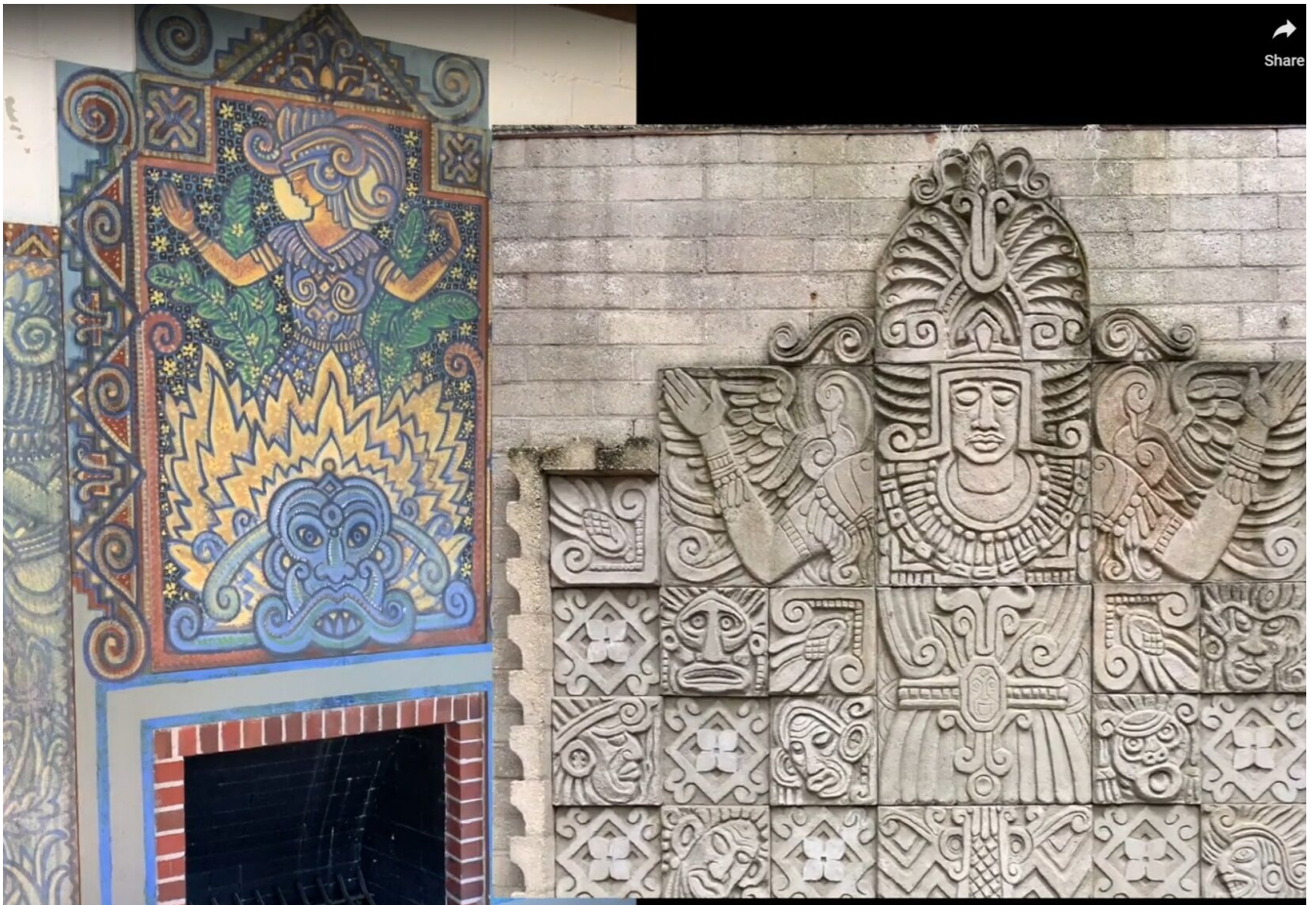
**Cuseum's solutions are compatible with leading CRMs & Systems including:**



**Ready to Learn More? Request A Demo @ [cuseum.com](https://cuseum.com)**



## The Exotic Realms of Jules André Smith Presented by Art & History Museums - Maitland



[Image: Video still from tour with Randall Webster. Courtesy Art & History Museums - Maitland.]

Step into the Maitland Art Center's galleries, virtually, with a tour of The Exotic Realms of Jules André Smith, by A&H's Director of Experiences, Randall Webster.

This exhibition explores Smith's extensive body of work, including paintings, watercolors, sculptures, concrete reliefs, theatre set designs, architectural drawings and architectural ornamentation. Through this exhibition, we hope to understand more about his 1937-1942 designs for the Research Studio, which he called "Espero," or Hope. Awarded the National Historic Landmark distinction for being one of the last remaining examples of Mayan Revival architecture in the southeastern United States, the Center features hundreds of relief carvings depicting Christian and Pagan gods and figures from a variety of religions and cultures. Exotic Realms invites you to step into these fantastical worlds, and learn more about the man who created them. Watch here: <https://artandhistory.org/exhibit-tour-the-exotic-realms-of-jules-andre-smith>



## Interpretations of the Landscape Presented by the Western Colorado Center for the Arts (The Art Center)



[Image: Mark Pettit, Dallas Divide.]

The beauty of nature has served as the inspiration for countless aesthetic interpretations of its majesty. Artists obsessed with its brilliance render its glory and capture its subtlety. In the hands of an artist, a brush moves like light; dancing on still water, mountains appear from bleached white canvas, and color fills the void that once inhabited an empty space.

View the stunning surroundings of The Art Center in this collection of works from the Permanent Collection depicting interpretations of the landscape online here: <https://www.youtube.com/watch?v=R7XzwvaJzxw>





## **The *only* museum search tool!**

Discover more than 1600 museums across the US  
... listed all in one place!

- ✓ Searchable by city or state
- ✓ Editor-selected featured exhibitions
- ✓ Links to each museum's own website for details
- ✓ *Art Things Considered* art-travel blog

## **Planning a trip?**

Wherever you are or wherever you go in the US,  
[ArtGeek](#) provides descriptive listings and links to

- art museums
- historic houses & artists' studios
- sculpture & botanical gardens

## ***ArtGeek* is good news for art-lovers who travel!**

---

[ArtGeek](#) is good news for art museums and gardens, too!

Click [here](#) to learn if your institution is listed.

If it's not but should be, please [contact](#) us.



## **New and Rejoining members 6/15/2024 through 9/14/2024**

---

ARIZONA, Scottsdale, Western Spirit: Scottsdale's Museum of the West, 480-686-9539

ARKANSAS, Fayetteville, Washington County Historical Society, 479-521-2970

CALIFORNIA, Los Angeles, LA Plaza de Cultura y Artes, 213-542-6276

CALIFORNIA, San Francisco, Museo Italo Americano, 415-673-2200

CONNECTICUT, Meriden, Meriden Historical Society, 203-639-1913

CONNECTICUT, Old Lyme, Lyme Academy of Fine Arts, 860-434-5232

FLORIDA, Sarasota, Sarasota Music Archive, 941-861-1168

FLORIDA, West Palm Beach, Historical Society of Palm Beach County\*, 561-832-4164

GEORGIA, Savannah, Andrew Low House Museum/NSCDA-GA, 912-233-6854

ILLINOIS, Chicago, National Public Housing Museum\*\*, 773-245-1621

ILLINOIS, Joliet, Illinois Rock & Roll Museum on Route 66, 815-927-1540

LOUISIANA, Lafayette, Acadiana Center for the Arts, 337-233-7060

MASSACHUSETTS, Ipswich, The Ipswich Museum, 978-380-2656

MASSACHUSETTS, Yarmouth Port, Historical Society of Old Yarmouth, 508-362-3021

MICHIGAN, Bloomfield Hills, Cranbrook Institute of Science, 248-645-3209

MONTANA, Lewistown, Lewistown Art Center, 406-535-8278

NEW HAMPSHIRE, Moultonborough, New Hampshire Boat Museum, 603-569-4554

NEW JERSEY, Ocean Grove, The Historical Society of Ocean Grove, 732-774-1869

NEW YORK, Syracuse, Erie Canal Museum, 315-471-0593

OHIO, Lancaster, Ohio Glass Museum, 740-687-0101

PENNSYLVANIA, Doylestown, TileWorks of Bucks County, 215-239-9797

TEXAS, Houston, Houston Center for Photography, 713-529-4755

VIRGINIA, Natural Bridge Station, MidMountain

WASHINGTON, Edmonds, Edmonds Historical Museum, 425-774-0900

WASHINGTON, Snoqualmie, The Northwest Railway Museum, 425-888-3030

WYOMING, Jackson, National Museum of Wildlife Art, 307-733-5771



# Why Use a Portal?

People use portals **to get links** to search, videos, user posts, purchases, history, resale items...

Google

amazon

ebay



WIKIPEDIA

**TRIPinfo.com** is a **portal used for logistics and details** that are needed when planning Leisure Group Trips.

YouTube

yahoo!

craigslist

Instagram



Common Denominators	Popular Portals	TRIPinfo.com
<b>Pioneer</b>	Some of the first commercial websites launched in 1996	One of the first commercial travel websites – launched in 1996
<b>Purpose</b>	Trusted website, loyal audiences	Trusted website, loyal audience
<b>Design</b>	Simple, clean, and largely unchanged since launch	Simple, clean, and largely unchanged since launch
<b>Influence</b>	Among the most popular global websites...hundreds of millions, even billions of monthly visits	Most popular website in its category...consistently 40,000-50,000 monthly visits
<b>Pages per Visit, Time on Site</b>	Higher than non-portal sites	Higher than non-portal sites
<b>Bounce Rate</b>	Lower than non-portal sites	Lower than non-portal sites
<b>Privacy</b>		User privacy protected. Acceptable Ads Certified: Strict global standards for unobtrusive, self-selected, tasteful ads

**TRIPinfo**  
GROUP TRIPS START HERE



## Other updates

---

- ARKANSAS, Bentonville, Bentonville History Museum, Remove, Lost contact
- CALIFORNIA, Encinitas, The Institute of Contemporary Art, San Diego (North Campus), Remove, Lost contact
- CALIFORNIA, Sacramento, Crocker Art Museum\*^, Update, Change restrictions, \*NARM privileges may be restricted for concerts/lectures/special exhibitions and ticketed events. ^NARM privileges are not extended to members of institutions that restrict to this institution.
- CALIFORNIA, San Diego, The Institute of Contemporary Art, San Diego (Central Campus), Remove, Lost contact
- CALIFORNIA, Woodland, YoloArts/Yolo County Arts Council, Remove, Lost contact
- COLORADO, Estes Park, Stanley Home Museum & Education Center, Remove, Not renewing this year
- CONNECTICUT, Old Lyme, Florence Griswold Museum\*, Update, Change name to FloGris Museum\*
- DELAWARE, Milford, Milford Museum, Remove, Lost contact
- DistC, Washington, Chinese American Museum D.C., Remove, Lost contact
- FLORIDA, Bonita Springs, The Wonder Gardens, Remove, Lost contact
- FLORIDA, Lakeland, Polk Museum of Art, Update, Change name to Ashley Gibson Barnett Museum of Art
- GEORGIA, Gainesville, Quinlan Visual Arts Center, Remove, Not renewing this year
- ILLINOIS, Chicago, Pritzker Military Museum & Library, Update, Moved, Location change to Kenosha, Wisconsin
- KANSAS, Wichita, Ulrich Museum of Art, Remove, Not renewing this year
- KENTUCKY, Franklin, Gallery on the Square, Remove, Does not have reciprocal benefits
- KENTUCKY, Louisville, Asia Institute - Crane House, Remove, Lost contact
- MASSACHUSETTS, Lenox, The Mount\* (dba Edith Wharton Restoration Inc.), Remove, Lost contact
- NEW YORK, Huntington Station, Walt Whitman Birthplace Association, Remove, Lost contact
- OKLAHOMA, Oklahoma City, National Cowboy & Western Heritage Museum\*, Update, Add restriction, \*NARM privileges may be restricted for concerts/lectures/special exhibitions and ticketed events.
- SOUTH DAKOTA, Mitchell, Mitchell Prehistoric Indian Village, Remove, Lost contact
- TEXAS, Austin, Bullock Texas State History Museum, Update, Remove restriction
- TEXAS, Dallas, Old City Park| Dallas Heritage Village, Remove, Lost contact
- TEXAS, Houston, Houston Maritime Center, Remove, Lost contact
- VIRGINIA, Virginia Beach, Atlantic Wildfowl Heritage Museum, Remove, Lost contact



