

**NA
ARM**

*North American Reciprocal
Museum (NARM) Association®*

Quarterly
Fall 2025





[Images: (Left) My Rendition. Oil on canvas. 23.60 x 23.60 in. (Right) Cassis Harbor. Oil on canvas, 117.48 x 118.74 cm.]

Featured Artist: Alice Williams

Alice Williams paints, laughs, gardens, and lives with an ease and awakened wonder which infuse the very fibers of her canvas and inspire every stroke of her brush. Taking in an Alice Williams painting is a meditation: transporting, comforting, inspiring, and revealing. Luring one in ever more deeply with its color play and thoughtful composition, her rhythmic strokes delightfully blur the sharp edges of reality, and take the viewer into a lovely, timeless, secret world they never even knew they were missing.

There is no mistaking an Alice Williams painting. Post-impressionist in style for over 50 years, she makes it look easy, but that perfectly unfinished, relaxed precision is the result of a lifelong love affair with the arts and dedicated study with many of the great American artists of our time. In 1992 she began to share her knowledge and expertise by offering workshops and classes both in the United States and Provence.

Also a master gardener, Alice began to apply what she had learned from painting garden scenes. "Grass is negative space, color is positive. I am still amazed and in wonder when I think about it." Her passion and sheer joy for creating legendary gardens matches her love of painting. Always drawing inspiration from her surroundings, she took notice of the enchanting gardens of England when her husband, Don, was relocated there through his job with IBM for two and a half years in 1985. Alice's homes and gardens have been the subjects of at least 14 articles in major publications.

As far as education is concerned, Alice believes if you want to be the best you must study from the best. "I have been extremely fortunate to have had the opportunity of studying from some of the very best artists in the U.S. today," says Alice.

Williams has an extensive list of Galleries showing her works and is featured in numerous Public and Museum Collections which you can find listed on her website. In addition, she was recently featured in a **PEOPLE** Magazine Exclusive: <https://people.com/granddaughter-shares-viral-tiktok-of-her-artist-grandma-exclusive>

Website: <https://alicewilliams.com> **Instagram:** <https://www.instagram.com/alicewilliams.artist/>

For more information, commission of a painting, or to schedule a time to meet with Alice, contact Allison Hull at allison@alicewilliams.com or call/text at 917.428.3649

Contents

Meet our Newest Members.....	4
Virtual Programming.....	17
Et cetera...	
New and rejoining members.....	21
Other updates.....	23

The NARM Quarterly is a publication of the North American Reciprocal Museum (NARM) Association®, 2607 Woodruff Road, Ste E #412, Simpsonville, SC 29681. © North American Reciprocal Museum (NARM) Association®, all rights reserved in all media.

Deer Valley Petroglyph Preserve

Phoenix Arizona
623-582-8007
deervalley.asu.edu

The Deer Valley Petroglyph Preserve is a 47-acre archaeological and nature preserve in north Phoenix. The site features over 1,500 petroglyphs, created between 500 and 5,000 years ago by three cultural traditions: the Western Archaic, the Patayan, and the Ancestral Sonoran Desert People (Hohokam). Each group left its mark as it passed through the area. The Preserve is managed by Arizona State University in partnership with the Flood Control District of Maricopa County, which owns the land and operates a flood control dam on site. Visitors can explore a quarter-mile desert trail that winds past petroglyph-covered boulders and native Sonoran plants.

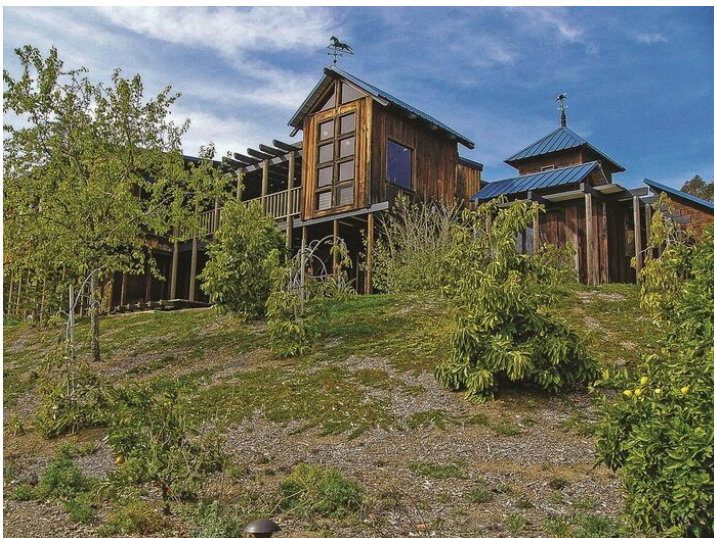


California Center for the Arts | Escondido Foundation

Escondido, California
619-836-4958
www.ccaemuseum.org

The California Center for the Arts Museum serves to foster meaningful engagement with contemporary art and visual culture from the Californias. Through the presentation of exhibitions and events, we invite communities of our region to explore the interconnections between disciplines, periods, and cultures, and to imagine the world in new ways.

Sam and Alfreda Maloof Foundation for Arts and Crafts



Rancho Cucamonga, California
909-980-0412
www.malooffoundation.org

Sam and Alfreda Maloof Foundation for Arts and Crafts - Sam Maloof and Alfreda Ward Maloof established America's foremost 20th century woodworking studio, famous for sculpted, hand-crafted furniture that came to be treasured by collectors and museums across the nation. Today, the Maloof's story of artful living is told in tours, exhibitions, workshops and hands-on-artmaking experiences that inspire visitors from around the world. The Maloof home is a California treasure, listed in the National Register and part of the Historic Artists' Home and Studios consortium established by the National Trust.

ST NARM MEMBERS



Sharon Historical Society & Museum



Sharon, Connecticut
860-364-5688
sharonhist.org

The Sharon Historical Society & Museum collects, preserves, and shares the stories of Sharon. The Society was founded on January 20, 1911 by twenty-one residents of Sharon, CT whose objective was “to collect and preserve in some suitable place such articles as may tend to illustrate the life and history of the early settlers of this region, and to create and foster an interest in local history and tradition.” Since 1911, the Society has developed into a museum with public programs and collections of historical artifacts.

MoCA\CT | Museum of Contemporary Art Connecticut

Westport, Connecticut
203-222-7070
mocact.org

MoCA\CT- The Museum of Contemporary Art Connecticut-creates thought-provoking art exhibitions, performing arts experiences, and arts education opportunities to foster creativity and community to support all who wish to engage with the arts.



Conservancy of Southwest Florida



Naples, Florida
239-262-0304
conservancy.org

The Conservancy of Southwest Florida, founded in 1964, is a nonprofit organization dedicated to protecting our region’s water, land, wildlife, and future. Through a combination of environmental policy and advocacy, science and research, wildlife rehabilitation, and environmental education, we work to safeguard the unique ecosystems of Southwest Florida. Our mission

—“to protect Southwest Florida’s water, land, wildlife, and future”—guides all that we do as we respond to the growing challenges of development, habitat loss, and climate impacts. The Conservancy is committed to ensuring a healthy, sustainable environment for generations to come.

Holocaust Museum & Cohen Education Center



Naples, Florida
239-263-9200
hmcec.org

Our Mission is to teach the lessons of the Holocaust to inspire action against hatred and to promote mutual respect. We do this by displaying artifacts and photographs which tell the individual stories within the larger history of the Holocaust, providing Educational programs and activities to students at all grade levels, and presenting general public programs and exhibits that

highlight elements of our collection and stories related to the Holocaust and other genocides. To our knowledge, we are the only Holocaust museum in the country that was started in a middle school classroom.

Guana Tolomato Matanzas National Estuarine Research Reserve Learning Center

Ponte Vedra Beach, Florida
904-380-8610
gtmnerr.org

Guana Tolomato Matanzas National Estuarine Research Reserve (GTMNERR) Learning Center offers an immersive introduction to the dynamic coastal ecosystems of Northeast Florida. Located within one of the most ecologically diverse estuarine reserves in the country, the center features interactive exhibits, educational displays, and hands-on learning opportunities focused on the natural and cultural history of the Guana Tolomato Matanzas watershed.

Explore topics such as estuary ecology, wildlife habitats, coastal resilience, and conservation science. The Learning Center is a hub for environmental education, offering programs for students, teachers, families, and the general public.



offer programs for students, teachers, families, and the general public.



Colquitt County Arts Council

Moultrie, Georgia
229-985-1922
www.moultriearts.org

The Arts Center of Moultrie is a creative cultural resource that makes quality visual and performing art available to a diverse population. The Arts Center provides engaging arts education for children and adults, acts as a steward of permanent collections, and maintains a landmark facility that enriches the whole community.



Tarble Arts Center

Charleston, Illinois
217-581-2787
www.eiu.edu/tarble

The Tarble Arts Center is the teaching museum on the campus of Eastern Illinois University (EIU). With an artist-centered approach, the Tarble presents an annual program of rotating exhibitions that provide experiential encounters with art of international significance and local relevance. An onsite Collection Lab, Design Lab, and Education Lab are hubs for transdisciplinary activity, positioning art as a primary tool for research, advancing knowledge, and interpreting the world we live in. The mission of the Tarble Arts Center is to engender appreciation for and involvement in the arts, especially the visual arts, as a major arts resource for the people of east-central Illinois and the EIU campus community.

Renaissance Society at the University of Chicago

Chicago, Illinois
773-702-8670
renaissancesociety.org

Founded in 1915, the Renaissance Society is a non-collecting museum that presents contemporary art exhibitions, performances, events, and publications. Since its inception, the Renaissance Society's mission has been to work with artists on their most ambitious projects, together pushing the boundaries of what art can be and what it can do.



Art Barn School of Art

Valparaiso, Indiana
219-462-9009
www.artbarnschool.org

Founded in 1969 by artist and educator Jan Sullivan, the Art Barn School of Art is a creative haven set on nearly 70 acres of tranquil woodlands and pastures. Originally a small farm with a big vision, it has grown into a nature-based retreat that welcomes individuals of all ages and artistic abilities to explore, experiment, and grow through the arts.

Art Barn offers a diverse range of programs, including adult & youth classes, various workshops, and rotating exhibitions of regional art, fostering creativity, diversity, and connection. In Spring, Art Barn's walls fill floor to ceiling with artwork from all over the country for the annual Juried Art Exhibition. In September, Art Barn hosts its annual outdoor Art Blitz which engages thousands of visitors in art-making, demonstrations and fun for the whole family.



fostering creativity, diversity, and connection. In Spring, Art Barn's walls fill floor to ceiling with artwork from all over the country for the annual Juried Art Exhibition. In September, Art Barn hosts its annual outdoor Art Blitz which engages thousands of visitors in art-making, demonstrations and fun for the whole family.

Pitot House

New Orleans, Louisiana
504-482-0312
www.pitohouse.org/home

Managed by Louisiana Landmarks Society, the Pitot House shares Louisiana history with the public through preservation of this circa 1799 West Indies-style home and gardens, guided tours and educational programs.



Twin Steeples Creative Arts



Ponchatoula, Louisiana
985-265-8411
www.twinsteeple.org

Twin Steeples Creative Arts Center (TSCAC) is a nonprofit organization dedicated to providing a welcoming and inclusive space for artists of all kinds. Our mission is to foster artistic expression, connect communities, and celebrate creativity in all its forms. Our Vision is to inspire creativity, exploration, and appreciation of the arts while fostering

creativity in all its forms. Our Vision is to inspire creativity, exploration, and appreciation of the arts while fostering meaningful connections within our community. TSCAC has a gallery space showcasing local artists year-round, as well as events, classes, and workshops.

Jewish Museum of Maryland

Baltimore, Maryland
410-732-6400
jewishmuseummd.org



The Jewish Museum of Maryland is a participatory museum and cultural hub in Baltimore. Rooted in Jewish history, culture, and creativity, we spark connection and curiosity while exploring ideas for the future. We invite you to learn, connect, and imagine with us.

George A. Spiva Center for the Arts

Joplin, Missouri
417-623-0183
spivaarts.org

George A. Spiva Center for the Arts has been celebrating the creative experience for more than 75 years! The premier art gallery for the Four-state Region, Spiva boasts four galleries inside the beautiful Harry M. Cornell Arts & Entertainment Complex and offers classes and events to the public throughout the year.

The mission of Spiva is to celebrate the creative experience. Our vision is to be a community catalyst, joining culture, community, education, business, and and the arts as one, endeavoring to be a model for art centers across the nation.



Strategic Air Command and Aerospace Museum



Ashland, Nebraska
402-944-3100
www.sacmuseum.org

The Strategic Air Command and Aerospace Museum was built as a state-of-the-art center for housing the aircraft and artifacts used by the Strategic Air Command during the Cold War. With careful restoration efforts and impressive displays, we've been sharing this critical time in our history with the next generations for 25 years.

and space innovation. The museum remains a significant historical resource while also using its collection to ignite the imagination of tomorrow's scientists and explorers. Specializing in science and space exploration, technological innovation and a genuine commitment to sharing and preserving our nation's history, we're uniting our past and future to secure our spot as the Midwest's premier museum and science center.

Now, we aim to honor our heritage while looking toward the bright future of air

New England Ski Museum | Franconia

Franconia, New Hampshire
603-823-7177
newenglandskimuseum.org

The New England Ski Museum is dedicated to preserving and sharing the rich history of skiing and the legacy of the 10th Mountain Division. With two locations in New Hampshire, we welcome over 20,000 visitors each year to explore exhibits, artifacts, and art that showcase skiing's deep impact on the culture and economy of New England.



Our museums offer engaging displays, educational programs, and special events that inspire, educate, and entertain visitors of all ages. Our world-class collection—one of the top five ski-related archives globally—includes rare equipment, photographs, films, and memorabilia that bring the story of skiing to life.

Historical Society of Cheshire County

Keene, New Hampshire
603-352-1895
hscnh.org

The Historical Society of Cheshire County serves the city of Keene and 23 other towns in southwestern New Hampshire. The Historical Society of Cheshire County serves as a contemporary hub for people to connect to history, art, culture, and the environment through their own lens and personal experience. The Society delivers about 150 programs each year that connect people with their own local history stories. With a staff of three full-time employees, three part-time employees, and 100 volunteers, the Society serves 15-20,000 people per year. The Historical Society owns three historic buildings on Keene's Main Street: its headquarters the Ball Mansion (1870), the Wyman Tavern (1762) historic house museum, and the Bruder House (1839), which is a venue for programs and education. The headquarters have a research library, an exhibit hall, and a museum store.



New England Ski Museum | North Conway



North Conway, New Hampshire
603-730-5044
skimuseum.org

The New England Ski Museum is dedicated to preserving and sharing the rich history of skiing and the legacy of the 10th Mountain Division. With two locations in New Hampshire, we welcome over 20,000 visitors each year to explore exhibits, artifacts, and art that showcase skiing's deep impact on the culture and economy of New England.

Our museums offer engaging displays, educational programs, and special events that inspire, educate, and entertain visitors of all ages. Our world-class collection—one of the top five ski-related archives globally—includes rare equipment, photographs, films, and memorabilia that bring the story of skiing to life.

Millicent Rogers Museum

El Prado, New Mexico
575-758-2462
millicentrogers.org

The Millicent Rogers museum is located in a traditional hacienda style building, creating a unique setting for a stellar collection of Southwest arts including pottery, Southwest jewelry, textiles, and Hispanic devotional arts. Highlights of the collections include Maria Martinez pottery, regional colcha embroideries, and a large portion of Millicent's jewelry collection. The museum was founded in 1956 following Millicent's death by her son, Paul Peralta Ramos, with 800 objects of Millicent's serving as the core of the collection. Having now grown to over 7000 objects, the Millicent Rogers Museum is a testament to the creativity and broad appeal of Southwest arts, architecture, and cultural celebration.



Wingfield Heritage House Museum



Ruidoso, New Mexico
575-257-5559
wingfieldmuseum.com

Built in the 1920s by Ike and Lula Wingfield, this historic home was once a family residence for three generations before becoming a hub for local businesses. Today, the house has been restored to its original footprint and transformed into the Wingfield Heritage House Museum, telling the story of Ruidoso's past, from its earliest residents to its growth into a thriving town. Inside, you'll find exhibits on the Wingfield family, ancient cultures, and Ruidoso's journey through the years. Each room offers a glimpse into the past, making it easy to see how the town evolved into the mountain destination it is today.

National Bottle Museum

Ballston Spa, New York
518-885-7589
nationalbottlemuseum.org

The National Bottle Museum® was created to preserve, research, and exhibit bottles and objects related to bottle making. Visitors can view displays of bottles and glassmaking tools, learn about the local bottle history, and the history of bottle production. Bottle collectors and students also have access to an extensive research library. The Museum also houses the JRM Artists' Space, an art gallery for artists of varied mediums to showcase and promote their art. The National Bottle Museum offers educational presentations, on and off site, to historical societies, social groups, schools,



National Women's Hall of Fame



Seneca Falls, New York
315-568-8060
womenofthehall.org

Founded in 1969, the National Women's Hall of Fame is the nation's first and oldest nonprofit organization and museum dedicated to celebrating the achievements of distinguished American women. Located in the historic Seneca Knitting Mill on the banks of the Cayuga-Seneca Canal, the Hall is a vibrant space for education, inspiration, and action.

We are committed to engaging every generation in honoring women whose courage, vision, and leadership have transformed our world. Through storytelling, education, and advocacy, the Hall elevates women's voices, empowers changemakers, and advances gender equity.

NARM MEMBERS

Hart Cluett Museum of Historic Rensselaer County



Troy, New York
518-272-7232
www.hartcluett.org

The Hart Cluett Museum of Historic Rensselaer County is a dynamic not-for-profit educational organization established in 1927 to connect local history and heritage with contemporary life. We enrich the present and advocate for the future by bringing the region's past to life, recognizing every face and every story. In pursuit of this mission, we collect, preserve, study, interpret and make accessible to the public our diverse permanent objects and archival collections as well as offering educational programs to inspire public enthusiasm for the nationally significant history of Rensselaer

County. Situated in the downtown Second Street Historic District, the museum fulfills its mission from three adjacent 19th century townhouses — the historic and architecturally significant 1827 Hart-Cluett House and Carriage House which serves as a house museum, and the Carr Building, which houses program space including exhibition galleries and research library.

Firelands Association for the Visual Arts

Oberlin, Ohio
440-774-7158
www.favagallery.org

Firelands Association for the Visual Arts (FAVA) is a nonprofit community art center located in Oberlin, Ohio. Founded in 1979, FAVA presents rotating exhibitions featuring local, regional, and national artists; offers art classes and workshops for youth and adults; and hosts public events and outreach programs that promote creativity and connection. Housed in the historic New Union Center for the Arts, FAVA is committed to accessibility, inclusion, and excellence in the visual arts.



Oklahoma Historical Society | Fort Towson Historic Site

Fort Towson, Oklahoma
580-873-2634
www.okhistory.org/sites/forttowson

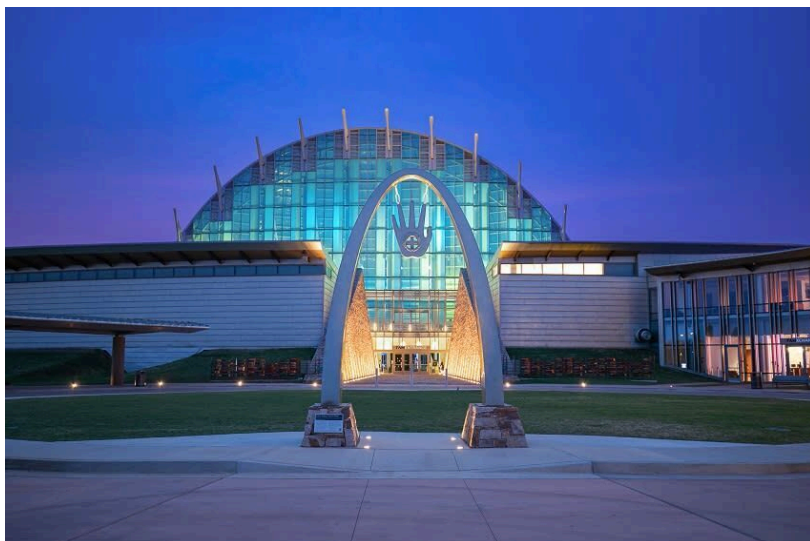


Fort Towson is listed on the National Register of Historic Places. The Fort Towson Historic Site visitor center offers engaging exhibits that delve into the fort's rich history from its construction in 1824 and its role in the Mexican- American War and the Civil War, to the steamboats that ferried people and supplies through the region. Notable figures like Sam Houston and Davy Crockett passed through its gates. Hear the story of nearby Doaksville, first established as a trading post that later became a thriving commercial center and capital of the Choctaw Nation. Explore engaging exhibits, a reconstructed sutler store, teamster's cabins and more.

Oklahoma Historical Society | Oklahoma Territorial Museum and Carnegie Library

Guthrie, Oklahoma
405-282-1889
www.okhistory.org/sites/territorialmuseum

The Oklahoma Territorial Museum and Carnegie Library in Guthrie tells the compelling story of the people who shaped Oklahoma from its turbulent territorial period to statehood. Through artifacts, photographs, and paintings, the museum explores the 1890s land runs, early settlements, and the creation of Oklahoma Territory. The 1902 Carnegie Library, built with a grant from the Carnegie Foundation, served as the site of Oklahoma's statehood ceremonies on November 16, 1907. Learn about the dramatic 1889 Land Run, life in early sod houses and dugouts, and the growth of towns like Guthrie, Stillwater, and Oklahoma City. From farmers and tradesmen to saloon keepers and entrepreneurs, the museum captures the diversity of early settlers who brought hope to the Unassigned Lands. Operated by the Oklahoma Historical Society, this unique site preserves the roots of Oklahoma's statehood in the very place it began.



First Americans Museum

Oklahoma City, Oklahoma
405-594-2100
famok.org

Welcome to First Americans Museum! In one place, visitors experience the collective histories of the 39 distinct First American Nations in Oklahoma today. The 175,000 square foot museum, located in Oklahoma City's new Horizons District, showcases state-of-the-art exhibitions in First American history, community events and educational programs, a restaurant and cafe offering unique Indigenous-inspired cuisine, a multi-purpose theater and museum store featuring exclusive items created by premiere First American artists.

Westerly, Rhode Island
401-773-9767
www.wmairi.org

Westerly Museum of American Impressionism

An exciting new addition to the New England cultural landscape, the Westerly Museum of American Impressionism was established by philanthropists and art collectors Cynthia and Thomas Sculco. The museum is dedicated to collecting, preserving, interpreting, and exhibiting works of American Impressionism from the 1880s-1920s. Through engaging exhibitions and educational initiatives, the museum seeks to inspire and enrich lives by celebrating this vibrant art movement. Within the museum's eleven galleries, explore vibrant masterpieces by celebrated artists such as Childe Hassam, Jane Peterson, John Singer Sargent, and more.



National Center for Children's Illustrated Literature



Abilene, Texas
325-673-4586
www.nccil.org

The National Center for Children's Illustrated Literature (NCCIL) is located in the Storybook Capital of the World and has a vision to inspire and empower children to read and be creative. Here at the museum we bring stories to life by partnering with award-winning children's picture book illustrators to create one-of-a-kind, hands on exhibitions. These vibrant displays captivate visitors of all ages, showcasing the artistry behind beloved picture books. Locally, the NCCIL is a hub of creativity offering guests the opportunity to meet visiting artists during exhibit openings,

participate in FREE family art activities every Saturday, and annual artist workshops and book signings. The NCCIL also offers free guided Exhibition tours for students from all over the region. After debuting in our gallery, exhibitions are available to embark on a nationwide tour, reaching museums, public libraries, and galleries across the country.

Mulva Cultural Center

De Pere, Wisconsin
920-309-8200
mulvacenter.org

Mulva Cultural Center is a 75,000-square-foot cultural destination in historic De Pere. Designed by renowned architecture firm Skidmore, Owings & Merrill (SOM), the Center reflects the richness of its surrounding community—where historic storefronts, a vibrant college, industry, and commerce coexist along the Fox River. The Mulva Cultural Center is committed to showcasing the world's finest

traveling exhibitions while offering meaningful opportunities for engagement across history, art, and culture. Through dynamic programming and exhibitions, Mulva Cultural Center aims to inspire curiosity, spark dialogue, and serve as a premier hub for cultural enrichment in Northeast Wisconsin.



Milwaukee County Historical

Milwaukee, Wisconsin
414-273-8288
milwaukeehistory.net

The Milwaukee County Historical Society was founded in 1935 and has become the place for people to learn about and to celebrate Milwaukee. Through education programs, exhibitions, the research library, our historic sites, and special events, MCHS offers Milwaukeeans and visitors to Milwaukee a chance to connect with the heritage of Milwaukee. More than one million documents and photographs and more than 75,000 artifacts are preserved by MCHS and it is our hope to share these resources with the community.



Carbon County Museum

Rawlins, Wyoming
 307-328-2740
www.carboncountymuseum.org

The Carbon County Museum is located in Rawlins, Wyoming. We have a varied collection from Western art, historic firearms, artifacts from famous Western outlaws, historic vehicles, and even a full-size Columbian Mammoth skull. It is safe to say we have it all here at the Carbon County Museum. We offer something for everyone in the high desert of Southern Wyoming.

Your member engagement platform




Digital Membership



SMS / Text Messaging



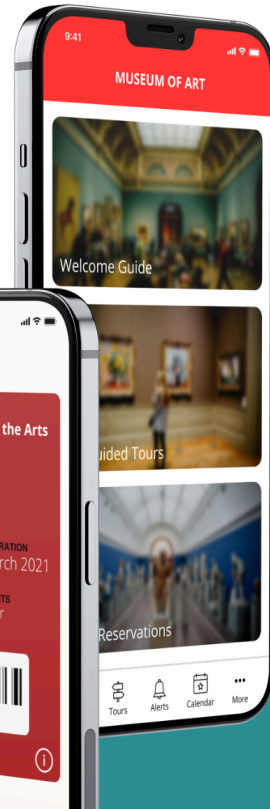
Member Portal



Visitor Engagement



Loyalty & Rewards



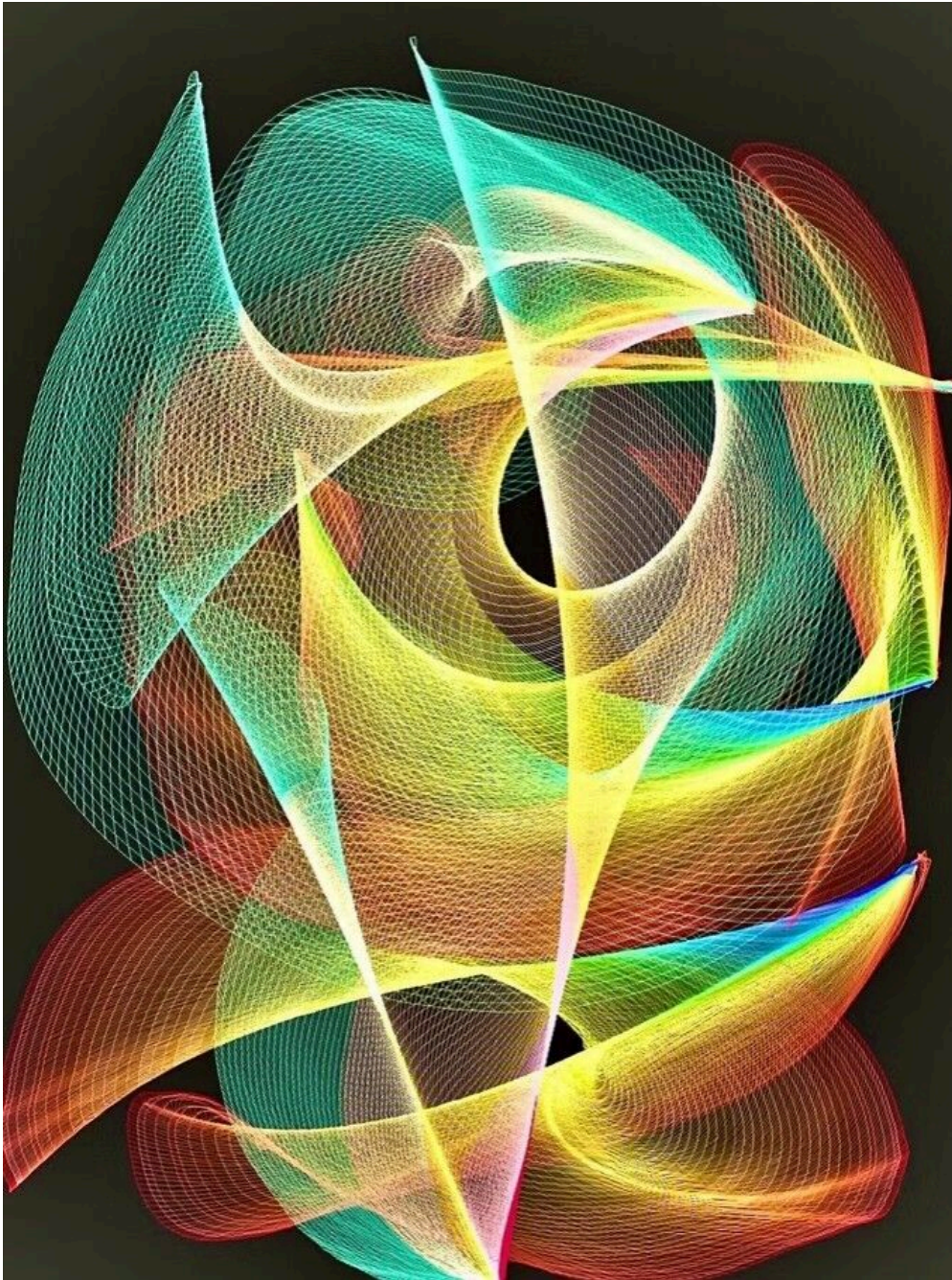
Hundreds of museums and cultural organizations leverage Cuseum's solutions to help you drive visitor, member, and patron engagement.

Cuseum's solutions are compatible with leading CRMs & Systems including:



Ready to Learn More? Request A Demo @ cuseum.com

Collaborative Juried Exhibition with the National Association of Digital Artists (NaDA)
Presented by Cape Cod Museum of Art



Katya Rosenzweig (Massachusetts), *Awakening*, 2022. Abstract, 14in. x 12 in.

Digital Art Digital Art is an artistic work or practice that uses digital technology as an essential part of the creative process. This includes the use of computers, mobile phones or portable handheld devices in conjunction with a variety of apps. Digital art can take many forms including paintings made entirely of pixels, collage, original photography, animation and video.

For this juried exhibition, 104 artists responded to the international call for entries, representing 5 countries (including 7 states in the USA). A total of 192 digital artworks were submitted for this competition – a collaboration between the National Association of Digital Artists (NaDA) and the Cape Cod Museum of Art. Only 45 artworks were juried into the exhibition. All works are on now view at the Cape Cod Museum of Art in Dennis Village, and may also be seen in an online gallery at: www.CCMoA.org/pixels

Online Experiences
Presented by National Museum of Women in the Arts



Habitat, Ellen Jean Diederich. Merit Award

Heritage Hall Museum is honored to host the Alabama Watercolor Society's 81st National Exhibition this spring.

The Watercolor Society of Alabama began in 1939 with an exciting vision to promote, create and inspire painters in the art of watercolor media. Embracing that vision, the society holds juried watercolor competitions each year: WSA Annual National Exhibition, Statewide Alabama Members Showcase, and Online Showcase.

View award winners online here:

<https://watercolorsocietyofal.org/exhibition/2021-22-national-online-showcase/>

Alabama Watercolor Society's 81st National Exhibition
Presented by Jemison Carnegie Heritage Hall Museum and Arts Center



Lilly Martin Spencer, *Still Life with Watermelon, Pears and Grapes*, ca. 1859; Oil on canvas, 13 1/8 x 17 1/4 in.; National Museum of Women in the Arts, Gift of Wallace and Wilhelmina Holladay; Photo by Lee Stalsworth

Explore highlights from the collection of works by women artists. View "See for Yourself" cards that highlight selected works from the collection and special exhibitions. Use them in the museum, at home, or in the classroom to engage with artworks, discover fascinating facts, and reflect on your experience.

Get to know five women artists—Harmony Hammond, Louise Bourgeois, Joyce Kozloff, Miriam Schapiro, and Sarah Charlesworth—who are depicted in *SoHo Women Artists* (1978), by May Stevens on the "Broad Strokes Blog."

View online here:

<https://nmwa.org/art/collection/>



The *only* museum search tool!

Discover more than 1600 museums across the US
... listed all in one place!

- ✓ Searchable by city or state
- ✓ Editor-selected featured exhibitions
- ✓ Links to each museum's own website for details
- ✓ *Art Things Considered* art-travel blog

Planning a trip?

Wherever you are or wherever you go in the US,
[ArtGeek](#) provides descriptive listings and links to

- art museums
- historic houses & artists' studios
- sculpture & botanical gardens

ArtGeek is good news for art-lovers who travel!

[ArtGeek](#) is good news for art museums and gardens, too!

Click [here](#) to learn if your institution is listed.

If it's not but should be, please [contact](#) us.

New and Rejoining members 6/15/2025 through 9/14/2025

CANADA, ON, Mississauga, Art Gallery of Mississauga, 905-896-5088
ARIZONA, Phoenix, Deer Valley Petroglyph Preserve, 623-582-8007
CALIFORNIA, Escondido, California Center for the Arts | Escondido Foundation, 619-836-4958
CALIFORNIA, Rancho Cucamonga, Sam and Alfreda Maloof Foundation for Arts and Crafts, 909-980-0412
CALIFORNIA, Redding, Shasta Historical Society, 530-243-3720
CALIFORNIA, San Clemente, Casa Romantica Cultural Center and Gardens, 949-413-8033
CONNECTICUT, Sharon, Sharon Historical Society & Museum, 860-364-5688
CONNECTICUT, Westport, MoCA\CT| Museum of Contemporary Art Connecticut, 203-222-7070
FLORIDA, Naples, Conservancy of Southwest Florida, 239-262-0304
FLORIDA, Naples, Holocaust Museum & Cohen Education Center, 239-263-9200
FLORIDA, Ponte Vedra Beach, Guana Tolomato Matanzas National Estuarine Research Reserve Learning Center, 904-380-8610
GEORGIA, Moultrie, Colquitt County Arts Council, 229-985-1922
GEORGIA, Watkinsville, Oconee Cultural Arts Foundation | OCAF, 404-932-6215
ILLINOIS, Charleston, Tarble Arts Center, 217-581-2787
ILLINOIS, Chicago, Renaissance Society at the University of Chicago, 773-702-8670
INDIANA, Valparaiso, Art Barn School of Art, 219-462-9009
KANSAS, Wichita, Ulrich Museum of Art, 316-978-3664
LOUISIANA, New Orleans, Pitot House, 504-482-0312
LOUISIANA, Ponchatoula, Twin Steeples Creative Arts Center, 985-265-8411
MARYLAND, Baltimore, Jewish Museum of Maryland, 410-732-6400
MISSOURI, Joplin, George A. Spiva Center for the Arts, 417-623-0183
NEBRASKA, Ashland, Strategic Air Command and Aerospace Museum, 402-944-3100
NEW HAMPSHIRE, Franconia, New England Ski Museum | Franconia, 603-823-7177
NEW HAMPSHIRE, Keene, Historical Society of Cheshire County, 603-352-1895
NEW HAMPSHIRE, North Conway, New England Ski Museum | North Conway, 603-730-5044
NEW MEXICO, El Prado, Millicent Rogers Museum*, 575-758-2462
NEW MEXICO, Ruidoso, Wingfield Heritage House Museum, 575-257-5559
NEW YORK, Ballston Spa, National Bottle Museum, 518-885-7589
NEW YORK, Seneca Falls, National Women's Hall of Fame, 315-568-8060
NEW YORK, Troy, Hart Cluett Museum of Historic Rensselaer County, 518-272-7232
OHIO, Oberlin, Firelands Association for the Visual Arts, 440-774-7158
OKLAHOMA, Fort Towson, Oklahoma Historical Society | Fort Towson Historic Site, 580-873-2634
OKLAHOMA, Guthrie, Oklahoma Historical Society | Oklahoma Territorial Museum and Carnegie Library, 405-282-1889
OKLAHOMA, Oklahoma City, First Americans Museum, 405-594-2100
RHODE ISLAND, Westerly, Westerly Museum of American Impressionism, 401-773-9767
TEXAS, Abilene, National Center for Children's Illustrated Literature, 325-673-4586
WISCONSIN, De Pere, Mulva Cultural Center, 920-309-8200
WISCONSIN, Milwaukee, Milwaukee County Historical Society, 414-273-8288
WYOMING, Rawlins, Carbon County Museum, 307-328-2740

*NARM privileges may be restricted for concerts/lectures/special exhibitions and ticketed events.

Why Use a Portal?

People use portals **to get links** to search, videos, user posts, purchases, history, resale items...



WIKIPEDIA

TRIPinfo.com is a **portal used for logistics and details** that are needed when planning Leisure Group Trips.



Common Denominators	Popular Portals	TRIPinfo.com
Pioneer	Some of the first commercial websites launched in 1996	One of the first commercial travel websites – launched in 1996
Purpose	Trusted website, loyal audiences	Trusted website, loyal audience
Design	Simple, clean, and largely unchanged since launch	Simple, clean, and largely unchanged since launch
Influence	Among the most popular global websites...hundreds of millions, even billions of monthly visits	Most popular website in its category...consistently 40,000-50,000 monthly visits
Pages per Visit, Time on Site	Higher than non-portal sites	Higher than non-portal sites
Bounce Rate	Lower than non-portal sites	Lower than non-portal sites
Privacy		User privacy protected. Acceptable Ads Certified: Strict global standards for unobtrusive, self-selected, tasteful ads



ET CETERA (CONTINUED)...

Other updates

ALABAMA, Mobile, Alabama Contemporary Art Center, Remove, Lost contact
CALIFORNIA, Los Angeles, Italian American Museum of Los Angeles, Remove, Lost contact
CALIFORNIA, Yountville, Napa Valley Museum Yountville, Remove, Not renewing this year
COLORADO, Fort Collins, Poudre Landmarks Foundation, Remove, Lost contact
FLORIDA, Jacksonville, Jacksonville Historical Society, Update, Name change to Jacksonville History Center
FLORIDA, Lake City, Gateway Art Gallery | Art League of North Florida, Inc., Remove, Delay activation
FLORIDA, Lake Wales, Bok Tower Gardens, Add restriction, ***
KENTUCKY, Mount Sterling, Gateway Regional Arts Center, Remove, Not renewing this year
MASSACHUSETTS, Worcester, EcoTarium*, Update, Add restriction *
MASSACHUSETTS, Worcester, Worcester Historical Museum, Update, Update name to Museum of Worcester and website to www.worcesterhistory.org
NEVADA, Las Vegas, Burlesque Hall of Fame, Remove, Closed
NEW HAMPSHIRE, Concord, New Hampshire Historical Society, Update, Add restriction*
NEW YORK, Albany, Irish American Heritage Museum, Remove, Not renewing this year
NEW YORK, New York, Clemente Soto Véllez Cultural and Educational Center, Remove, Lost contact
NEW YORK, New York, Museum of American Illustration, Update, Name change to Museum of Illustration
NORTH CAROLINA, Asheville, Moogseum, Remove, Lost contact
OREGON, Independence, Heritage Museum, Remove, Lost contact
OREGON, The Dalles, The Dalles Art Center, Remove, Membership lapse
PENNSYLVANIA, Hanover, Hanover Area Historical Society, Remove, Lost contact
TEXAS, La Grange, Texas Quilt Museum, Remove, Membership lapse
WASHINGTON, Bellevue, Bellevue Arts Museum, Remove, Closed

*NARM privileges may be restricted for concerts/lectures/special exhibitions and ticketed events.

**NARM privileges do not extend to other institutions members within a 15-mile radius.

***NARM privileges do not extend to other institutions members within a 15-mile radius and may be restricted for concerts/lectures/special exhibitions and ticketed events.



AL WILLIAMS

NORTH AMERICAN RECIPROCAL MUSEUM

NORTH AMERICAN RECIPROCAL MUSEUM

NORTH AMERICAN RECIPROCAL MUSEUM

NA RM

ASSOCIATION

NORTH AMERICAN RECIPROCAL MUSEUM

NORTH AMERICAN RECIPROCAL MUSEUM