





### Featured Artist: Trinh Mai

Trinh Mai is a second-generation Vietnamese American visual artist who examines the refugee and immigrant experience, then and now. Through a vast breath of media, she helps tell the stories of "we," the enduring People, while focusing on our witnessing of war, the wounds we've survived, our collective need to heal, the longsuffering hope that carries us through deep waters, and the custodial responsibility to which we are heirs.

As a California-based interdisciplinary artist whose work is driven by innovative narratives of storytelling, her artistic creations re-imagine personal and inherited memories, family roots, and spiritual connections that alter conceptions of our identities and shared histories. Since receiving her BFA in Pictorial Art from San José State University and furthering her studies at UCLA, Mai has continued exhibiting with works taking residence in public and private collections internationally.

Mai was named University of Washington's Walker-Ames Guest Scholar in 2019, awarded the Long Beach Professional Artist Fellowship in 2021, and was commissioned in 2022 as inaugural muralist for the newly renovated wing of Tom Bradley International Terminal at Los Angeles International Airport, where she created a 185-foot mural that speaks on migration and freedom. In 2023, she was named a California Creative Corps Fellow, during which she developed arts programming with Khmer Girls in Action for the empowerment of young Cambodian women in Long Beach, and in 2024, was awarded the Visiting Mellon Practitioner Fellowship at Brown University. In 2025, she received the First Place Award for the Artist Alliance Biennial at the Oceanside Museum of Art.

Sharing her inspiration and vision for "How Long," this Quarterly's featured work, Mai states: "The title references [Psalm 13:1](#) wherein the author writes, 'How long wilt thou forget me, O Lord? for ever? how long wilt thou hide thy face from me?' This work is dedicated to the ones whose compassion has called them to take up iron for a fight that may not be directly theirs, but whose fragile eyes serve as mirrors while witnessing the suppression that deteriorates the dignity of life. This is for the faithful ones who continue in hope, the ones that know that all things pass, the ones who recognize that without hope there exists only the horror of looming defeat. To the longsuffering who draw in slow, patient breaths into withered lungs: Arise. This fight is not in vain."

Find out more about Mai here: <https://trinhmai.com/biography>

[Images: (Cover, above, and back page) Trinh Mai, How Long, 2019. Acrylic, charcoal, gouache, hand embroidery, pressed leaves, scripture and tree bark on paper. 28 1/2 x 22 1/2"]

# Contents

Meet our Newest Members.....	4
Virtual Programming.....	15
Et cetera...	
New and rejoining members.....	19
Other updates.....	21

## Dennis G. Pappas Historical Collections Gallery

Birmingham, Alabama  
205-934-4475  
[go.uab.edu/pappasgallery](http://go.uab.edu/pappasgallery)

The Dennis G. Pappas Historical Collections Gallery, a 3,000-square-foot space on the second floor of Lister Hill Library of the Health Sciences, houses rotating exhibitions featuring the Historical Collections of University of Alabama at Birmingham (UAB) Libraries.

The Pappas Gallery is the exhibition home to the Alabama Museum of the Health Sciences, the Reynolds-Finley Historical Library, and the UAB Archives.



## Sigler Western Museum

Wickenburg, Arizona  
928-684-2272  
[westernmuseum.org](http://westernmuseum.org)

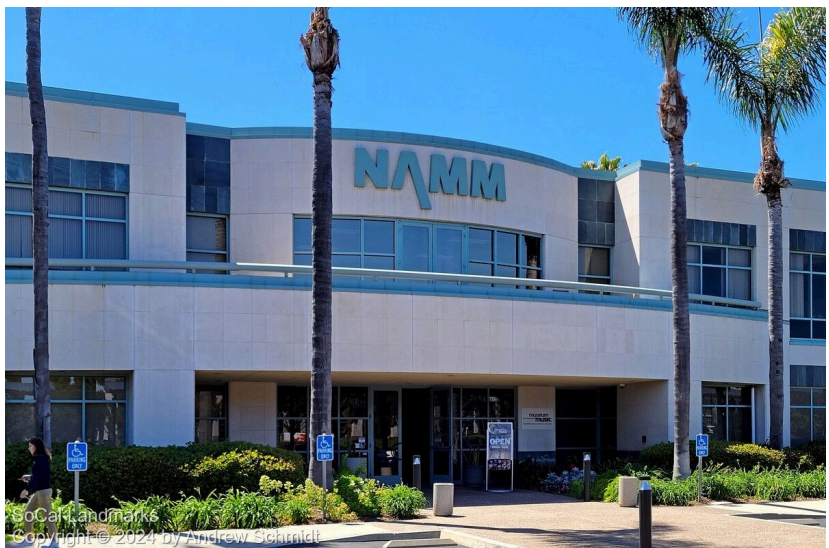
The Sigler Western Museum celebrates the rich heritage, history, and artistry of the American West through dynamic exhibitions, educational programs, and a distinguished permanent collection that includes works by influential artists such as Charles M. Russell, Frederic Remington, and Georgia O'Keeffe. The museum also preserves significant regional history, offering insight into the people, cultures, and stories that shaped the West. Home to the acclaimed Cowgirl Up! An invitational art exhibition and sale, which highlights "the other half of the West" by showcasing Western art from 65 women artists each year. The museum connects visitors to the culture, landscape, and spirit that define Wickenburg and the broader Western experience.

Carlsbad, California  
760-438-5996  
[www.museumofmakingmusic.org](http://www.museumofmakingmusic.org)

## Museum of Making Music

Founded in 1998 and opened to the public in March 2000, the Museum of Making Music celebrates the accomplishments and impact of the people who make, sell, and use musical instruments and products. It does this through unique exhibitions, vibrant and varied live music performances, and innovative educational programs.

NAMM, the National Association of Music Merchants, is a not-for-profit association that serves and strengthens the global music products industry. NAMM and its world-famous trade shows serve as a hub for people seeking out the newest innovations in musical products, and sound equipment.



# ST NARM MEMBERS





## Gualala Arts Center

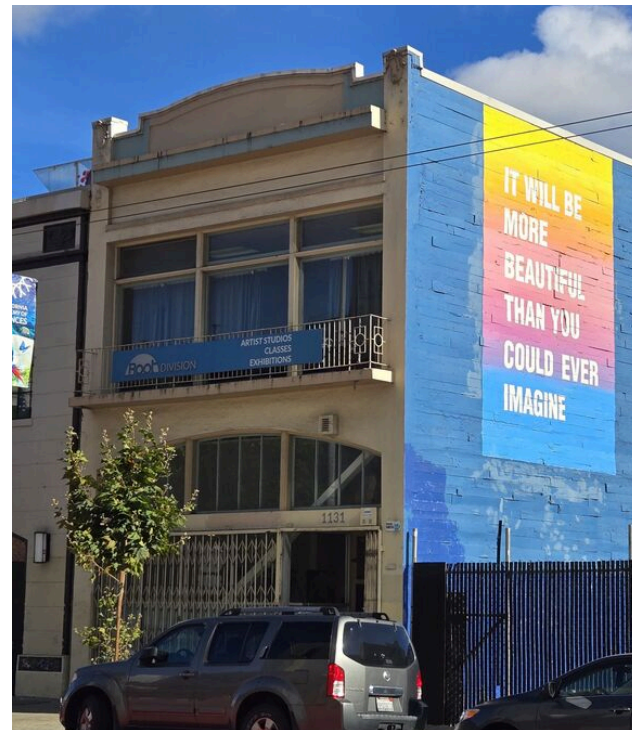
Gualala, California  
707-884-1138  
gualalaarts.org

In 1961, Gualala Arts was formed to create the first Art in the Redwoods Festival. In 1965 Gualala Arts became a non-profit organization. Since then, it has become a vibrant and active arts association supporting and serving Sonoma and Mendocino County coastal residents and visitors with year-round programs of art, music, theater and education. This multi-million dollar cultural 15,000 square foot facility in 10 plus acres of redwood forest in the little coastal community of Gualala on the Northern California coast is home to monthly art exhibitions, performing arts and community events of Mendocino and Sonoma counties.

## Root Division

San Francisco, California  
415-863-7668  
www.rootdivision.org

Root Division is a San Francisco-based non-collecting contemporary art space and nonprofit museum that connects the public with emerging and mid-career artists through exhibitions, education, and community engagement. Founded in 2002, Root Division provides affordable studios for over 30 artists, presents ten exhibitions annually, and offers free art classes for more than 1,000 youth in under-resourced schools. As a non-collecting institution, Root Division focuses on the presentation and interpretation of contemporary art rather than maintaining a permanent collection. Through exhibitions, artist talks, and accessible public programs, Root Division fosters cultural dialogue, supports diverse artistic voices, and strengthens the Bay Area's creative ecosystem.

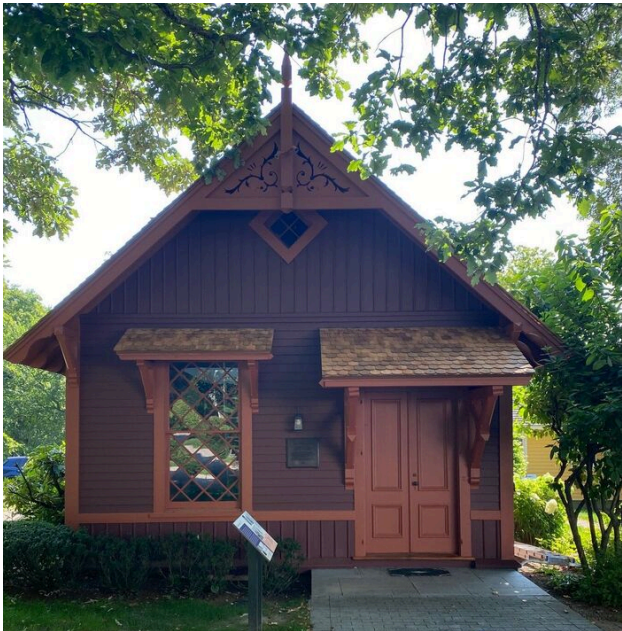


## Sausalito Center for the Arts

Sausalito, California  
415-871-8740  
www.sausalitocenterforthearts.org

Sausalito Center for the Arts is a 501C3 with rotating visual arts exhibits as well as performance events. Our mission is to enrich our cultural experience and unite our community through diverse artistic expression for the benefit of all. Our programs are meant to build connections, create dialogue, and transform our community through understanding, inclusion and acceptance.

# T NARM MEMBERS



## New Canaan Museum & Historical Society

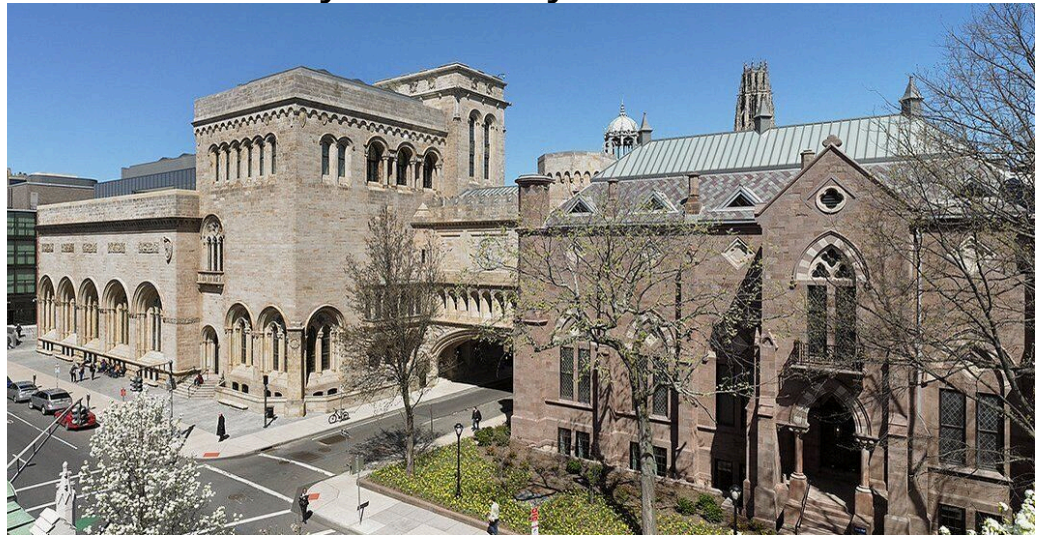
New Canaan, Connecticut  
203-966-1776  
nchistory.org

The New Canaan Museum is a four acre campus with 7 historic house museums, a permanent exhibition on the history of New Canaan, and rotating exhibitions. It also owns three other historic properties in New Canaan, which can be opened for visitors. We offer 30+ programs, including special events for children, mount exhibitions, and offer docent-led tours.

## Yale University Art Gallery

New Haven, Connecticut  
203-432-0600  
artgallery.yale.edu

The Yale University Art Gallery collects, preserves, studies, and presents art in all media, from all regions of the globe and across time. The museum's exceptional collection—numbering nearly 300,000 objects—is the core of its identity. It sustains and catalyzes all we do. Founded in 1832, the Gallery is the oldest university art museum in America.



Today, it is a center for teaching, learning, and scholarship and is a preeminent cultural asset for Yale University, the wider academic community, and the public. The museum is open to all, free of charge, and is committed to engaging audiences through thoughtful, creative, and relevant exhibitions, programs, and publications.

## Lake Wales Arts Council

Lake Wales, Florida  
863-676-8426  
www.lakewalesartscouncil.org

Since 1972, the Lake Wales Arts Council has enriched Central Florida through exceptional visual and performing arts programs, exhibitions, and education initiatives. Located in the historic Lake Wales Arts Center—a beautifully restored 1927 Spanish-Mission-style church—the Council presents year-round concerts, art exhibitions, and youth education programs in music, ceramics, and visual arts. Our mission is to inspire creativity, strengthen community, and ensure access to the arts for all. Members enjoy dynamic cultural experiences that celebrate both local heritage and contemporary innovation within our vibrant arts community.



## Masur Museum of Art



Monroe, Louisiana  
318-329-2237  
[www.masurmuseum.org](http://www.masurmuseum.org)

The Masur Museum of Art is the largest contemporary art museum in Northeast Louisiana. Unique in its setting and renowned for its permanent collection and exhibitions, The Masur Museum provides an art experience that is distinctly local, emphasizing artists from Louisiana and the greater Southeast alongside artists of national and international importance.

The permanent collection includes works by Thomas Hart Benton, Mary Cassatt, Salvador Dali, Philip Guston, Joan Miró,

Robert Motherwell, Pablo Picasso, and Auguste Rodin. Temporary exhibitions are curated year-round along with a full calendar of programming including art lectures, gallery tours, and more.

## Old Ursuline Convent Museum

New Orleans, Louisiana  
504-529-3040  
[www.oldursulineconventmuseum.com](http://www.oldursulineconventmuseum.com)

The oldest building in the Mississippi Valley, our building was erected in 1745 as a convent, orphanage, and school for girls. This historic building is now a beautiful museum home to both permanent and changing exhibits. St. Mary's Church and beautiful gardens complete our site.



## Pickering Foundation

Salem, Massachusetts  
978-744-4777  
[pickeringhouse.org](http://pickeringhouse.org)

The Pickering Foundation was formed in 1951 to preserve the Pickering House, the family stories and history it reveals. It's founding principle is to strive to be a vital community educational resource where history, preservation, and the Pickering family's story come to life, so that visitors can appreciate and connect with their own American experience and the values of public service and democracy.

The 1660 House, the oldest in Salem, hosts guided tours and events such as lectures and talks on a variety of topics as they relate to the Pickering family and history; a history that goes back 11 generations on a single site. The House is just the start as it is sited on just under 2 acres in downtown Salem with an 1841 Barn that is utilized as an exhibit space.

## Wellesley Historical Society

Wellesley, Massachusetts  
781-235-6690  
[www.wellesleyhistoricalsociety.org](http://www.wellesleyhistoricalsociety.org)

The Wellesley Historical Society's mission is to collect, preserve, and share Wellesley's history and inspire public involvement in and appreciation of the town's heritage and culture. In the Wellesley History & Exhibit Center, we offer rotating exhibits based around our extensive collections, programs and lectures, and research opportunities for those with specific inquiries. Our exhibits highlight both the history of Wellesley and Wellesley's role within and connection to the wider world.



## Heritage Museum of Newaygo County



Newaygo, Michigan  
231-652-5003  
[www.newaygocountyhistory.org](http://www.newaygocountyhistory.org)

Heritage Museum of Newaygo County's mission is to collect, preserve, and share Newaygo County history. Located in the heart of River County in beautiful downtown Newaygo, the Museum, a stunning historical building with modern renovations, is a great place for all ages to make fun and informative connections with the past. Exhibits on topics such as Native American history, the importance of logging, the rise of farming, and modern day tourism are just some of the things to experience.

Hernando, Mississippi  
662-429-8852  
[www.desotomuseum.org](http://www.desotomuseum.org)

## Desoto County Museum

Since 2003, the DeSoto County Museum has served as a permanent home for the rich history of DeSoto County, Mississippi. What began in 1984 as an effort by the Historic DeSoto Foundation to preserve local stories and artifacts, officially opened its doors at 111 East Commerce Street in Hernando after years of dedicated work and community support. The museum now stands in a restored 1870s church campus, which was purchased and renovated with community fundraising and a grant from the Mississippi Department of Archives and History. As a nonprofit organization, the museum's mission is to preserve, interpret, and teach the story of DeSoto County's past, ensuring that its history is accessible to all.



## Paris Gibson Square Museum of Art

Great Falls, Montana  
406-727-8255  
[www.the-square.org](http://www.the-square.org)

Paris Gibson Square Museum of Art (The Square) is north-central Montana's only contemporary art museum. Founded in 1977 and located in Great Falls, the museum resides in and stewards the original 1896 building of the historic Central High School. The Square is known for exhibitions that feature intriguing outsider and contemporary artists in conjunction with exciting exhibition programs and studio art classes to the community.



## miSci, Museum of Innovation and Science



Schenectady, New York  
518-382-7890  
[misci.org](http://misci.org)

miSci is a center for learning, imagination, and creativity. Our 44,270-square-foot facility includes gallery space, the Suits-Beuche Planetarium, and classrooms. The Museum moved to its current location on Nott Terrace in Schenectady, New York, in 1969. In 1997, the Museum merged with the General Electric Hall of Electrical History, creating a combined collection of more than 15,000 science and technology artifacts, thousands of advertising publications, 1,500 films, 400 audio recordings, and two million photographs documenting the history of electricity, electronics, and the impact of technological change. Artifacts from the collections and archives are often featured in the Museum's exhibitions and programs.

Seneca Falls, New York  
315-568-8412  
[sfhistoricalsociety.square.site](http://sfhistoricalsociety.square.site)

## Seneca Falls Historical Society

The Seneca Falls Historical Society, established in 1896, has called the Becker Mansion home since 1961. The Becker Mansion - named for the Becker family who lived here for 70 years from 1891 to 1961 - is a Queen Anne style, Victorian period, three-floor mansion. A tour of the mansion takes visitors through 18 rooms of the home, showcasing how the Becker family lived here during the 1890s to the turn of the century and highlighting the wonderful and amazing history of the Seneca Falls community. Seneca Falls is known as the birthplace of the women's rights movement as the site of the first women's rights convention and as a center of industry with numerous factories along the Seneca River that bisects the town. SFHS and the Becker Mansion feature all of that and more.



# T N A R M M E M B E R S

## Center for Craft

Asheville, North Carolina  
828-785-1357  
[www.centerforcraft.org](http://www.centerforcraft.org)

Center for Craft amplifies how and why craft matters by increasing access to resources that catalyze makers and thinkers nationwide. Proudly based in Asheville, it has been at the center of the conversation about craft since 1996.

Each year, the Center provides grants and fellowships to makers, scholars, and curators while also producing exhibitions and public programs that shed light on the role of craft in the 21st century. It invests in the people and ideas behind the objects that shape our lives.



## North Dakota Museum of Art

Grand Forks, North Dakota  
701-777-4195  
[ndmoa.com](http://ndmoa.com)

The North Dakota Museum of Art is nationally recognized for its groundbreaking human rights exhibitions, involvement with international artists, the commissioning of landmark works of art anchored in the Northern Plains and the strength of its exhibition program. Three galleries house exhibitions of regional, national and international art. On permanent display is late New York City artist and collector Barton Benes' apartment that includes his collection of African art and oddities from around the world. Other museum features are concerts, guest lectures and kids' activities, plus a gift shop and weekday cafe.

## The Ohio State Reformatory



Mansfield, Ohio 419-522-2644 [www.mrps.org](http://www.mrps.org)

Perhaps best known as "Shawshank State Prison," the Ohio State Reformatory is a defunct prison, turned movie-star, turned museum. Construction began on The Ohio State Reformatory in 1886, with the first 150 inmates arriving in 1896. The prison remained in operation until 1990 when its doors were shuttered for keeping inmates in cruel and inhumane conditions. Offering guided and self-guided tours year-round, The Ohio State Reformatory houses 3 separate museums in one building - the Ohio Corrections Museum, the Shawshank Museum, and the North Central Ohio Industrial Museum.

## Heritage Hall Museum & Archives



Freeman, South Dakota  
605-925-7545  
[heritagehallmuseum.com](http://heritagehallmuseum.com)

Heritage Hall Museum & Archives tells the story of German-Russian immigrants who came to Dakota Territory in the 1870s. Lured by the Homestead Act of 1862, settlers from Lutheran, Reformed, Hutterite and Mennonite backgrounds brought with them their religious

traditions, strong work ethic, and determination to survive the hardships of life of the prairie. Pioneer stories and artifacts narrate the difficulties of living on the plains and the gradual building up of the community that is now Freeman, South Dakota. Our museum also offers visitors the opportunity to tour a number of restored and furnished outdoor buildings. Sit at a desk in the one-room school house, peer into the Russian oven of an 1880 pioneer home, and admire the simple elegance of two early rural churches. Sit at a desk in the one-room school house, peer into the Russian oven of an 1880 pioneer home, and admire the simple elegance of two early rural churches. Our Mercantile gift shop features artisans and authors that are local and locally grown as well as items that relate to our exhibits.

---

## McClung Museum of Natural History and Culture

Knoxville, Tennessee  
865-974-2144  
[mcclungmuseum.utk.edu](http://mcclungmuseum.utk.edu)

Located at the heart of the University of Tennessee, Knoxville campus, the McClung Museum of Natural History and Culture serves as a vital resource for the campus community and the general public. With free admission for all, the museum offers engaging exhibitions, unique research opportunities, and educational programs designed for UT faculty, students, K-12 groups, and community members alike. The McClung Museum fosters curiosity and lifelong learning by connecting visitors to stories of history, science, art, and culture from East Tennessee and around the world.



Located at the heart of the University of Tennessee, Knoxville campus, the McClung Museum of Natural History and Culture serves as a vital resource for the campus community and the general public. With free admission for all, the museum offers engaging exhibitions, unique research opportunities, and educational programs designed for UT faculty, students, K-12 groups, and community members alike. The McClung Museum fosters curiosity and lifelong learning by connecting visitors to stories of history, science, art, and culture from East Tennessee and around the world.

---

## The Citadelle Art Museum



Canadian, Texas  
806-323-8899  
[thecitadelle.org](http://thecitadelle.org)

Located in the charming town of Canadian, Texas, just a short drive from Amarillo, the Citadelle Art Museum is worth visiting any time of year. Explore our permanent collection in the Mansion and discover the latest traveling exhibit in our Gallery. Stroll through our beautiful gardens or enjoy a picnic on our scenic grounds. Originally built in 1910 as the First Baptist Church, this historic building was transformed into a family residence by the Abraham family in 1977. After 30 years, the Abrahams generously donated the mansion, its art, and gardens to the community, creating a public art museum for all to enjoy.

# NARM MEMBERS



## The Branch Museum of Design

Richmond, Virginia  
804-655-6055  
branchmuseum.org

As Virginia's only design museum, and one of the top 20 in the country, we champion work that shifts perspectives, and reimagines design's role in shaping culture.

Poulsbo, Washington  
360-994-4943  
poulsbohistory.org

## Poulsbo Historical Society

Poulsbo Historical Society brings the history of our local area to life in our 4 locations: The Heritage Museum features information, artifacts, and exhibits on our early Scandinavian settlers - their way of life in the rugged Pacific Northwest; and how the town grew throughout the early 20th century. Our Maritime Museum offers insight and exhibits on the importance of our maritime heritage - featuring our local Pacific Cod Fish Company which was a major employer in town for years; the reintroduction of the native Olympic oyster into Liberty Bay, and the many commercial boats that were built in Poulsbo, as well as hundreds of others that called Poulsbo their home port. Our Martinson Cabin that sits in a local park contains artifacts that would have been found in any local home in the late 19th century and features living history events. Our Research and Archives center contains all of the artifacts that are not currently on display at our other locations.



## National Railroad Museum



Green Bay, Wisconsin  
920-437-7623  
nationalrrmuseum.org

The National Railroad Museum inspires lifelong learning by providing dynamic educational opportunities through the preservation of railroad objects, engaging exhibits, and innovative programs. Located on Cooke Memorial Park, and later adding a portion of land owned by Brown County, the National Railroad Museum's 33 acres is the site of an increasing collection of rolling stock. Some pieces are housed in our beautiful, enclosed Frederick J. Lenfestey Center, while others are on display outside and under the roof of the Victor McCormick Train Pavilion.

# Your member engagement platform



**Digital Membership**



**SMS / Text Messaging**



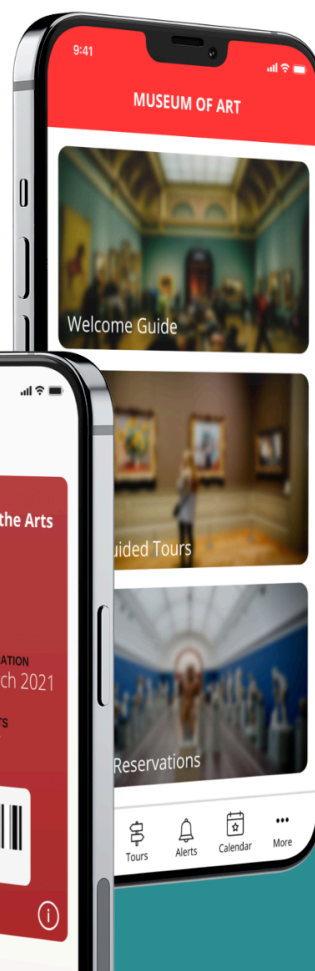
**Member Portal**



**Visitor Engagement**



**Loyalty & Rewards**



Hundreds of museums and cultural organizations leverage Cuseum's solutions to help you drive visitor, member, and patron engagement.

**Cuseum's solutions are compatible with leading CRMs & Systems including:**



**Ready to Learn More? Request A Demo @ [cuseum.com](https://cuseum.com)**

## From Darkness to Light: Portraits by Henry Ward Presented by Bermuda National Gallery



Henry Ward, *Ballerina*, 2019. Oil on Belgian linen. Collection of Michael Woodroffe

Having honed his craft for over 20 years, Henry Ward's approach to portraiture is inspired by techniques developed over the centuries by the Old Masters "in whose works light represented the presence of the Divine — darkness, our universal origins." In his studio-based practice, Ward employs traditional materials in his selection of oil paint and Belgian linen; however, stylistically, he seeks to blend the old with the new.

Ward sees this approach to portraiture as moving beyond a mere portrait, in the direction of abstraction; that the work is philosophically grounded with the interplay of light and dark as spiritual metaphors and the portrait as a springboard into a wider level of inquiry into the nature of being.

View online here: <https://bng.bm/exhibition/henry-ward/>

European Splendors: Highlights from the Kress Collection  
Presented by Columbia Museum of Art



Pieter Claesz (Dutch), 1597-1661; Still Life, 1657; oil on oak panel.

“European Splendors” offers a chance to re-experience the CMA’s Kress Collection — largely off view since 2017 — in a luxurious new way. Featuring an exciting arc of Italian art from the late medieval to the Baroque period shown alongside apothecary mortars and furniture pieces, this exhibition explores the renewed emphasis on the human condition and individualism within religious art and culminates in stunning examples of Dutch portraiture and still life. Italian landscapes by Bernardo Bellotto and Giovanni Paolo Pannini illustrate the impulse to bring a piece of history home from one’s Grand Tour as well as the 18th-century mania for Greco-Roman ruins.

Tour the multimedia gallery:

<https://www.columbiamuseum.org/multimedia-gallery-tour-european-splendors>

## Transformations in Glass: Vitreous Funk, Fantasy, and Light Presented by Claremont Lewis Museum of Art



Kéké Cribbs, Halcyon Bliss, 2016 Sculptural mosaic boat with vitreous enamel reverse painting on glass sails and glass mosaics Collection of Robert Pozen

“Transformations in Glass: Vitreous Funk, Fantasy, and Light” presents the work of Kéké Cribbs, Richard Marquis, and David Svenson, recognized glass artists who were influenced by the Claremont art community during a pivotal time in their artistic development.

All three artists were influenced by Richard Petterson, a pioneer in the ceramic and glass movement who was a ceramic professor at Scripps College, and director of the Fine Arts Building at the Los Angeles County Fair for over 30 years. In the early 1990s David Svenson met Kéké Cribbs and Richard Marquis at the Pilchuck Glass School.

View online here: <https://clmoa.org/exhibit/transformations-in-glass/>



## **The *only* museum search tool!**

Discover more than 1600 museums across the US  
... listed all in one place!

- ✓ Searchable by city or state
- ✓ Editor-selected featured exhibitions
- ✓ Links to each museum's own website for details
- ✓ *Art Things Considered* art-travel blog

## **Planning a trip?**

Wherever you are or wherever you go in the US,  
[ArtGeek](#) provides descriptive listings and links to

- art museums
- historic houses & artists' studios
- sculpture & botanical gardens

## **ArtGeek is good news for art-lovers who travel!**

---

[ArtGeek](#) is good news for art museums and gardens, too!

Click [here](#) to learn if your institution is listed.

If it's not but should be, please [contact](#) us.

## **New and Rejoining members 9/15/2025 through 12/14/2025**

---

ALABAMA, Birmingham, Dennis G. Pappas Historical Collections Gallery, 205-934-4475  
ARIZONA, Wickenburg, Sigler Western Museum, 928-684-2272  
CALIFORNIA, Carlsbad, Museum of Making Music, 760-438-5996  
CALIFORNIA, Gualala, Gualala Arts Center\*, 707-884-1138  
CALIFORNIA, San Francisco, Root Division, 415-863-7668  
CALIFORNIA, Sausalito, Sausalito Center for the Arts, 415-871-8740  
CONNECTICUT, New Canaan, New Canaan Museum & Historical Society, 203-966-1776  
CONNECTICUT, New Haven, Yale University Art Gallery, 203-432-0600  
FLORIDA, Lake Wales, Lake Wales Arts Council, 863-676-8426  
LOUISIANA, Monroe, Masur Museum of Art, 318-329-2237  
LOUISIANA, New Orleans, Old Ursuline Convent Museum, 504-529-3040  
MASSACHUSETTS, Salem, Pickering Foundation, 978-744-4777  
MASSACHUSETTS, Wellesley, Wellesley Historical Society, 781-235-6690  
MICHIGAN, Newaygo, Heritage Museum of Newaygo County, 231-652-5003  
MISSISSIPPI, Hernando, Desoto County Museum, 662-429-8852  
MONTANA, Great Falls, Paris Gibson Square Museum of Art, 406-727-8255  
NEW YORK, Schenectady, miSci, Museum of Innovation and Science, 518-382-7890  
NEW YORK, Seneca Falls, Seneca Falls Historical Society, 315-568-8412  
NORTH CAROLINA, Asheville, Center for Craft, 828-785-1357  
NORTH DAKOTA, Grand Forks, North Dakota Museum of Art, 701-777-4195  
OHIO, Athens, Southeast Ohio History Center, 740-592-2280  
OHIO, Mansfield, The Ohio State Reformatory, 419-522-2644  
PENNSYLVANIA, Hanover, Hanover Area Historical Society, 717-632-3207  
SOUTH DAKOTA, Freeman, Heritage Hall Museum & Archives, 605-925-7545  
TENNESSEE, Knoxville, McClung Museum of Natural History and Culture, 865-974-2144  
TEXAS, Canadian, The Citadelle Art Museum, 806-323-8899  
VIRGINIA, Richmond, The Branch Museum of Design, 804-655-6055  
WASHINGTON, Poulsbo, Poulsbo Historical Society, 360-994-4943  
WISCONSIN, Green Bay, National Railroad Museum, 920-437-7623

\*NARM privileges may be restricted for concerts/lectures/special exhibitions and ticketed events.

# Why Use a Portal?

People use portals **to get links** to search, videos, user posts, purchases, history, resale items...



WIKIPEDIA

**TRIPinfo.com** is a **portal used for logistics and details** that are needed when planning Leisure Group Trips.



Common Denominators	Popular Portals	TRIPinfo.com
<b>Pioneer</b>	Some of the first commercial websites launched in 1996	One of the first commercial travel websites – launched in 1996
<b>Purpose</b>	Trusted website, loyal audiences	Trusted website, loyal audience
<b>Design</b>	Simple, clean, and largely unchanged since launch	Simple, clean, and largely unchanged since launch
<b>Influence</b>	Among the most popular global websites...hundreds of millions, even billions of monthly visits	Most popular website in its category...consistently 40,000-50,000 monthly visits
<b>Pages per Visit, Time on Site</b>	Higher than non-portal sites	Higher than non-portal sites
<b>Bounce Rate</b>	Lower than non-portal sites	Lower than non-portal sites
<b>Privacy</b>		User privacy protected. Acceptable Ads Certified: Strict global standards for unobtrusive, self-selected, tasteful ads



# ET CETERA (CONTINUED)...

## Other updates

---

CANADA, ON, Almonte, Mississippi Valley Textile Museum, Remove, Not renewing this year  
MEXICO, Nuevo León, Monterrey, Museo de Arte Contemporáneo (MARCO), Remove, Lost contact  
KENTUCKY, Maysville, Kentucky Gateway Museum Center, Remove, Lost contact  
ALABAMA, Northport, Kentuck Museum, Remove, Lost contact  
ALABAMA, Troy, Johnson Center for the Arts, Remove, Lost contact  
CALIFORNIA, Cupertino, Cupertino Historical Society and Museum, Remove, Lost contact  
CALIFORNIA, Santa Ynez, Santa Ynez Valley Historical Museum, Remove, Lost contact  
FLORIDA, Jacksonville, Museum of Science and History of Jacksonville, Remove, Closed during relocation  
FLORIDA, Naples, Naples Art Association, Update, Name change to Naples Art Institute  
ILLINOIS, Chicago, The National Museum of Puerto Rican Arts and Culture, Remove, Lost contact  
MASSACHUSETTS, Pittsfield, Hancock Shaker Village\*, Update, Add \*  
MASSACHUSETTS, Stockbridge, Norman Rockwell Museum\*, Update, Add \*  
MONTANA, Bozeman, Bozeman Art Museum, Remove, Not renewing this year  
NEW HAMPSHIRE, Portsmouth, Moffatt-Ladd House & Garden, Remove, Not renewing this year  
NEW JERSEY, Lincroft, The Monmouth Museum, Remove, Not renewing this year  
OHIO, Lebanon, Warren County Historical Society, Update, Name change to Harmon Museum  
TEXAS, Austin, Texas Military Forces Museum, Remove, Lost contact  
TEXAS, Buffalo Gap, Taylor County History Center, Update, Name change to Buffalo Gap Historic Village |  
Taylor County History Center

\*NARM privileges may be restricted for concerts/lectures/special exhibitions and ticketed events.

23 Know that *our* brother  
has been set free, with who  
you if he comes sh

and those who dwen  
will marvel, whose r  
in the P