

NA
ARM

*North American Reciprocal
Museum (NARM) Association®*

Quarterly
Spring 2026





New Addition at the Museum of Early Trades & Crafts

9 Main Street, Madison, NJ 07940
973-377-2982
www.metc.org
info@metc.org

The Museum of Early Trades & Crafts (METC) located in Madison, New Jersey recently completed the build-out of a Viewable Storage Facility. After five years of planning and construction, this new space provides the museum with a state-of-the-art, on-site facility to house its collection of over 8,000 artifacts and archival materials, expanding the capacity to preserve the collection and strengthen conservation efforts. It also provides a renewed focus on collections management, which harnesses all the museum's resources and knowledge, paving the way for future digitization of the collection.

Museums have always been exciting places to explore and learn; balancing education, research, and preservation while also maintaining their place as cultural databases. This \$1.4 million project offers visual access for the public to observe the conservation and care of the collection through a large viewing area, creating another opportunity for education.

Museum of Early Trades & Crafts shares the past and imagines the future by exploring American history with a focus on the life and stories of 18th- and 19th- century craftsmen and artisans. Drawing on its rich collection, METC is connecting the lives of people and their stories, while providing a bridge from the past to the future. Housed in a stunning Richardsonian Romanesque Revival building donated by D. Willis James to the people of Madison in 1900, METC offers something for visitors of all ages.

Deborah Farrar Starker, METC's Executive Director remarked that, "Protecting and preserving our cultural heritage benefits everyone and enables better access for scholarly research. From the very beginning of this project, we were focused on our responsibility as stewards of this material culture to maintain, conserve and protect it so that each object can tell its story about the people who used these tools, wore the clothing, wrote the letters and journals and left this legacy for us to learn from and to understand their individual histories." Environmental circumstances necessitated speeding up the entire process, from design to build out, to cabinetry installation. "Working on such a timeline was both invigorating and stressful, commented Starker, "but being a small institution may have enabled us to be a bit nimbler in how we managed the entire process including working around schedules and re-arranging other projects."

The museum gratefully acknowledges the many partners who were instrumental in funding this project, especially The National Endowment for Humanities, the New Jersey Historic Trust, The New Jersey Historical Commission, The Fred W. Brehne Trust, Hyde & Watson Foundation, New Jersey Council for Humanities, Madison Open Space, Recreation & Historic Preservation, and The Charles L. Read Foundation.

[All images courtesy Museum of Early Trades & Crafts]

Contents

Meet our Newest Members.....	4
Virtual Programming.....	17
Et cetera...	
New and rejoining members.....	21
Other updates.....	23

Sebastopol Center for the Arts

Sebastopol, California
707-829-4797
www.sebarts.org

Experience Art, Make Art, Share Art and Celebrate Creative Thought. With the mission to enrich lives through art, Sebastopol Center for the Arts is committed to cultivating creativity and inspiring appreciation for the transformative power of art.

We produce, promote and present artists - local, national, international – through curated gallery exhibits, artists open studio events, arts lectures, poetry readings, concerts, adult and youth education, a state of the art ceramics studio and an acclaimed documentary film festival.



Rollins Museum of Art



Winter Park, Florida
407-646-2526
www.rollins.edu/rma

Located on the Rollins College campus, Rollins Museum of Art features dynamic exhibitions drawn from a world-class collection of contemporary and historical art, educational programming that presents cutting-edge research. Also, be sure to visit our satellite location at The Alford Inn which features 100+ artworks on view from the Rollins Museum of Art's Alford Collection of Contemporary Art.

Hays Arts Council

Hays, Kansas
785-625-7522
haysartscouncil.org

Founded in 1967, the Hays Arts Center is proud to be Kansas' first community arts organization. The gallery features many new exhibits throughout the year, including the Five State Photography Exhibition, the Smoky Hill Art Exhibition, and four yearly artwalks during the Spring, Summer, Fall & Winter. The annual gallery walks are free to attend, open to the public, and provide a great way for residents and visitors of all ages and interests to participate and enjoy the arts. The gallery is open six days a week and has a gift shop that features art from local and regional artists.



ST NARM MEMBERS





Woodlawn Museum

Ellsworth, Maine
207-667-8671
woodlawnellsworth.org

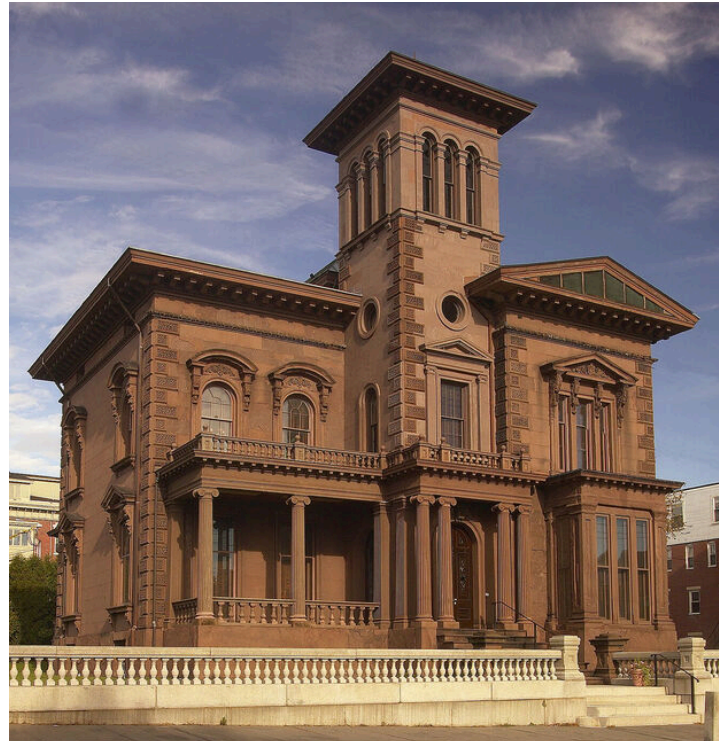
The mission of Woodlawn Museum is to nurture curiosity and a sense of place by promoting Downeast Maine's cultural heritage through diverse educational and recreational experiences. The Woodlawn campus includes an early 19th century historic house museum, 180 acres of grounds and trails for public use and a new facility for community events, educational programs, lectures, and archival storage and study of historic

records. Last year, in addition to several thousand campus visitors touring the house, using the trails, and attending seasonal events, we hosted over fifty Woodlawn Educational and Community Engagement programs such as Science Saturdays, a monthly local history lecture series, home schooling events, nature festivals, and many more.

Victoria Mansion

Portland, Maine
207-772-4841
victoriamansion.org

History. Exploration. Wonder. To people who are curious about art and history, Victoria Mansion is a triumph of 19th-century architecture and design with a wealth of stories to tell. Surviving intact with over 90% of its original interiors more than 160 years after its construction, Victoria Mansion is an historic house museum welcoming guests of all ages and backgrounds for a unique opportunity to explore and connect with the past. The mission of Victoria Mansion is to conserve, maintain, and restore the Victoria Mansion property and collections to the highest standards and to interpret them in their social and historical context to a broad local, state, and national audience.



Whittier Home & Museum

Amesbury, Massachusetts
whittierhome.org

The Whittier Home & Museum is the home of poet and abolitionist John Greenleaf Whittier. Built circa 1829, Whittier moved there in 1836 and lived there until he died in 1892. Visitors learn about Whittier's poetry, his work as an abolitionist, and view the very rooms where he wrote "Snowbound" and his other famous works.

Revolutionary Spaces

Boston, Massachusetts
617-720-1713
revolutionaryspaces.org

Revolutionary Spaces is a nonprofit organization that tells the interwoven stories of two of Boston's most iconic sites—the Old State House and Old South Meeting House. Our mission is to bring people together to explore America's struggle to create and sustain a free society. We steward these buildings as gathering spaces for the open exchange of ideas and the continuing practice of democracy, inspiring all who believe in the power of people to govern themselves.



Paul Revere Museum of Discovery and Innovation



Canton, Massachusetts
781-828-1845
paulreveremuseum.org

The Paul Revere Museum of Discovery and Innovation (MoDI) is a combination of history and design thinking - of the American Revolution and STEAM education (Science, Technology, Engineering, Art, and Math). Located in two historic buildings on the spot where Paul Revere opened the USA's first copper rolling mill, the museum celebrates innovation and encourages people to see the world in new ways. Paul Revere was an uncommon figure who helped shape two major revolutions: the American Revolution and the Industrial Revolution. While MoDI doesn't ignore the famous Midnight Ride, it focuses on

Revere's role as a business leader, inventor, visionary, and early STEAM thinker. Enjoyed by visitors of all ages, MoDI offers four floors of exciting, interactive exhibits that challenge visitors to "think like Revere."

Willard House & Clock Museum

Grafton, Massachusetts
508-839-3500
www.willardhouse.org

Founded by Dr. Roger and Imogene Robinson in 1969, and opened to the public in 1971, the museum features world's largest collection of Willard clocks. The collection



is displayed in period room settings in the 1718 Joseph Willard homestead, the 1766 Benjamin Willard Clock Manufactory and three modern galleries, and also includes: more than 90 Willard clocks; Willard family portraits and furnishings; Colonial, Federal and Empire period furniture; antique Oriental rugs; 18th century American and English pewter; Victorian dolls and doll furniture; military and hunting weapons; Nipmuc Nation artifacts; and original documents signed by Thomas Jefferson and James Madison.

Westminster Historical Society



Westminster, Massachusetts
978-874-5569
westminsterhistoricalsociety.org

We are a membership-based organization whose mission is to save and share Westminister's history. Our town is well known for the Westminister Cracker Factory, the longest running cracker bakery in the country, and notables such as Civil War General Nelson Miles and World War II Admiral Frank Fenno. Our collections are focused on Westminister's early Colonial history from 1727, the large chair-making industry which brought about the prevalence of Greek Revival structures in town,

and the engagement of inhabitants in military activities and local events. The Historical Society provides public and school programs and workshops and participates in region-wide events such as the Westminister Cracker Festival and Town-Wide Yard Sale. Its collections numbering 20,000 items will soon be available on-line for examination and research.

Marquee Arts

Ann Arbor, Michigan
734-668-8397
www.marquee-arts.org

Marquee Arts operates as a multidisciplinary cultural institution dedicated to advancing film, performing arts, music, and community centered programming through the historic Michigan Theater and State Theatre. As a mission-driven nonprofit arts organization, Marquee Arts presents a year-round slate of curated cultural experiences.



Lost Railway Museum



Grass Lake, Michigan
517-522-9500
lostrailwaymuseum.org

Imagine the time before paved streets, cars and buses. Village streets bustling with activity and people in the early 1900's of Grass Lake. The electric Interurban railway system is the primary mode of public transportation. More than six railways intersected Jackson County and delivered visitors to and from Ann Arbor, Jackson, Battle Creek and

Lansing. Now, get ready to experience what that time was like at the Lost Railway Museum by taking a ride on the Boland Express. Lost Railway Museum takes 6000 visitors each year on a step back in time experience, with interactive, fun and educational exhibits and displays.

Giants of the Earth Heritage Center

Spring Grove, Minnesota
507-498-5070
giantsoftheearth.org

Giants of the Earth Heritage Center is an educational institution in Spring Grove—the first Norwegian settlement in the state and a historic portal community for many immigrant farming families. Located in the scenic Driftless Region, we explore the area's rich heritage as a deeply rooted, multi-generational immigrant farming community. Our name is inspired by Ole Rolvaag's novel *Giants in the Earth*, which powerfully captures the immigrant experience. Our exhibits, genealogy resources, oral histories, events, and programs connect past and present. We also feature a gift shop highlighting local makers and regional goods, serving as a community anchor and welcoming space for learning, reflection, and celebration.



Polish Cultural Center and Museum



Winona, Minnesota
507-454-3431
polishmuseumwinona.org

The Polish Cultural Center & Museum is 501(c)3 non-profit founded in 1979 by the late Fr. Paul Breza, a Catholic priest of Kashubian heritage. He acquired the offices of Laird-Norton Lumber Co., where Polish immigrants once worked, and transformed the space into one of the largest museums of its kind. Our campus also includes the Morrison Annex, the largest independent Polish gathering hall in Minnesota. Our mission is to connect people to Polish communities and resources so that they may learn about and develop an appreciation of Polish-American and Kashubian heritage and culture in Northern Poland and Minnesota.

Polish-American and Kashubian heritage and culture in Northern

The Stars and Stripes National Museum and Library

Bloomfield, Missouri
573-568-2055
www.nssml.org

The Stars and Stripes National Museum and Library is dedicated to preserving and sharing the legacy of the Stars and Stripes newspaper, a vital voice for American military personnel since the Civil War.



Our mission is to honor the service of veterans and educate the public about the pivotal role of military journalism in documenting history, fostering morale, and connecting service members to home. Our museum houses an extensive collection of Stars and Stripes editions spanning from the Civil War to modern conflicts, alongside military artifacts, photographs, and personal stories from veterans and journalists. Visitors can explore our exhibits, participate in events, and connect with Bloomfield's historical roots. We are committed to providing accessible, educational, and inspiring experiences that honor our nation's military heritage. We welcome visitors to discover the unique history of military journalism and the sacrifices of those who served.

The John Hay Estate at The Fells

Newbury, New Hampshire
603-763-4789
thefells.org

The John Hay Estate at The Fells on Lake Sunapee is one of New England's Finest Early 20th-Century Summer Estates. Discover 83.5 acres of beauty and tranquility; learn the legacy of diplomat and statesman John Milton Hay; tour the 22-room Colonial Revival home; explore the forests, walk the woodland trails; and enjoy the renowned gardens. The Fells is listed on the National Register of Historic Places and is a preservation project of The Garden Conservancy. Our Mission is to welcome people of all ages, making each visit an enriching experience with opportunities to explore and learn from our natural lakeside setting, our renowned historic buildings and gardens, and the historic achievements of three generations of Hay family visionaries.



The Hermitage



Ho-Ho-Kus, New Jersey
201-445-8078
thehermitage.org

The Hermitage is a 14-room Gothic Revival house museum and National Historic Landmark. With stories of industry, intrigue, and reinvention, the house reflects the ever-evolving cultural landscape of the United States. In the time of the Revolutionary War, while home to Theodosia Prevost, George Washington and his troops stayed at the commodious Hermitage. Among the other notable visitors, one was Aaron Burr, who later married Theodosia in the house's dining room. In 1807, the first of four generations of the Rosencrantz family settled in. In 1847, architect William Ranlett transformed the residence into the remarkable Gothic Revival landmark seen today.

Over the decades, the family operated a cotton warp mill, opened a charming tea room, and explored many leisurely pursuits. The museum is interpreted in the Victorian period, inviting visitors to explore the home and lives of the Rosencrantz family through exhibitions of clothing, personal belongings, and everyday ephemera.

Wheelwright Museum of the American Indian

Santa Fe, New Mexico
505-982-4636
wheelwright.org

The Wheelwright Museum of the American Indian Honors Native Voices through Art and is known for its commitment to showcasing the rich traditions of contemporary Native American arts and the study of Native jewelry traditions of the Southwest. From the ancient lapidary tradition to the historic gold filigree work found in Pueblo communities, from traditional Navajo silversmithing to the sleekness of contemporary work, the permanent gallery shows 700 artworks that provide endless wonder and inspiration. Overlooking the Sangre de Cristo mountains, the Wheelwright Museum opened to the public in 1938. The main building is an architectural landmark inspired by the Diné hogan, a traditional dwelling and ceremonial structure.



Cayuga Museum of History & Art

Auburn, New York
315-253-8051
cayugamuseum.org

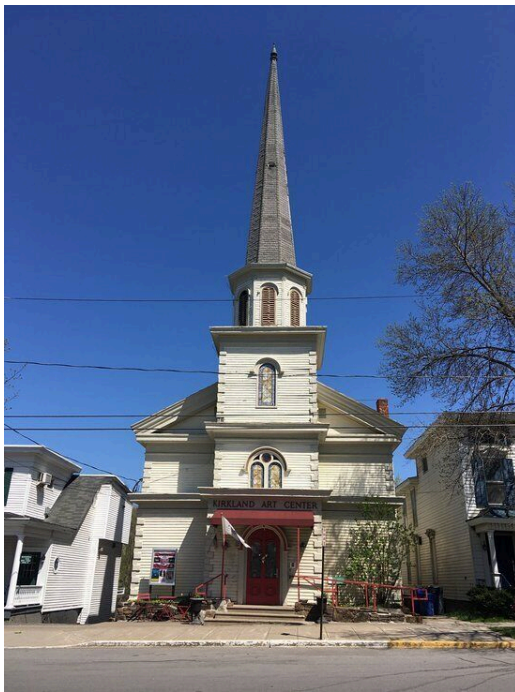
The Cayuga Museum of History & Art engages the community to appreciate local history, promotes the arts, and educates individuals about the invention of sound-on-film through the operation of the Museum, Case Research Laboratory, and Carriage House Theater. Preserving a campus of three distinct historical buildings, the Museum leads an eclectic purpose as the county history museum, the historic birthplace of sound-on-film technology, and a multi-arts performance space. Cayuga Museum serves visitors through onsite and virtual engagement, providing immersive exhibitions, community centered programming, STEAM (Science, Technology, Engineering, Art, Mathematics) activities for school groups, and a space for visitors to consider the interconnection of history, art, and science.



Kirkland Art Center

Clinton, New York
315-853-8871
www.kacny.org

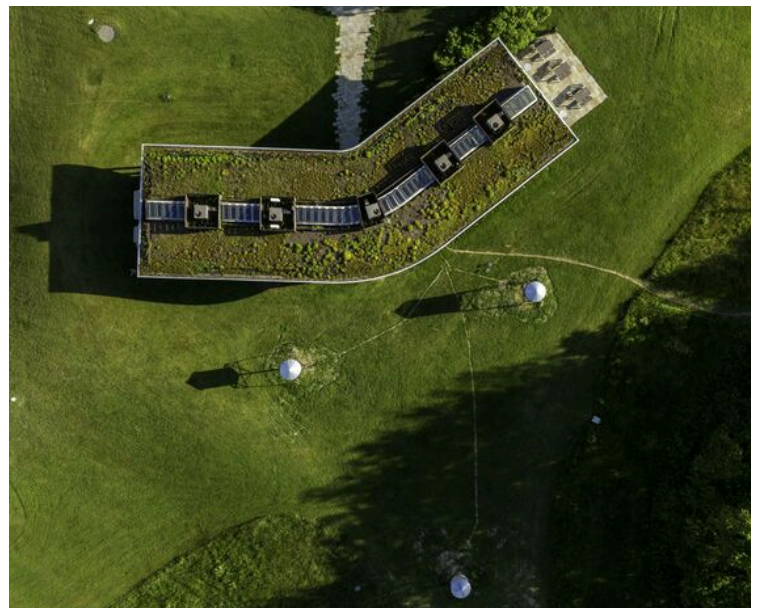
The Kirkland Art Center (KAC) was established in 1960 using the second floor of the town library as a meeting place. From the beginning there were classes, exhibitions, films, concerts, and lectures. The KAC is now an active regional multi-arts center, housed in an old church, barn, and connecting addition located on the village green. Our mission has stayed steadfast over our 60-year history and we are committed to including the rich diversity of voices, experiences and perspectives in all we do. With the help of our community, members, volunteers, funding sources, and guidance from the New York State Council on the Arts, our programming is always evolving as the world around us changes. We welcome people of all ages and abilities to join us in engaging with the arts in our community through classes and workshops, live performances, and exhibitions.



Ghent, New York
518-392-4747
artomi.org

Art Omni

Art Omi is a not-for-profit international arts center on 120 acres in New York's Hudson Valley, featuring a Sculpture & Architecture Park with over 60 large-scale contemporary works across fields and forests, the Newmark Gallery with rotating exhibitions, five distinct residency programs (Architecture, Artists, Dance, Music, and Writers), and arts education programming for all ages. Art Omi believes that exposure to internationally diverse creative voices fosters acceptance, respect, and innovation. Since its founding, Art Omi has hosted more than 2,000 artists from over 100 countries, guided by the principle that artistic expression transcends economic, political, and cultural boundaries. Located in Columbia County approximately 2.5 hours north of New York City.





Museum Village of Old Smith's Clove

Monroe, New York
845-782-8248
www.museumvillage.org

Museum Village is a recreated 19th century village that explores life in the Hudson Valley during the period from 1865-1918. The museum houses an extensive collection of over 36,000 artifacts, hosts a range of events from Living History experiences to regional fairs, and year-round educational programming.

Noble Maritime Collection

Staten Island, New York
718-447-6490
noblemaritime.org

The mission of the Noble Maritime Collection, an art and history museum in Staten Island, New York, is to present exhibitions and programs that celebrate the working waterfront of New York Harbor in the tradition of distinguished artist John A. Noble (1913-1983), and to preserve Robbins Reef Lighthouse and the history of Sailors' Snug Harbor.



Wood County Museum

Bowling Green, Ohio
419-352-0967
woodcountyhistory.org

The Wood County Museum previously operated as the Wood County Home ("Infirmary") from 1869-1971 providing public charity services, primarily housing, for the poor, elderly, physically and mentally disabled. As state laws changed, traditional county-managed public charity buildings transformed into the many social services we know today. When the county home closed in 1971, after 102 years of service, the Wood

County Park Commission, under the advisement of Lyle Fletcher and the Wood County Historical Society, became proprietors of the grounds and buildings. The Wood County Museum opened to the public in 1975. The Museum's main building is fully handicap-accessible and features permanent exhibits on the establishing of county poor houses and local history, along with changing exhibits on larger topics.

Lake Erie Islands Historical Museum



Put-in-Bay, Ohio
419-285-2804
www.leihs.org

The Lake Erie Islands Historical Society Museum has exhibits on island history, the wine making industry, Put-in-Bay's Victorian hotels, the ice industry, the island road races, The Ford Tri-Motor "Tin Goose" airplane, and a collection of historic souvenirs. The Battle of Lake Erie, fought during the War of 1812 took place about 10 miles from Put-in-Bay. The War of 1812 was considered by many to be America's second Revolutionary War.

Tulsa, Oklahoma
539-867-3173
www.greenwoodrising.org

Greenwood Rising

Greenwood Rising, a nonprofit qualified under Section 501(c)(3) of the Internal Revenue Code, is a museum—an award-winning, world-class history center—that tells the story of Tulsa's Historic Greenwood District in a holistic, experiential way. Its approach is narrative-centered.

The mission of Greenwood Rising is to educate people about Tulsa's Historic Greenwood District, the Black Wall Street mindset, and America's ongoing racial challenges. Our vision evokes thought and motivates change in race relations, inspiring work toward social justice and racial reconciliation at home and beyond.



The Historic Grange Estate

Havertown, Pennsylvania
610-446-3958
thegrangeestate.net

In 1682 Henry Lewis purchased land from William Penn and so begins the story of the Historic Grange Estate. The Lewis family moved from Wales to what is now Haverford Township to find religious freedom. Through out the history of the Grange it was sold to many interesting owners. One which is worth noting is John Ross whose father in law owned the estate during the Revolutionary War. Ross was a major contributor to the war effort which afforded him friendships with Washington, Franklin and Lafayette all who visited the Grange. The estate passed from owner to owner until 1974 when it was put up for auction. Haverford Township bought the estate which included 8 out buildings and 9.9 acres and saved it from the wrecking ball. The Friends of the Grange now run the estate and have discovered the importance of the site in the history of the township, state and country.

Westmoreland Historical Society and Historic Hanna's Town

Latrobe, Pennsylvania
724-836-1800
westmorelandhistory.org

The Westmoreland Historical Society (WHS) is the primary steward of the county's rich historical and cultural heritage, preserving and interpreting more than two centuries of regional history that shaped Southwestern Pennsylvania and the early United States. Founded in 1889, WCS connects people to the past through museum collections, archival resources, educational programming, and public events that foster historical understanding, civic pride, and lifelong learning. Central to this mission is Historic Hanna's Town, a nationally significant Revolutionary-era site and the original county seat of Westmoreland County. Established in the 1770s, Hanna's Town served as a political and legal center on the western frontier and was the only county seat burned during the American Revolution. Today, the site operates as an outdoor history museum featuring reconstructed log buildings, archaeological resources, and immersive educational programs.



Charleston Library Society

Charleston, South Carolina
843-723-9912
charlestonlibrarysociety.org

Since its founding in 1748, the Library Society has continued to strengthen the intellectual and cultural fabric of the Lowcountry as a private lending library and comfortable gathering spot for reading, exploration of treasured collections, scholarly research and lively programs on literature, history, world affairs, and music. After 278 years, the Charleston Library Society remains the oldest cultural institution in the South and the second-oldest circulating library in the country. A few valuable discoveries in the Library Society's collections include a manuscript copy of The Fundamental Constitutions of Carolina in John Locke's hand; letters by George Washington, John Marshall, and Alexander Hamilton; a

renowned collection of early American and colonial newspapers; rare maps and nautical charts; and surprising manuscript treasures such as DuBose Heyward's Porgy.

Museum of North Texas History

Wichita Falls, Texas
940-322-7628
mntx.org

Step into the stories that shaped a region. The Museum of North Texas History in Wichita Falls offers a unique look into the people, events, industries, and cultures that have defined North Texas for generations. Whether you're first-time visitor, a lifelong resident, or traveling historian, there's something new to discover each time you walk through our doors.



Museum of Utah



Salt Lake City, Utah
801-538-3101
history.utah.gov/museum

As Utah's first state history museum, the Museum of Utah celebrates our unique history, culture, and art through world class exhibits, programming, and community gathering spaces. The Museum of Utah is an extension of the Utah Historical Society, fostering curiosity about the past, informing the present, and strengthening our shared future.

Fairfield Foundation

Gloucester, Virginia
804-815-4467
fairfieldfoundation.org

Our mission is to promote and involve the public in hands-on archaeology, preservation, and education activities within Virginia's Middle Peninsula and surrounding areas. The Fairfield Foundation is a 501(c)3 not-for-profit organization and has been expanding its public programs, research opportunities, and outreach activities since 2000. The Fairfield Foundation operates five properties in Gloucester County: Fairfield Archaeology Park, Timberneck House at Machicomoco, Edge Hill Texaco (the C.A.P.E.), Rosewell Ruin and Visitor Center, and Walter Reed birthplace.



Your member engagement platform



Digital Membership



SMS / Text Messaging



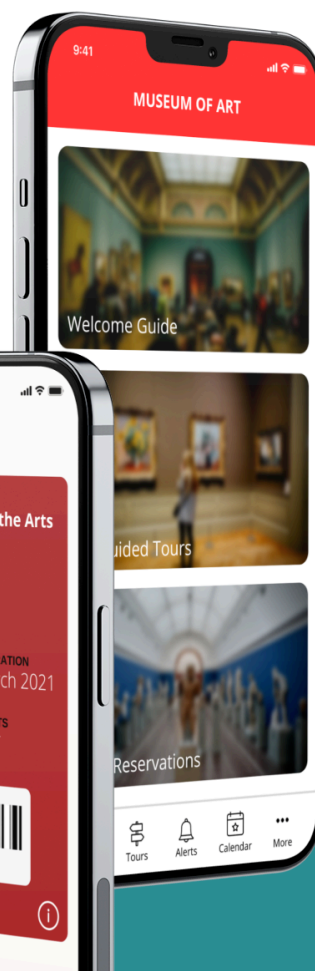
Member Portal



Visitor Engagement



Loyalty & Rewards



Hundreds of museums and cultural organizations leverage Cuseum's solutions to help you drive visitor, member, and patron engagement.

Cuseum's solutions are compatible with leading CRMs & Systems including:



Ready to Learn More? Request A Demo @ cuseum.com

Slow Art Friday Presentations Presented by Asheville Art Museum



Pierre Daura, Hays Creek in the Snow, circa 1935, oil on canvas, 20 1/8 × 26 inches. Gift of Martha R. Daura, 1998.17.02.21. © Estate of Pierre Daura.

Each Friday at 12pm, docents lead virtual, in-depth conversations about a few artworks in the Asheville Art Museum Collection or special exhibitions. The goal is simple: slow down, discover the joy of looking at art, and talk about the experience with others. Topics, artworks, and self-guided questions are posted on the Museum's website in advance for participants, or for those wishing to have a self-guided experience on their own.

View previous presentations: <https://www.ashevilleart.org/event/darkness-to-light-2/>

Fleeting Moments: Amanda Outcalt
Presented by Tephra Institute of Contemporary Art

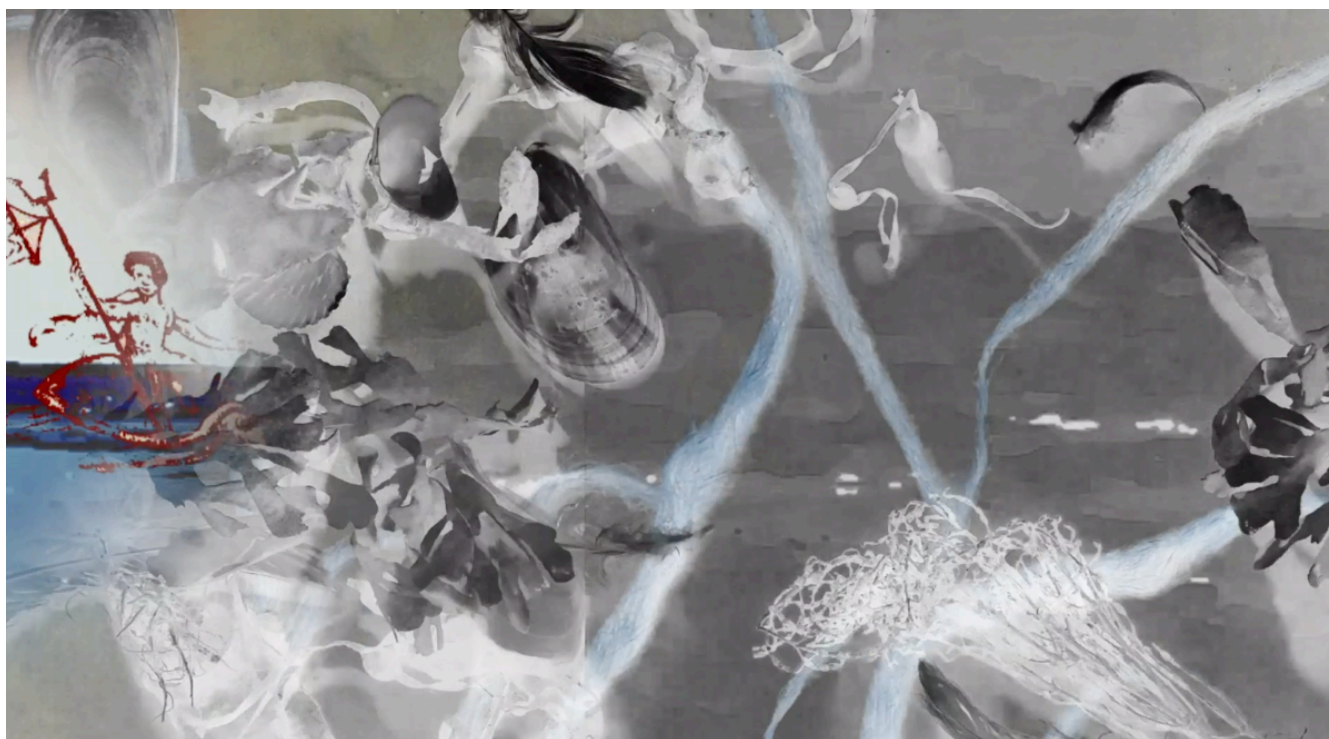


Amanda Outcalt, *Trying to Keep it Together*, 2020.

D.C.-based multi-media artist Amanda Outcalt (b. 1985, Raleigh, North Carolina) explores social and psychological connections to momentary experiences. Outcalt's intensive process of combining intaglio printmaking and the embellishment of works on paper results in a narrative that appears playful at the outset but carries significant weight.

Online viewing room: <https://www.tephraica.org/exhibitions/fleeting-moments>

Ami Zanders: Journeys Through The Atlantic Presented by Bermuda National Gallery



Still from "Journeys Through The Atlantic" by Ami Zanders, 2020. Animation.

Like most of us, Ami Zanders has found herself embracing technology in new ways over the last few months. Confined to her home in Liverpool under lockdown, she wasn't able to access the materials she was used to working within her studio at university, and with no access to a computer, she turned to her phone.

The multimedia artist, best known for her yarn bombing works, soon found herself absorbed in the Stop Motion Studio App. She started playing around with it, creating short clips for fun. This soon led to a newfound fascination with stop motion animation and changed the direction of her final project.

Her explorations into the new medium impressed her lecturer at John Moore University, where Ami is currently completing her MFA, and they swiftly arranged for her to borrow the equipment needed to develop it further. The result is first her standalone project, Journeys Through The Atlantic, an experimental animation video that explores her Bermudian heritage, produced exclusively for the Bermuda National Gallery.

Read the interview and watch "Journeys Through The Atlantic" on Stories, the BNG blog: <https://www.bermudanationalgallery.com/journeys-through-the-atlantic/>



The *only* museum search tool!

Discover more than 1600 museums across the US
... listed all in one place!

- ✓ Searchable by city or state
- ✓ Editor-selected featured exhibitions
- ✓ Links to each museum's own website for details
- ✓ *Art Things Considered* art-travel blog

Planning a trip?

Wherever you are or wherever you go in the US,
[ArtGeek](#) provides descriptive listings and links to

- art museums
- historic houses & artists' studios
- sculpture & botanical gardens

ArtGeek is good news for art-lovers who travel!

[ArtGeek](#) is good news for art museums and gardens, too!

Click [here](#) to learn if your institution is listed.

If it's not but should be, please [contact](#) us.

New and Rejoining members 12/15/2025 through 3/14/2026

State, City, Museum, Phone

ALABAMA, Northport, Kentuck Museum, 205-758-1257
CALIFORNIA, Sebastopol, Sebastopol Center for the Arts, 707-829-4797
FLORIDA, Lake City, Gateway Art Gallery | Art League of North Florida, Inc., 386-752-5229
FLORIDA, Winter Park, Rollins Museum of Art, 407-646-2526
KANSAS, Hays, Hays Arts Council, 785-625-7522
KENTUCKY, Maysville, Kentucky Gateway Museum Center, 606-564-5865
MAINE, Ellsworth, Woodlawn Museum, 207-667-8671
MAINE, Portland, Victoria Mansion, 207-772-4841
MASSACHUSETTS, Amesbury, Whittier Home & Museum,
MASSACHUSETTS, Boston, Revolutionary Spaces, 617-720-1713
MASSACHUSETTS, Canton, Paul Revere Museum of Discovery and Innovation, 781-828-1845
MASSACHUSETTS, Grafton, Willard House & Clock Museum, 508-839-3500
MASSACHUSETTS, Westminster, Westminster Historical Society, 978-874-5569
MICHIGAN, Ann Arbor, Marquee Arts, 734-668-8397
MICHIGAN, Grass Lake, Lost Railway Museum, 517-522-9500
MINNESOTA, Spring Grove, Giants of the Earth Heritage Center, 507-498-5070
MINNESOTA, Winona, Polish Cultural Center and Museum, 507-454-3431
MISSOURI, Bloomfield, The Stars and Stripes National Museum and Library, 573-568-2055
NEW HAMPSHIRE, Newbury, The John Hay Estate at The Fells, 603-763-4789
NEW JERSEY, Ho-Ho-Kus, The Hermitage, 201-445-8078
NEW MEXICO, Santa Fe, Wheelwright Museum of the American Indian, 505-982-4636
NEW YORK, Auburn, Cayuga Museum of History & Art, 315-253-8051
NEW YORK, Clinton, Kirkland Art Center, 315-853-8871
NEW YORK, Ghent, Art Omni, 518-392-4747
NEW YORK, Monroe, Museum Village of Old Smith's Clove, 845-782-8248
NEW YORK, Staten Island, Noble Maritime Collection, 718-447-6490
OHIO, Bowling Green, Wood County Museum, 419-352-0967
OHIO, Put-in-Bay, Lake Erie Islands Historical Museum, 419-285-2804
OKLAHOMA, Tulsa, Greenwood Rising, 539-867-3173
PENNSYLVANIA, Havertown, The Historic Grange Estate, 610-446-3958
PENNSYLVANIA, Latrobe, Westmoreland Historical Society and Historic Hanna's Town, 724-836-1800
SOUTH CAROLINA, Charleston, Charleston Library Society, 843-723-9912
TEXAS, Austin, Texas Military Forces Museum, 512-782-5659
TEXAS, La Grange, Texas Quilt Museum, 979-968-3104
TEXAS, Wichita Falls, Museum of North Texas History, 940-322-7628
UTAH, Salt Lake City, Museum of Utah, 801-538-3101
VIRGINIA, Gloucester, Fairfield Foundation, 804-815-4467

Why Use a Portal?

People use portals **to get links** to search, videos, user posts, purchases, history, resale items...



WIKIPEDIA

TRIPinfo.com is a **portal used for logistics and details** that are needed when planning Leisure Group Trips.



Common Denominators	Popular Portals	TRIPinfo.com
Pioneer	Some of the first commercial websites launched in 1996	One of the first commercial travel websites – launched in 1996
Purpose	Trusted website, loyal audiences	Trusted website, loyal audience
Design	Simple, clean, and largely unchanged since launch	Simple, clean, and largely unchanged since launch
Influence	Among the most popular global websites...hundreds of millions, even billions of monthly visits	Most popular website in its category...consistently 40,000-50,000 monthly visits
Pages per Visit, Time on Site	Higher than non-portal sites	Higher than non-portal sites
Bounce Rate	Lower than non-portal sites	Lower than non-portal sites
Privacy		User privacy protected. Acceptable Ads Certified: Strict global standards for unobtrusive, self-selected, tasteful ads



ET CETERA (CONTINUED)...

Other updates

State, City, Museum, Change

CALIFORNIA, Fullerton, Fullerton Arboretum, Update, Name change to Arboretum and Botanical Garden at Cal State Fullerton

CALIFORNIA, Hayward, Hayward Toy Museum, Remove, Not renewing this year

CALIFORNIA, McClellan, Aerospace Museum of California, Update, Add restriction **

CALIFORNIA, Woodland, California Agriculture Museum, Remove, Temporarily closed while moving locations

DELAWARE, Wilmington, Hagley Museum and Library***, Remove, Lost contact

FLORIDA, Leesburg, Leesburg Center for the Arts, Remove, Lost contact

FLORIDA, Punta Gorda, Peace River Botanical and Sculpture Gardens, Update, Add *

KENTUCKY, Bowling Green, Historic Railpark & Train Museum, Remove, Lost contact

MASSACHUSETTS, East Sandwich, Nye Museum, Update, City name update, remove 'East'

MISSOURI, Springfield, Springfield Art Museum, Remove, Temporarily closed while relocating

MONTANA, Kalispell, Hockaday Museum of Art, Update, Name change to Glacier Art Museum

NEW HAMPSHIRE, Portsmouth, Moffatt-Ladd House & Garden, Remove, No longer participating

NORTH CAROLINA, Cherokee, Museum of the Cherokee Indian, Update, Name change to Museum of the Cherokee People

PENNSYLVANIA, Philadelphia, National Constitution Center**, Remove, No longer has traditional membership program

TEXAS, Dallas, Dallas Holocaust and Human Rights Museum, Remove, Lost contact

*NARM privileges may be restricted for concerts/lectures/special exhibitions and ticketed events.

**NARM privileges do not extend to members with a home institution within a 15 mile radius.

***NARM privileges do not extend to members with a home institution within a 15 mile radius and may be restricted for concerts/lectures/special exhibitions and ticketed events.

Open the Door to a World of Discovery

NARM Gives You the Freedom to Explore Museums and Cultural Institutions Across North America



NARM is perhaps the largest and most widely recognized reciprocal program, often considered the gold standard for museum lovers. It boasts an extensive network of over 1,300 museums, gardens, historical societies, and more across North America. If your home museum's membership card has the small NARM sticker or logo, you're in for a treat.

Wonderful Museums

wonderfulmuseums.com



This is a great program and a wonderful idea. It opens up a world of art to interested folks. We take the NARM affiliation as an indication of merit and we have yet to be disappointed by what we have found in these great museums.

A Member of the Albright Knox Art Museum

Buffalo, New York

